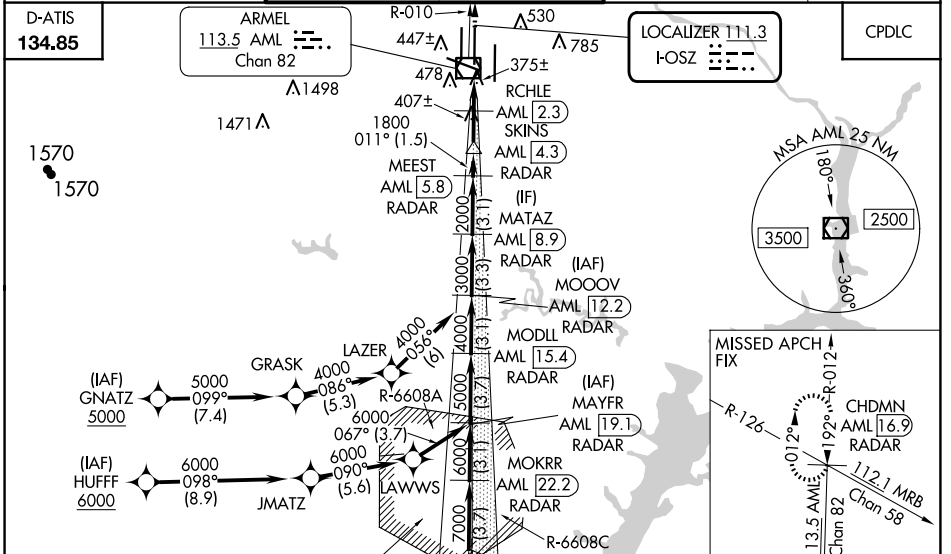


LOC I-OSZ 111.3	APP CRS 011°	Rwy ldg 11500
		TDZE 286
		Apt Elev 312

ILS or LOC RWY 1C

WASHINGTON DULLES INTL (IAD)

RNP APCH-GPS. From GNATZ or HUFFF.		MALS R 	MISSED APPROACH: Climb to 4000 on AML VOR/DME R-010 to CHDMN/AML 16.9 DME/RADAR and hold, continue climb-in-hold to 4000.	
DME or RADAR required. DME required for LOC only. RADAR required for procedure entry at MUDDO.				
<p>∇ Simultaneous approach authorized. For inop ALS, increase S-LOC Cats C/D visibility to RVR 5500. DME from AML VOR/DME. DME use requires simultaneous reception of I-OSZ and AML DME.</p> <p>⚠</p>				
POTOMAC APP CON 120.45 306.925 (241°-330°) 128.525 306.925 (091°-240°) 126.1 338.25 (331°-090°)		DULLES TOWER 120.1 317.8 (Rwy 1R/19L) 120.25 348.6 (Rwy 1C/19C) 134.425 348.6 (Rwys 1L/19R and 12/30)	GND CON 121.9 317.8 (EAST) 121.625 348.6 (WEST)	CLNC DEL 135.7 317.8



ELEV 312		D		TDZE 286	
TDZ/CL Rwys 1C, 1L, 1R, 12, 19C and 19R REIL Rwy 30 HIRL all Rwys					
MUDDO AML 30.8 RADAR 9000	MOKRR AML 22.2 RADAR	MODLL AML 15.4 RADAR	MATAZ AML 8.9 RADAR	4000 AML R-010	CHDMN AML 16.9
9000	8000	7000	6000	5000	4000
GS 3.00° TCH 54	011°				
VGSI and ILS glidepath not coincident (VGSI Angle 3.00/TCH 70).					
4.9 NM	3.7 NM	3.1 NM	3.1 NM	3.1 NM	1.5 NM
CATEGORY A		CATEGORY B		CATEGORY C	
S-ILS 1C 486/18 200 (200-½)					
S-LOC 1C 640/24 354 (400-½)		640/30 354 (400-¾)			
CIRCLING 940-1 628 (700-1)		940-1¼ 628 (700-1¾)		1180-2¾ 868 (900-2¾)	

NE-3, 20 FEB 2025 to 20 MAR 2025

NE-3, 20 FEB 2025 to 20 MAR 2025