

# JDUBB FOUR DEPARTURE (RNAV)

D-ATIS  
134.85  
CLNC DEL  
135.7 317.8  
CPDLC  
GND CON  
121.9 317.8 (EAST)  
121.625 348.6 (WEST)  
DULLES TOWER  
120.1 317.8 (Rwy 1R/19L)  
120.25 348.6 (Rwy 1C/19C)  
134.425 348.6 (Rwys 1L/19R, 12/30)  
POTOMAC DEP CON  
126.65 350.2

**TOP ALTITUDE:  
3000**



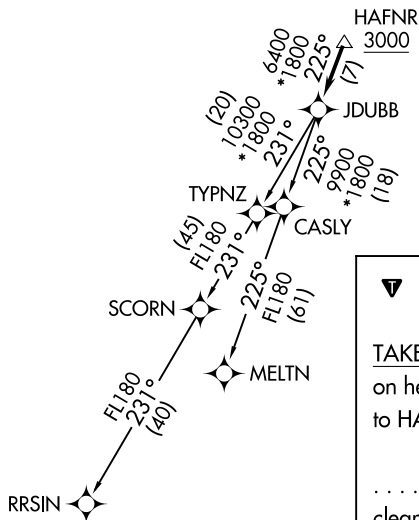
### TAKEOFF MINIMUMS:

Rwys 1L/C/R, 19L/C/R, 30:  
Standard with minimum climb  
of 500' per NM to 820.

- NOTE: RNAV 1.
- NOTE: RADAR required.
- NOTE: DME/DME/IRU or GPS required.
- NOTE: Turbo-jets only.

NE-3, 20 FEB 2025 to 20 MAR 2025

NE-3, 20 FEB 2025 to 20 MAR 2025



NOTE: Chart not to scale.

### ▼ DEPARTURE ROUTE DESCRIPTION

TAKEOFF RUNWAY 1L/C/R, 19L/C/R, 30: Climb on heading assigned by ATC, expect RADAR vectors to HAFNR, then on track 225° to JDUBB, thence. . . .  
 . . . on assigned transition. Maintain 3000. Expect clearance to filed altitude within 10 minutes after departure.

MELTN TRANSITION (JDUBB4.MELTN)  
RRSIN TRANSITION (JDUBB4.RRSIN)