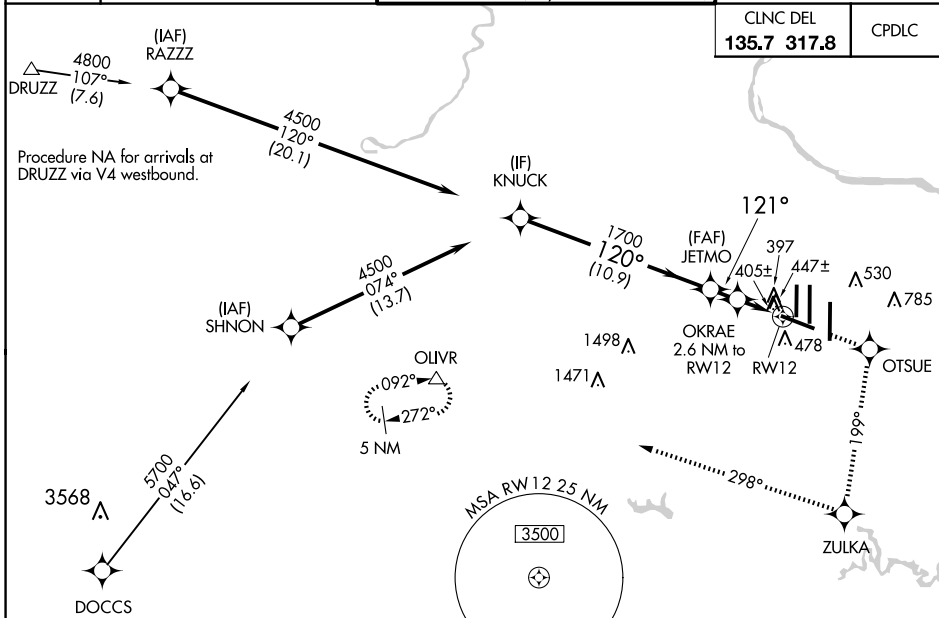


WAAS CH <b>86310</b> <b>W12A</b>	APP CRS <b>121°</b>	Rwy Idg <b>10501</b> TDZE <b>310</b> Apt Elev <b>312</b>
--	------------------------	--

# RNAV (GPS) RWY 12

## WASHINGTON DULLES INTL (IAD)

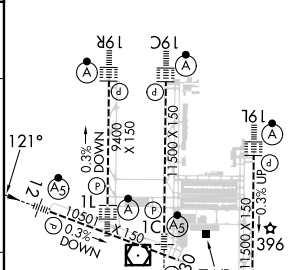
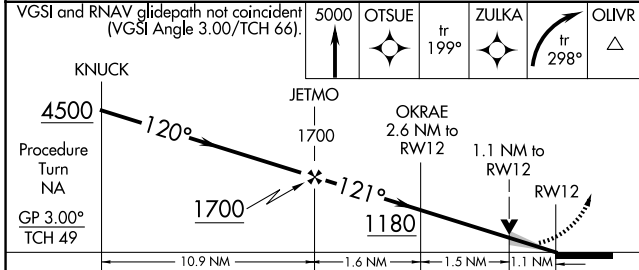
RNP APCH - GPS.		MALSR	MISSED APPROACH: Climb to 5000 direct OTSUE and on track 199° to ZULKA and right turn on track 298° to OLIVR and hold.
<p>▼ For inop ALS, increase LNAV Cats C/D visibility to RVR 6000.</p> <p>▲ For uncompensated Baro-VNAV systems, LNAV/VNAV NA below -15°C or above 48°C.</p>			
D-ATIS <b>134.85</b>	POTOMAC APP CON <b>120.45 306.925</b> (241°-330°) <b>128.525 306.925</b> (091°-240°) <b>126.1 338.25</b> (331°-090°)	DULLES TOWER <b>120.1 317.8</b> (Rwy 1R/19L) <b>120.25 348.6</b> (Rwy 1C/19C) <b>134.425 348.6</b> (Rwys 1L/19R and 12/30)	GND CON <b>121.9 317.8</b> (EAST) <b>121.625 348.6</b> (WEST)



NE-3, 20 FEB 2025 to 20 MAR 2025

NE-3, 20 FEB 2025 to 20 MAR 2025

ELEV 312	<b>D</b>	TDZE 310
----------	----------	----------



CATEGORY	A	B	C	D
LPV DA		510/18	200 (200-½)	
LNAV/VNAV DA		737/50	427 (500-1)	
LNAV MDA	720/24	410 (500-½)	720/40	410 (500-¾)
CIRCLING	940-1	628 (700-1)	940-1¾ 628 (700-1¾)	1180-2¾ 868 (900-2¾)

TDZ/CL Rwys 1C, 1L, 1R, 12, 19C and 19R
REL Rwy 30
HIRL all Rwys