

APP CRS	Rwy Idg	9400
011°	TDZE	296
	Apt Elev	312

RNAV (RNP) Z RWY 1L

WASHINGTON DULLES INTL (IAD)

RNP AR APCH - GPS.

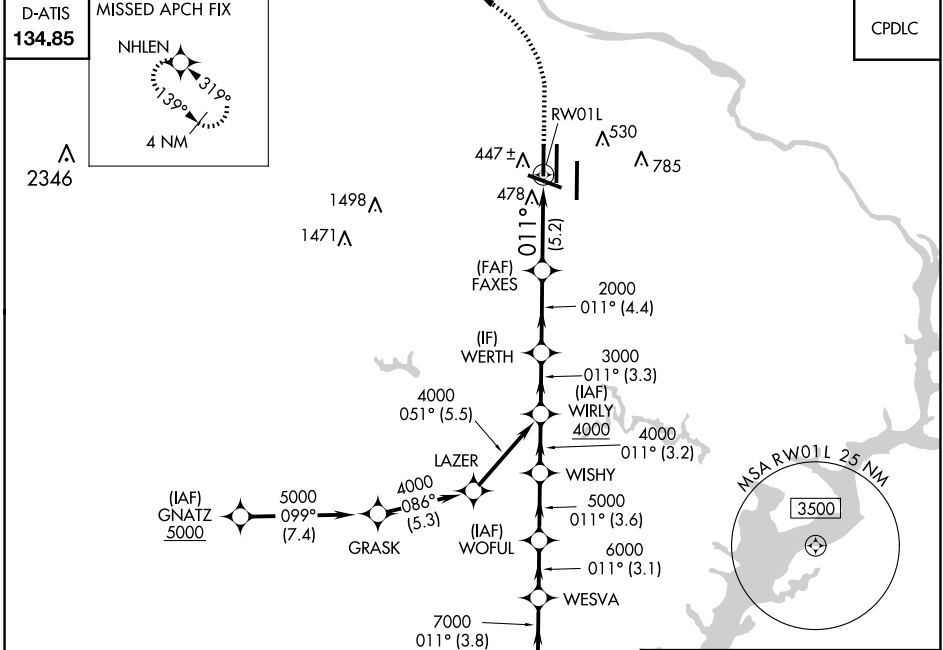
ALSF-2



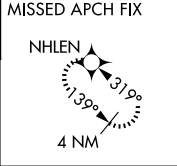
MISSED APPROACH: Climb to 800 then climbing left turn to 3000 direct NHLEN and hold.

▼ For uncompensated Baro-VNAV systems, procedure NA below -13°C or above 54°C. Simultaneous approach authorized. For inop ALS, increase RNP 0.11 all Cats visibility to RVR 4500 and RNP 0.30 all Cats visibility to RVR 6000.

POTOMAC APP CON 120.45 306.925 (241°-330°) 128.525 306.925 (091°-240°) 126.1 338.25 (331°-090°)	DULLES TOWER 120.1 317.8 (Rwy 1R/19L) 120.25 348.6 (Rwy 1C/19C) 134.425 348.6 (Rwys 1L/19R and 12/30)	GND CON 121.9 317.8 (EAST) 121.625 348.6 (WEST)	CLNC DEL 135.7 317.8
---	---	---	--------------------------------



D-ATIS
134.85



CPDLC

NE-3, 20 FEB 2025 to 20 MAR 2025

NE-3, 20 FEB 2025 to 20 MAR 2025

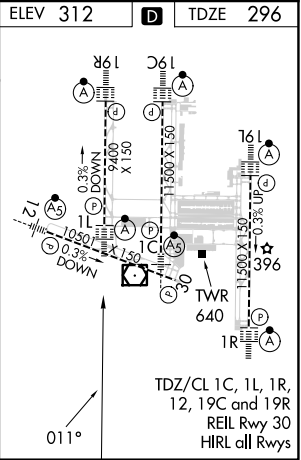
ELEV 312	D	TDZE 296
----------	----------	----------

VGSI and RNAV glidepath not coincident (VGSI Angle 3.00/TCH 70).

WABER	WESVA	WOFUL	WIRLY	WERTH	FAXES	RW01L
8000	7000	6000	5000	4000	3000	2000
GP 3.00°						
TCH 55						
	3.8 NM	3.1 NM	3.6 NM	3.2 NM	3.3 NM	4.4 NM

CATEGORY	A	B	C	D
RNP 0.11 DA		572/24	276 (300-½)	
RNP 0.30 DA		710/40	414 (400-¾)	

AUTHORIZATION REQUIRED



TDZ/CL 1C, 1L, 1R,
12, 19C and 19R
REIL Rwy 30
HIRL all Rwys