

APP CRS	Rwy Idg	<b>11500</b>
<b>011°</b>	TDZE	<b>312</b>
	Apt Elev	<b>312</b>

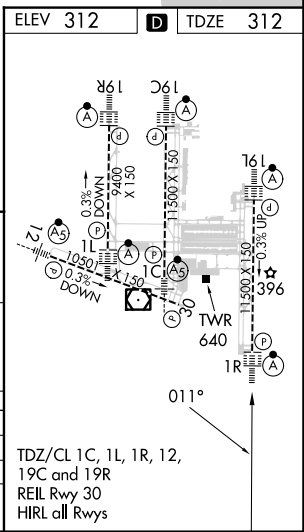
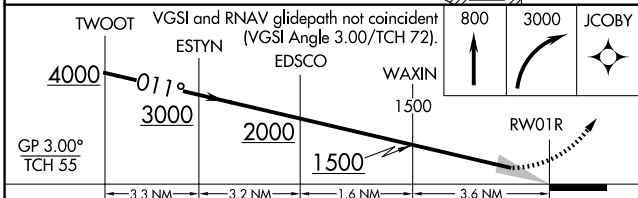
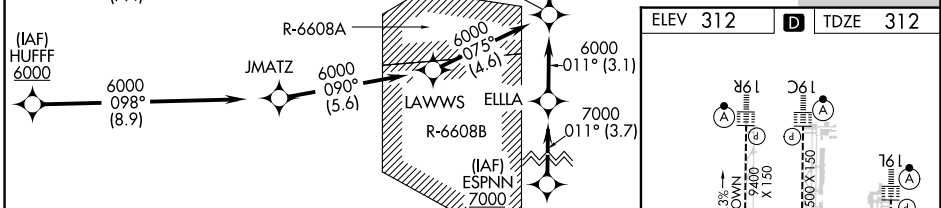
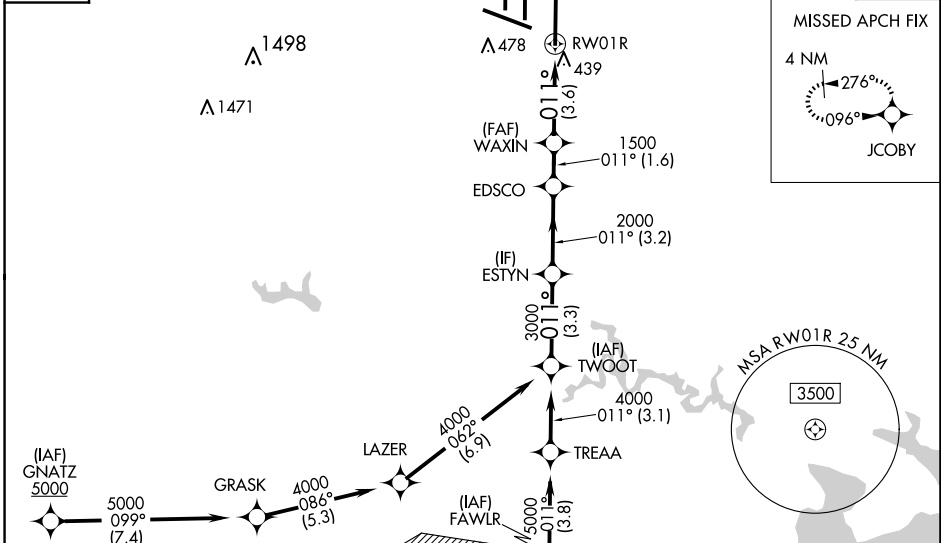
# RNAV (RNP) Z RWY 1R

WASHINGTON DULLES INTL (IAD)

RNP AR APCH - GPS.	ALSIF-2	MISSED APPROACH: Climb to 800 then climbing right turn to 3000 direct JCOBY and hold.
<p>▼ For uncompensated Baro-VNAV systems, procedure NA below -13°C or above 54°C. For inop ALS, increase RNP 0.11 all Cats visibility to RVR 4500. Simultaneous approach authorized.</p>		

POTOMAC APP CON	DULLES TOWER	GND CON	CLNC DEL
<b>120.45 306.925</b> (241°-330°)	<b>120.1 317.8</b> (Rwy 1R/19L)	<b>121.9 317.8</b> (EAST)	<b>135.7 317.8</b>
<b>128.525 306.925</b> (091°-240°)	<b>120.25 348.6</b> (Rwy 1C/19C)	<b>121.625 348.6</b> (WEST)	
<b>126.1 338.25</b> (331°-090°)	<b>134.425 348.6</b> (Rwys 1L/19R and 12/30)		

D-ATIS	CPDLC
<b>134.85</b>	



CATEGORY	A	B	C	D
RNP 0.11 DA		625/24	313 (400-½)	
RNP 0.30 DA		770/45	458 (500-¾)	

**AUTHORIZATION REQUIRED**

TDZ/CL 1C, 1L, 1R, 12, 19C and 19R  
REIL Rwy 30  
HIRL all Rwys

NE-3, 20 FEB 2025 to 20 MAR 2025

NE-3, 20 FEB 2025 to 20 MAR 2025