

APP CRS 301°	Rwy Idg TDZE 288 Apt Elev 312
------------------------	---

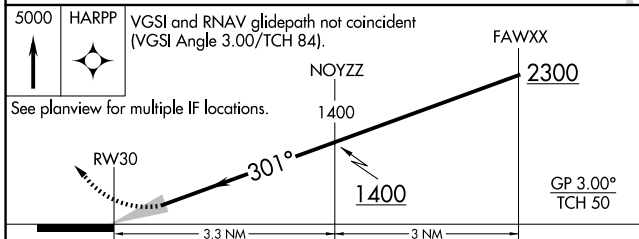
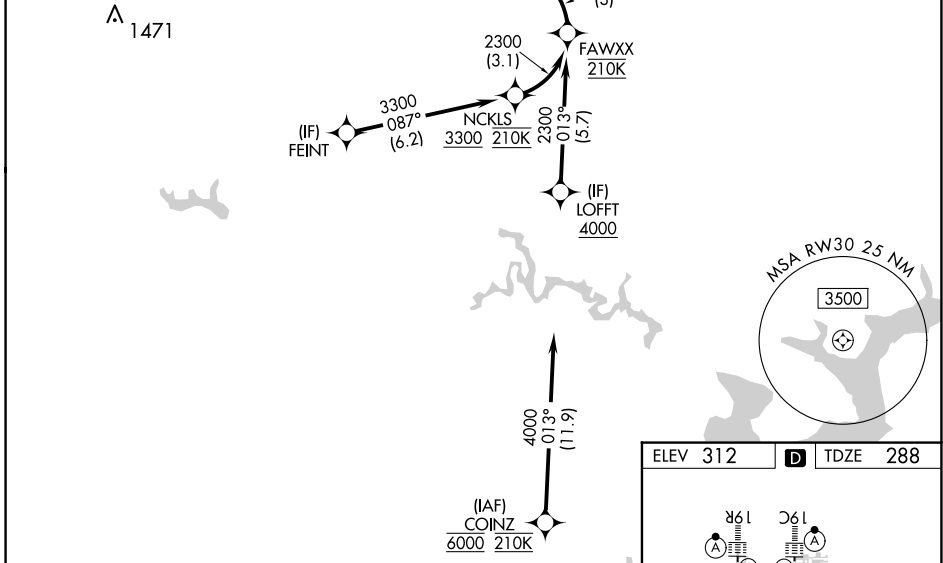
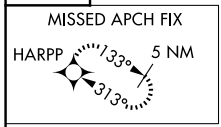
RNAV (RNP) Z RWY 30

WASHINGTON DULLES INTL (IAD)

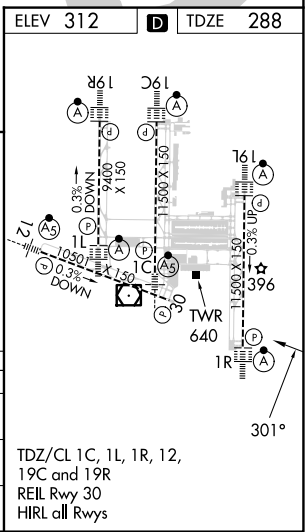
RNP AR APCH - GPS.	For uncompensated Baro-VNAV systems, procedure NA below -13°C or above 54°C.	MISSED APPROACH: Climb to 5000 direct HARPP and hold.
--------------------	--	---

POTOMAC APP CON 120.45 306.925 (241°-330°) 128.525 306.925 (091°-240°) 126.1 338.25 (331°-090°)	DULLES TOWER 120.1 317.8 (Rwy 1R/19L) 120.25 348.6 (Rwy 1C/19C) 134.425 348.6 (Rwys 1L/19R and 12/30)	GND CON 121.9 317.8 (EAST) 121.625 348.6 (WEST)	CLNC DEL 135.7 317.8
---	---	---	--------------------------------

D-ATIS 134.85	CPDLC
-------------------------	-------



5000 HARPP	VGSi and RNAV glidepath not coincident (VGSi Angle 3.00/TCH 84).			
See planview for multiple IF locations.	FAWXX 2300			
	A	B	C	D
RNP 0.11 DA	750-1 ³ / ₈		462 (500-1 ³ / ₈)	
RNP 0.30 DA	808-1 ³ / ₈		520 (500-1 ³ / ₈)	



AUTHORIZATION REQUIRED

NE-3, 20 FEB 2025 to 20 MAR 2025

NE-3, 20 FEB 2025 to 20 MAR 2025