

WAAS CH 58105 W19A	APP CRS 191°	Rwy ldg 11500 TDZE 302 Apt Elev 312
--	------------------------	--

RNAV (GPS) Y RWY 19L

WASHINGTON DULLES INTL (IAD)

RNP APCH - GPS.

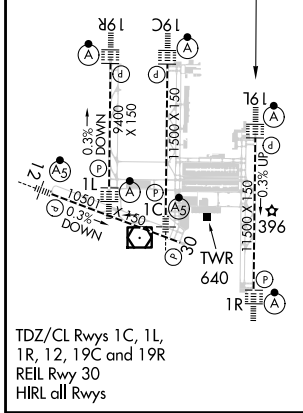
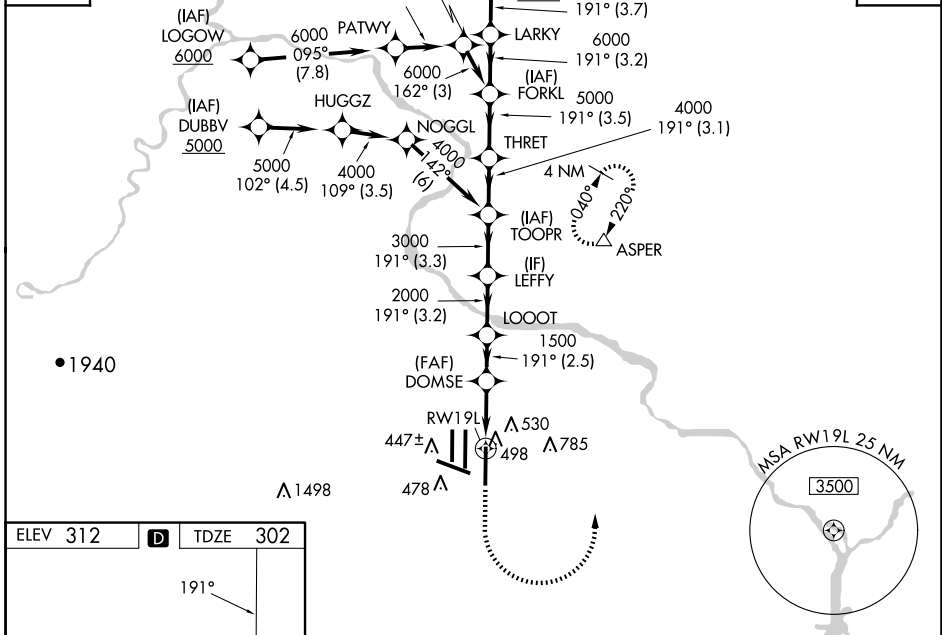
▽ Simultaneous approach authorized. LNAV procedure NA during simultaneous operations.
▲ For uncompensated Baro-VNAV systems, procedure NA below -13°C or above 54°C.
 Use of FD or AP required during simultaneous operations.
 *RVR 1800 authorized with use of FD or AP or HUD to DA.

ALSF-2

MISSED APPROACH: Climb to 800 then climbing left turn to 3000 direct ASPER and hold.

POTOMAC APP CON 120.45 306.925 (241°-330°) 128.525 306.925 (091°-240°) 126.1 338.25 (331°-090°)	DULLES TOWER 120.1 317.8 (Rwys 1R/19L) 120.25 348.6 (Rwys 1C/19C) 134.425 348.6 (Rwys 1L/19R and 12/30)	GND CON 121.9 317.8 (EAST) 121.625 348.6 (WEST)	CLNC DEL 135.7 317.8
---	---	---	--------------------------------

D-ATIS
134.85



800	3000	ASPER	VGSi and RNAV glidepaths not coincident (VGSi Angle 3.00/TCH 75).			
		DOMSE	THRET	FORKL	LARKY	LEMUI
		1.2 NM 1500	TOOPR	5000	6000	6000
		1.2 NM 1500	LOOOT	2000	3000	4000
		1.2 NM 1500	LEFFY	3000	4000	5000
		1.2 NM 1500	THRET	5000	6000	6000
		1.2 NM 1500	LOOOT	2000	3000	4000
		1.2 NM 1500	LEFFY	3000	4000	5000
		1.2 NM 1500	TOOPR	4000	5000	6000
		1.2 NM 1500	THRET	5000	6000	6000
		1.2 NM 1500	LOOOT	2000	3000	4000
		1.2 NM 1500	LEFFY	3000	4000	5000
		1.2 NM 1500	TOOPR	4000	5000	6000
		1.2 NM 1500	THRET	5000	6000	6000
		1.2 NM 1500	LOOOT	2000	3000	4000
		1.2 NM 1500	LEFFY	3000	4000	5000
		1.2 NM 1500	TOOPR	4000	5000	6000
		1.2 NM 1500	THRET	5000	6000	6000
		1.2 NM 1500	LOOOT	2000	3000	4000
		1.2 NM 1500	LEFFY	3000	4000	5000
		1.2 NM 1500	TOOPR	4000	5000	6000
		1.2 NM 1500	THRET	5000	6000	6000
		1.2 NM 1500	LOOOT	2000	3000	4000
		1.2 NM 1500	LEFFY	3000	4000	5000
		1.2 NM 1500	TOOPR	4000	5000	6000
		1.2 NM 1500	THRET	5000	6000	6000
		1.2 NM 1500	LOOOT	2000	3000	4000
		1.2 NM 1500	LEFFY	3000	4000	5000
		1.2 NM 1500	TOOPR	4000	5000	6000
		1.2 NM 1500	THRET	5000	6000	6000
		1.2 NM 1500	LOOOT	2000	3000	4000
		1.2 NM 1500	LEFFY	3000	4000	5000
		1.2 NM 1500	TOOPR	4000	5000	6000
		1.2 NM 1500	THRET	5000	6000	6000
		1.2 NM 1500	LOOOT	2000	3000	4000
		1.2 NM 1500	LEFFY	3000	4000	5000
		1.2 NM 1500	TOOPR	4000	5000	6000
		1.2 NM 1500	THRET	5000	6000	6000
		1.2 NM 1500	LOOOT	2000	3000	4000
		1.2 NM 1500	LEFFY	3000	4000	5000
		1.2 NM 1500	TOOPR	4000	5000	6000
		1.2 NM 1500	THRET	5000	6000	6000
		1.2 NM 1500	LOOOT	2000	3000	4000
		1.2 NM 1500	LEFFY	3000	4000	5000
		1.2 NM 1500	TOOPR	4000	5000	6000
		1.2 NM 1500	THRET	5000	6000	6000
		1.2 NM 1500	LOOOT	2000	3000	4000
		1.2 NM 1500	LEFFY	3000	4000	5000
		1.2 NM 1500	TOOPR	4000	5000	6000
		1.2 NM 1500	THRET	5000	6000	6000
		1.2 NM 1500	LOOOT	2000	3000	4000
		1.2 NM 1500	LEFFY	3000	4000	5000
		1.2 NM 1500	TOOPR	4000	5000	6000
		1.2 NM 1500	THRET	5000	6000	6000
		1.2 NM 1500	LOOOT	2000	3000	4000
		1.2 NM 1500	LEFFY	3000	4000	5000
		1.2 NM 1500	TOOPR	4000	5000	6000
		1.2 NM 1500	THRET	5000	6000	6000
		1.2 NM 1500	LOOOT	2000	3000	4000
		1.2 NM 1500	LEFFY	3000	4000	5000
		1.2 NM 1500	TOOPR	4000	5000	6000
		1.2 NM 1500	THRET	5000	6000	6000
		1.2 NM 1500	LOOOT	2000	3000	4000
		1.2 NM 1500	LEFFY	3000	4000	5000
		1.2 NM 1500	TOOPR	4000	5000	6000
		1.2 NM 1500	THRET	5000	6000	6000
		1.2 NM 1500	LOOOT	2000	3000	4000
		1.2 NM 1500	LEFFY	3000	4000	5000
		1.2 NM 1500	TOOPR	4000	5000	6000
		1.2 NM 1500	THRET	5000	6000	6000
		1.2 NM 1500	LOOOT	2000	3000	4000
		1.2 NM 1500	LEFFY	3000	4000	5000
		1.2 NM 1500	TOOPR	4000	5000	6000
		1.2 NM 1500	THRET	5000	6000	6000
		1.2 NM 1500	LOOOT	2000	3000	4000
		1.2 NM 1500	LEFFY	3000	4000	5000
		1.2 NM 1500	TOOPR	4000	5000	6000
		1.2 NM 1500	THRET	5000	6000	6000
		1.2 NM 1500	LOOOT	2000	3000	4000
		1.2 NM 1500	LEFFY	3000	4000	5000
		1.2 NM 1500	TOOPR	4000	5000	6000
		1.2 NM 1500	THRET	5000	6000	6000
		1.2 NM 1500	LOOOT	2000	3000	4000
		1.2 NM 1500	LEFFY	3000	4000	5000
		1.2 NM 1500	TOOPR	4000	5000	6000
		1.2 NM 1500	THRET	5000	6000	6000
		1.2 NM 1500	LOOOT	2000	3000	4000
		1.2 NM 1500	LEFFY	3000	4000	5000
		1.2 NM 1500	TOOPR	4000	5000	6000
		1.2 NM 1500	THRET	5000	6000	6000
		1.2 NM 1500	LOOOT	2000	3000	4000
		1.2 NM 1500	LEFFY	3000	4000	5000
		1.2 NM 1500	TOOPR	4000	5000	6000
		1.2 NM 1500	THRET	5000	6000	6000
		1.2 NM 1500	LOOOT	2000	3000	4000
		1.2 NM 1500	LEFFY	3000	4000	5000
		1.2 NM 1500	TOOPR	4000	5000	6000
		1.2 NM 1500	THRET	5000	6000	6000
		1.2 NM 1500	LOOOT	2000	3000	4000
		1.2 NM 1500	LEFFY	3000	4000	5000
		1.2 NM 1500	TOOPR	4000	5000	6000
		1.2 NM 1500	THRET	5000	6000	6000
		1.2 NM 1500	LOOOT	2000	3000	4000
		1.2 NM 1500	LEFFY	3000	4000	5000
		1.2 NM 1500	TOOPR	4000	5000	6000
		1.2 NM 1500	THRET	5000	6000	6000
		1.2 NM 1500	LOOOT	2000	3000	4000
		1.2 NM 1500	LEFFY	3000	4000	5000
		1.2 NM 1500	TOOPR	4000	5000	6000
		1.2 NM 1500	THRET	5000	6000	6000
		1.2 NM 1500	LOOOT	2000	3000	4000
		1.2 NM 1500	LEFFY	3000	4000	5000
		1.2 NM 1500	TOOPR	4000	5000	6000
		1.2 NM 1500	THRET	5000	6000	6000
		1.2 NM 1500	LOOOT	2000	3000	4000
		1.2 NM 1500	LEFFY	3000	4000	5000
		1.2 NM 1500	TOOPR	4000	5000	6000
		1.2 NM 1500	THRET	5000	6000	6000
		1.2 NM 1500	LOOOT	2000	3000	4000
		1.2 NM 1500	LEFFY	3000	4000	5000
		1.2 NM 1500	TOOPR	4000	5000	6000
		1.2 NM 1500	THRET	5000	6000	6000
		1.2 NM 1500	LOOOT	2000	3000	4000
		1.2 NM 1500	LEFFY	3000	4000	5000
		1.2 NM 1500	TOOPR	4000	5000	6000
		1.2 NM 1500	THRET	5000	6000	6000
		1.2 NM 1500	LOOOT	2000	3000	4000
		1.2 NM 1500	LEFFY	3000	4000	5000
		1.2 NM 1500	TOOPR	4000	5000	6000
		1.2 NM 1500	THRET	5000	6000	6000
		1.2 NM 1500	LOOOT	2000	3000	4000
		1.2 NM 1500	LEFFY	3000	4000	5000
		1.2 NM 1500	TOOPR	4000	5000	6000
		1.2 NM 1500	THRET	5000	6000	6000
		1.2 NM 1500	LOOOT	2000	3000	4000
		1.2 NM 1500	LEFFY	3000	4000	5000
		1.2 NM 1500	TOOPR	4000	5000	6000
		1.2 NM 1500	THRET	5000	6000	6000
		1.2 NM 1500	LOOOT	2000	3000	4000
		1.2 NM 1500	LEFFY	3000	4000	5000
		1.2 NM 1500	TOOPR	4000	5000	6000
		1.2 NM 1500	THRET	5000	6000	6000
		1.2 NM 1500	LOOOT	2000	3000	4000
		1.2 NM 1500	LEFFY	3000	4000	5000
		1.2 NM 1500	TOOPR	4000	5000	6000
		1.2 NM 1500	THRET	5000	6000	6000
		1.2 NM 1500	LOOOT	2000	3000	4000
		1.2 NM 1500	LEFFY	3000	4000	5000
		1.2 NM 1500	TOOPR	4000	5000	6000
		1.2 NM 1500	THRET	5000	6000	6000
		1.2 NM 1500	LOOOT	2000	3000	4000
		1.2 NM 1500	LEFFY	3000	4000	5000
		1.2 NM 1500	TOOPR	4000	5000	6000
		1.2 NM 1500	THRET	5000	6000	6000
		1.2 NM 1500	LOOOT	2000	3000	4000
		1.2 NM 1500	LEFFY	3000	4000	5000
		1.2 NM 1500	TOOPR	4000	5000	6000
		1.2 NM 1500	THRET	5000	6000	6000