

WAAS CH 56409 W01A	APP CRS 011°	Rwy ldg 11500 TDZE 312 Apt Elev 312
---------------------------------	------------------------	--

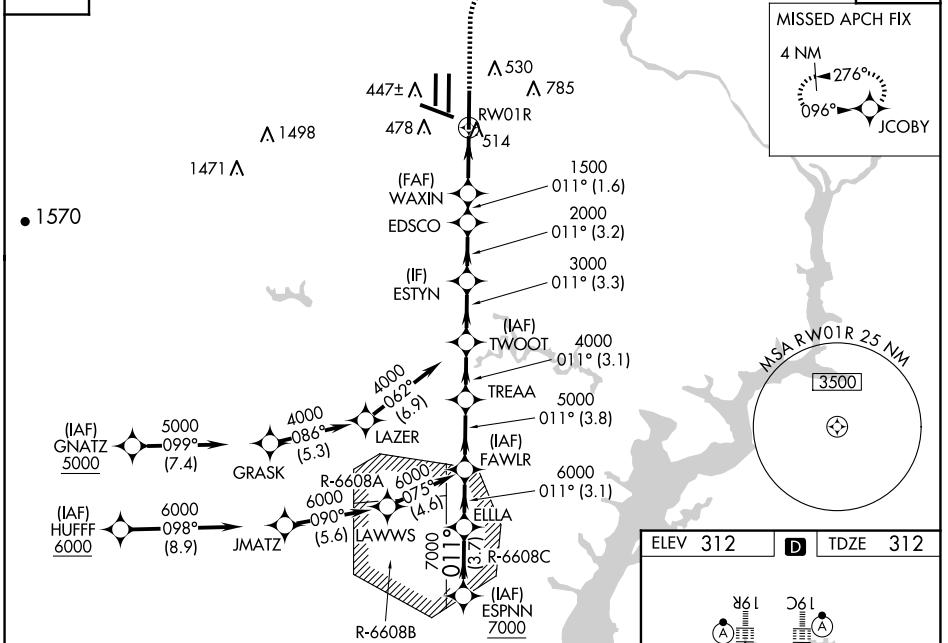
RNAV (GPS) Y RWY 1R

WASHINGTON DULLES INTL (IAD)

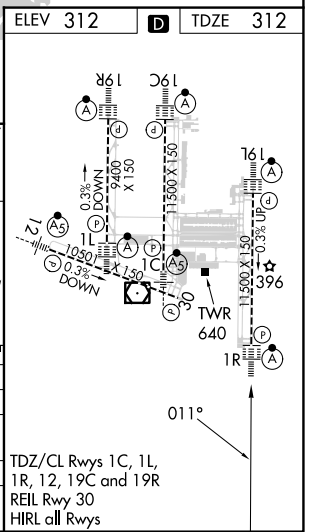
RNP APCH - GPS.	ALSF-2	MISSED APPROACH: Climb to 780, then climbing right turn to 3000 direct JCOBY and hold.
<p>▼ For uncompensated Baro-VNAV systems, LNAV/VNAV NA below -13°C or above 54°C.</p> <p>▲ Simultaneous approach authorized. LNAV procedure NA during simultaneous operations.</p> <p>Use of FD or AP required during simultaneous operations. For inop ALS, increase LNAV/VNAV all Cats visibility to RVR 6000 and LNAV Cat C/D visibility to 1/2 SM.</p>		

POTOMAC APP CON 120.45 306.925 (241°-330°) 128.525 306.925 (091°-240°) 126.1 338.25 (331°-090°)	DULLES TOWER 120.1 317.8 (Rwy 1R/19L) 120.25 348.6 (Rwy 1C/19C) 134.425 348.6 (Rwys 1L/19R and 12/30)	GND CON 121.9 317.8 (EAST) 121.625 348.6 (WEST)	CLNC DEL 135.7 317.8
---	---	---	--------------------------------

D-ATIS 134.85	CPDLC
-------------------------	-------



ESPNN		ELLA		FAWLR		TREAA		TWOOT		ESTYN		EDSCO		WAXIN		RWY 1R	
7000		6000		5000		4000		3000		2000		1500		1500		1500	
GP 3.00°		3.1 NM		3.8 NM		3.1 NM		3.3 NM		3.2 NM		1.6 NM		2.3 NM		1.2	
TCH 55		A		B		C		D									



CATEGORY	A		B		C		D	
LPV DA	512/18		200 (200-1/2)					
LNAV/VNAV DA	728/40		416 (500-3/4)					
LNAV MDA	780/24		468 (500-1/2)		780/50		468 (500-1)	
CIRCLING	940-1		628 (700-1)		940-1 3/4		1180-2 3/4	
					628 (700-1 3/4)		868 (900-2 3/4)	

NE-3, 20 FEB 2025 to 20 MAR 2025

NE-3, 20 FEB 2025 to 20 MAR 2025