

APP CRS	Rwy Idg	10501
301°	TDZE	288
	Apt Elev	312

RNAV (GPS) Y RWY 30

WASHINGTON DULLES INTL (IAD)

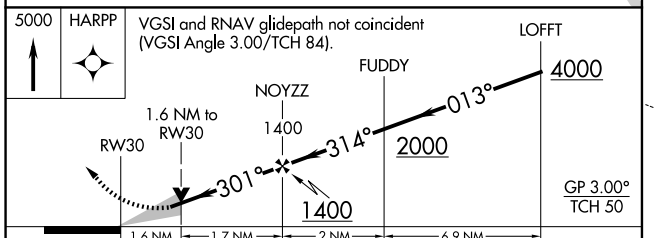
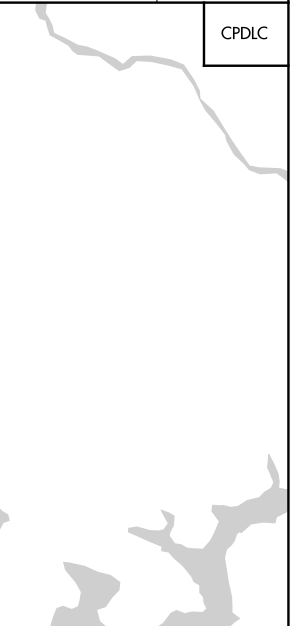
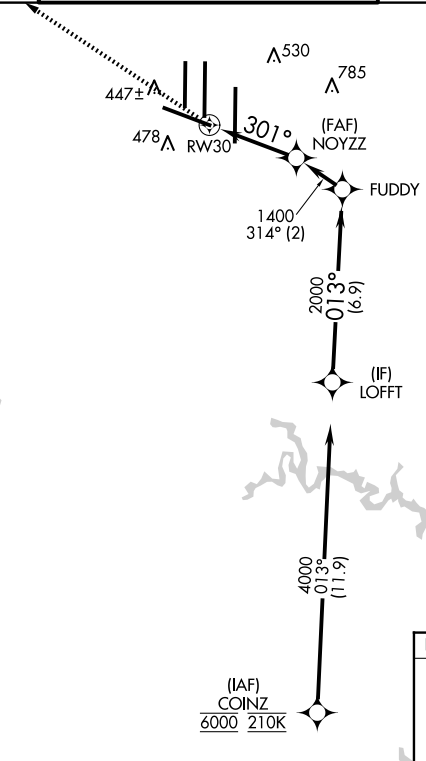
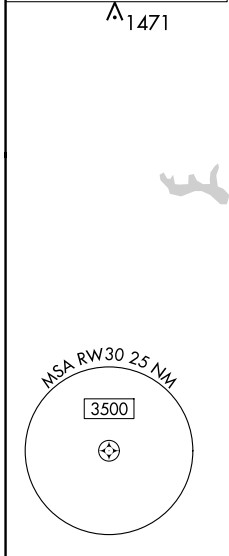
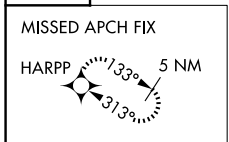
RNP APCH - GPS.

⚠ For uncompensated Baro-VNAV systems, LNAV/VNAV NA below -13°C or above 54°C.

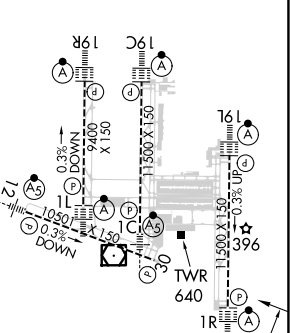
MISSED APPROACH: Climb to 5000 direct HARPP and hold.

POTOMAC APP CON 120.45 306.925 (241°-330°) 128.525 306.925 (091°-240°) 126.1 338.25 (331°-090°)	DULLES TOWER 120.1 317.8 (Rwy 1R/19L) 120.25 348.6 (Rwy 1C/19C) 134.425 348.6 (Rwys 1L/19R and 12/30)	GND CON 121.9 317.8 (EAST) 121.625 348.6 (WEST)	CLNC DEL 135.7 317.8
---	---	---	--------------------------------

D-ATIS 134.85	CPDLC
-------------------------	-------



ELEV 312	D	TDZE 288
----------	----------	----------



CATEGORY	A	B	C	D
LNAV/VNAV DA	801-1 ³ / ₈		513 (500-1 ³ / ₈)	
LNAV MDA	900/55	612 (600-1)	900-1 ³ / ₄	612 (600-1 ³ / ₄)
CIRCLING	940-1	628 (700-1)	940-1 ³ / ₄ 628 (700-1 ³ / ₄)	1180-2 ³ / ₄ 868 (900-2 ³ / ₄)

TDZ/CL 1C, 1L, 1R, 12, 19C and 19R
REIL Rwy 30
HIRL all Rwys

NE-3, 20 FEB 2025 to 20 MAR 2025

NE-3, 20 FEB 2025 to 20 MAR 2025