

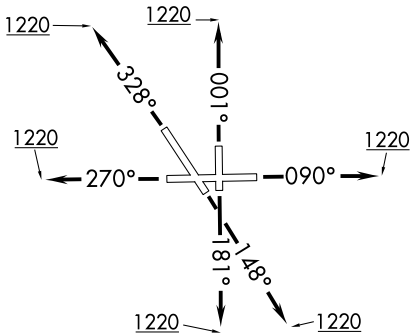
(ADELL7.ADELL) 24305

# ADELL SEVEN DEPARTURE (RNAV)

AURORA MUNI (ARR)  
CHICAGO/AURORA, ILLINOIS

**TOP ALTITUDE:**  
**3000**

CHICAGO DEP CON  
133.5 349.0  
ATIS  
125.85  
GND CON  
121.7  
AURORA TOWER ★  
120.6 (CTAF)



### TAKEOFF MINIMUMS:

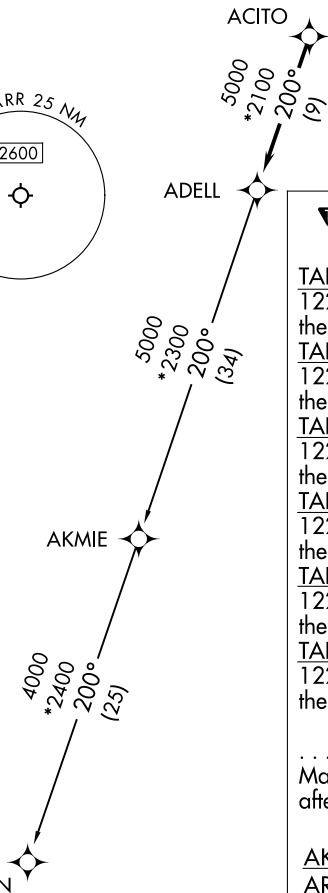
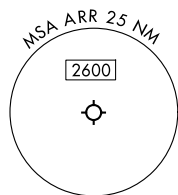
Rwys 9, 15, 18, 27, 33, 36: Standard.

NOTE: Turbojet departures maintain 250K until advised by ATC.

NOTE: AKMIE Transition: For aircraft inbound to BMI, SPI, PIA, or as assigned by ATC.

RNAV 1 - DME/DME/IRU or GPS.

RADAR required. RADAR required for non-GPS equipped aircraft.



### DEPARTURE ROUTE DESCRIPTION

**TAKEOFF RUNWAY 9:** Climb on heading 090° to 1220, then as assigned by ATC, for vectors to ACITO, thence. . . .

**TAKEOFF RUNWAY 15:** Climb on heading 148° to 1220, then as assigned by ATC, for vectors to ACITO, thence. . . .

**TAKEOFF RUNWAY 18:** Climb on heading 181° to 1220, then as assigned by ATC, for vectors to ACITO, thence. . . .

**TAKEOFF RUNWAY 27:** Climb on heading 270° to 1220, then as assigned by ATC, for vectors to ACITO, thence. . . .

**TAKEOFF RUNWAY 33:** Climb on heading 328° to 1220, then as assigned by ATC, for vectors to ACITO, thence. . . .

**TAKEOFF RUNWAY 36:** Climb on heading 001° to 1220, then as assigned by ATC, for vectors to ACITO, thence. . . .

. . . . on track 200° to ADELL, then on (transition). Maintain 3000. Expect filed altitude 10 minutes after departure.

**AKMIE TRANSITION (ADELL7.AKMIE):**

**ARLYN TRANSITION (ADELL7.ARLYN):**

NOTE: Chart not to scale.

# ADELL SEVEN DEPARTURE (RNAV)

(ADELL7.ADELL) 31OCT24

CHICAGO/AURORA, ILLINOIS  
AURORA MUNI (ARR)

EC-3, 20 FEB 2025 to 20 MAR 2025

EC-3, 20 FEB 2025 to 20 MAR 2025