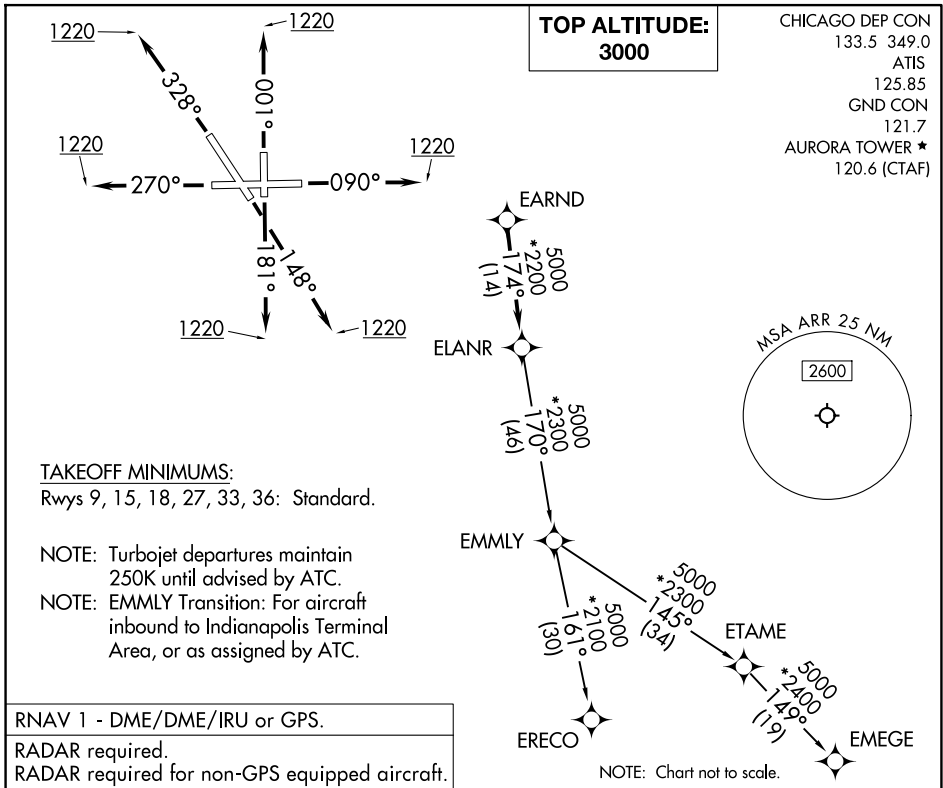


# ELANR SEVEN DEPARTURE (RNAV)



EC-3, 20 FEB 2025 to 20 MAR 2025

EC-3, 20 FEB 2025 to 20 MAR 2025

**DEPARTURE ROUTE DESCRIPTION**

**TAKEOFF RUNWAY 9:** Climb on heading 090° to 1220, then as assigned by ATC, for vectors to EARND, thence. . . .

**TAKEOFF RUNWAY 15:** Climb on heading 148° to 1220, then as assigned by ATC, for vectors to EARND, thence. . . .

**TAKEOFF RUNWAY 18:** Climb on heading 181° to 1220, then as assigned by ATC, for vectors to EARND, thence. . . .

**TAKEOFF RUNWAY 27:** Climb on heading 270° to 1220, then as assigned by ATC, for vectors to EARND, thence. . . .

**TAKEOFF RUNWAY 33:** Climb on heading 328° to 1220, then as assigned by ATC, for vectors to EARND, thence. . . .

**TAKEOFF RUNWAY 36:** Climb on heading 001° to 1220, then as assigned by ATC, for vectors to EARND, thence. . . .

. . . . on track 174° to ELANR, then on (transition), maintain 3000.  
 Expect filed altitude 10 minutes after departure.

**EMEGE TRANSITION (ELANR7.EMEGE):**  
**EMMLY TRANSITION (ELANR7.EMMLY):**  
**ERECO TRANSITION (ELANR7.ERECO):**