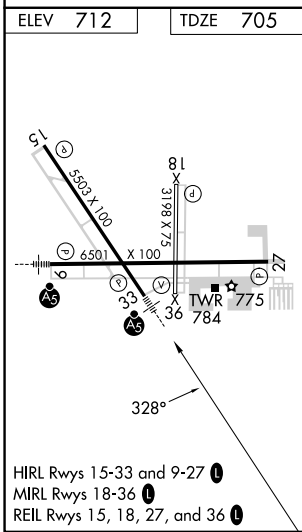
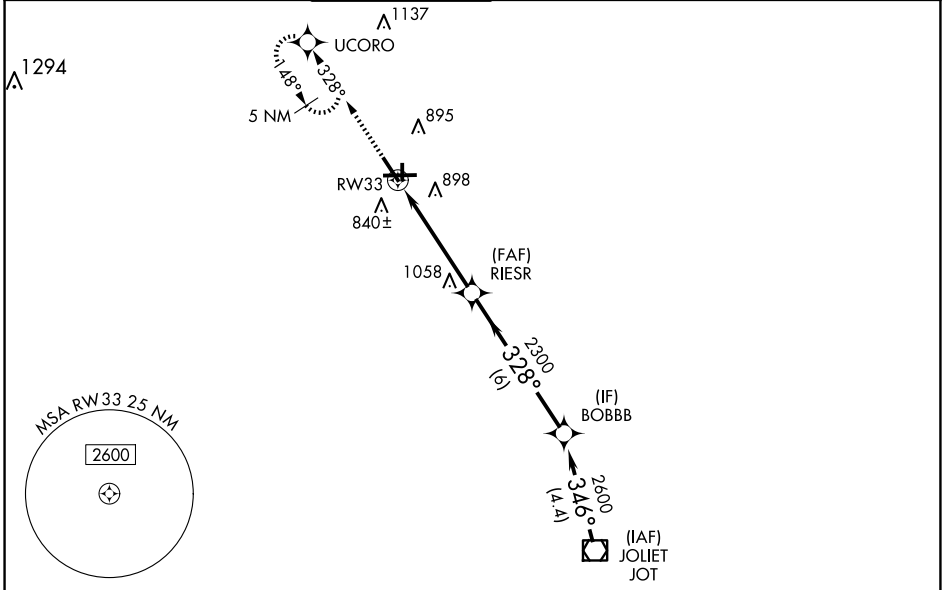


WAAS CH <b>49105</b> <b>W33A</b>	APP CRS <b>328°</b>	Rwy ldg <b>5503</b> TDZE <b>705</b> Apt Elev <b>712</b>
--	------------------------	---

# RNAV (GPS) RWY 33

AURORA MUNI (A.R.R.)

RNP APCH - GPS.				MALSR  MISSED APPROACH: Climb to 3000 direct UCORO and hold, continue climb-in-hold to 3000.	
▼ For uncompensated Baro-VNAV systems, LNAV/VNAV NA below -16°C or above 54°C. For inop MALSR, increase LPV visibility to 1/4 SM all Cnts, LNAV Cats A/B visibility to 1 SM.					
ATIS <b>125.85</b>	CHICAGO APP CON <b>133.5 349.0</b>	<b>AURORA TOWER *</b> <b>120.6 (CTAF) 0</b>	GND CON <b>121.7</b>	CLNC DEL <b>121.7</b> <small>(When tower closed)</small>	UNICOM <b>122.95 123.5</b>



Procedure NA for arrival on JOT VOR/DME airway radials 314 CW 328.

ELEV 712	TDZE 705				
3000 UCORO					
*LNAV only.					
	RW33	RIESR	BOBBB	JOT VOR/DME	
	1.3 NM	3.5 NM	6 NM	4.4 NM	
	2300	2300	2600	2600	GP 3.00° TCH 48
CATEGORY	A	B	C	D	
LPV DA		1042-3/4	337 (400-3/4)		
LNAV/VNAV DA		1194-1 1/4	489 (500-1 1/4)		
LNAV MDA		1140-3/4	435 (500-3/4)		1140-1 435 (500-1)
<input checked="" type="checkbox"/> CIRCLING		1200-1	488 (500-1)	1300-1 1/2 588 (600-1 1/2)	1320-2 608 (700-2)

EC-3, 20 FEB 2025 to 20 MAR 2025

EC-3, 20 FEB 2025 to 20 MAR 2025