

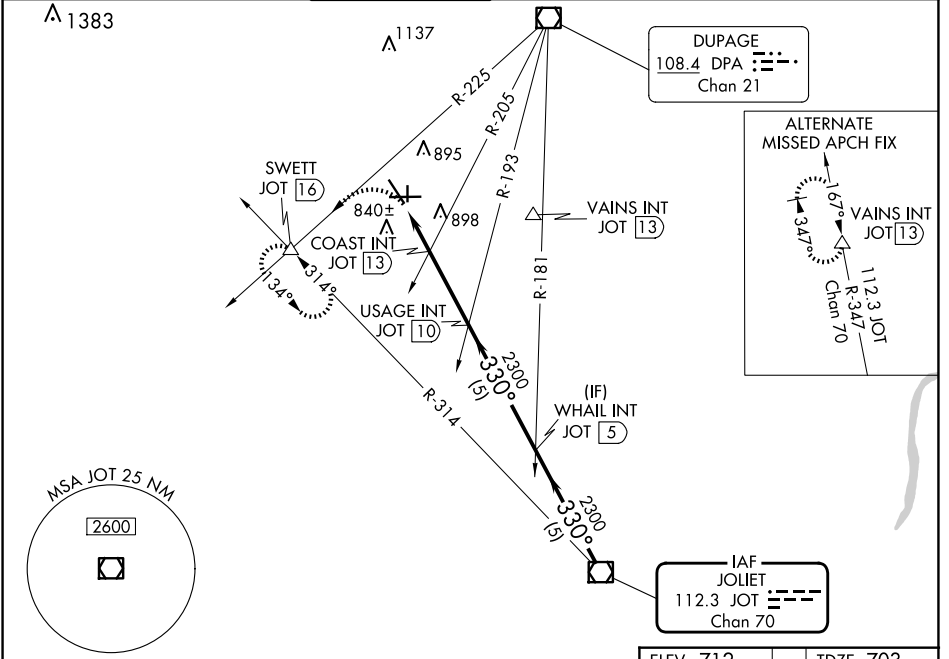
VOR/DME JOT 112.3 Chan 70	APP CRS 330°	Rwy Idg 3198 TDZE 703 Apt Elev 712
---	------------------------	---

VOR RWY 36

AURORA MUNI (A.R.R.)

MISSED APPROACH: Climbing left turn to 3000 on DPA VOR/DME R-225 to SWETT INT/16 DME and hold.

ATIS 125.85	CHICAGO APP CON 133.5 349.0	AURORA TOWER* 120.6 (CTAF) 0	GND CON 121.7	CLNC DEL 121.7 (When tower closed)	UNICOM 122.95 123.5
-----------------------	---------------------------------------	--	-------------------------	---	-------------------------------



3000	SWETT △	USAGE INT JOT (10)	WHAIL INT JOT (5)	JOT VOR/DME
DPA R-225				
	COAST INT JOT (13)			
	JOT (13.7)			
	JOT (15)			
	1.3	0.7	3 NM	5 NM
			2300	330°
			2300	2300
			1360	2.96° TCH 45

CATEGORY	A	B	C	D
S-36	1360-1 657 (700-1)		1360-1¾ 657 (700-1¾)	1360-2 657 (700-2)
C CIRCLING	1360-1 648 (700-1)		1360-1¾ 648 (700-1¾)	1360-2 648 (700-2)
COAST FIX MINIMUMS (DUAL VOR RECEIVERS or DME REQUIRED)				
S-36	1160-1 457 (500-1)		1160-1¼ 457 (500-¼)	1160-1½ 457 (500-½)
C CIRCLING	1200-1 488 (500-1)		1300-1½ 588 (600-½)	1320-2 608 (700-2)

ELEV 712	TDZE 703
MIRL Rwy 18-36 0	
HIRL Rwy 15-33 and 9-27 0	
REIL Rwy 15, 18, 27, and 36 0	

Map view showing VOR RWY 36 approach. Key features include:
 - Distances: 5.1, 5.5, 8.1, 3.198 X 7.5, 6.501 X 100, 3.3
 - Altitudes: 5503 X 100, 775, 784, 330
 - Direction: 330°
 - FAF to MAP 5 NM

Knots	60	90	120	150	180
Min:Sec	5:00	3:20	2:30	2:00	1:40

EC-3, 20 FEB 2025 to 20 MAR 2025

EC-3, 20 FEB 2025 to 20 MAR 2025