

WAAS CH 97612 W31A	APP CRS 309°	Rwy Idg TDZE Apt Elev	5500 2025 2032
--	------------------------	-----------------------------	---

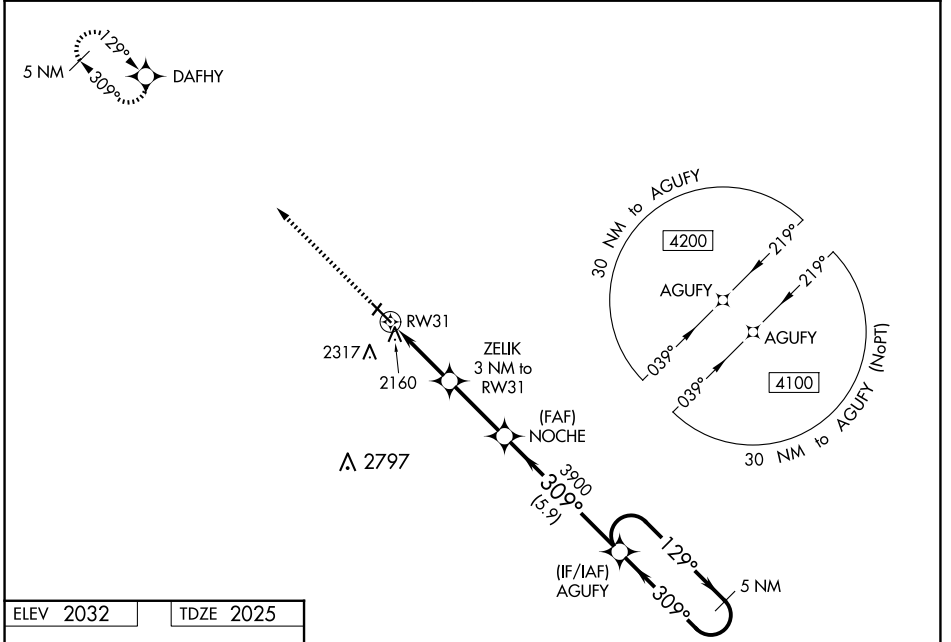
RNAV (GPS) RWY 31

WINNER RGNL (ICR)

⚠ Circling NA to Rws 3 and 21. For uncompensated Baro-VNAV systems, LNAV/VNAV NA below -24° C (-11°F) or above 54°C (130°F). DME/DME RNP-0.3 NA. Baro-VNAV and VDP NA when using Valentine altimeter setting. When local altimeter setting not received, use Valentine, NE altimeter setting and increase LPV DA to 2514, LNAV/VNAV DA to 2549 and all visibilities 7/8 mile, increase all MDA 240 feet; increase Cat B visibility 1/4 mile and Cat C 1 mile.

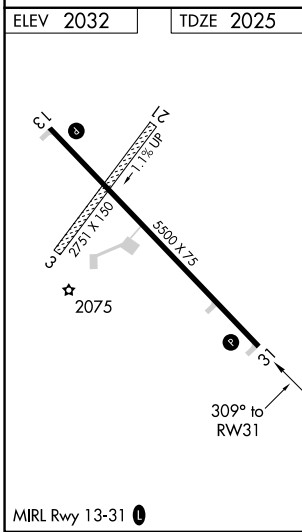
MISSED APPROACH: Climb to 4100 direct DAFHY and hold.

ASOS 126.775	MINNEAPOLIS CENTER 125.1 269.1	GCO 121.725	UNICOM 122.8 (CTAF) 0
------------------------	--	-----------------------	---------------------------------



NC-1, 20 FEB 2025 to 20 MAR 2025

NC-1, 20 FEB 2025 to 20 MAR 2025



4100	DAFHY	AGUFY 5 NM Holding Pattern			
*LNAV only	ZELIK 3 NM to RW31	NOCHE 3900	309°	129°	4100
	1.1 NM to RW31	3000	309°	309°	GP 3.00° TCH 32
	1.1 NM	1.9 NM	2.8 NM	5.9 NM	
CATEGORY	A	B	C	D	
LPV DA	2275-1	250 (300-1)			NA
LNAV/VNAV DA	2310-1	285 (300-1)			NA
LNAV MDA	2420-1	395 (400-1)	2420-1 1/8	395 (400-1 1/8)	NA
C CIRCLING	2580-1	2680-1	2680-1 3/4	648 (700-1 3/4)	NA
	548 (600-1)	648 (700-1)	648 (700-1 3/4)		