

WAAS CH <b>69204</b> <b>W33A</b>	APP CRS <b>336°</b>	Rwy Idg <b>5950</b> TDZE <b>4316</b> Apt Elev <b>4317</b>
--	------------------------	---

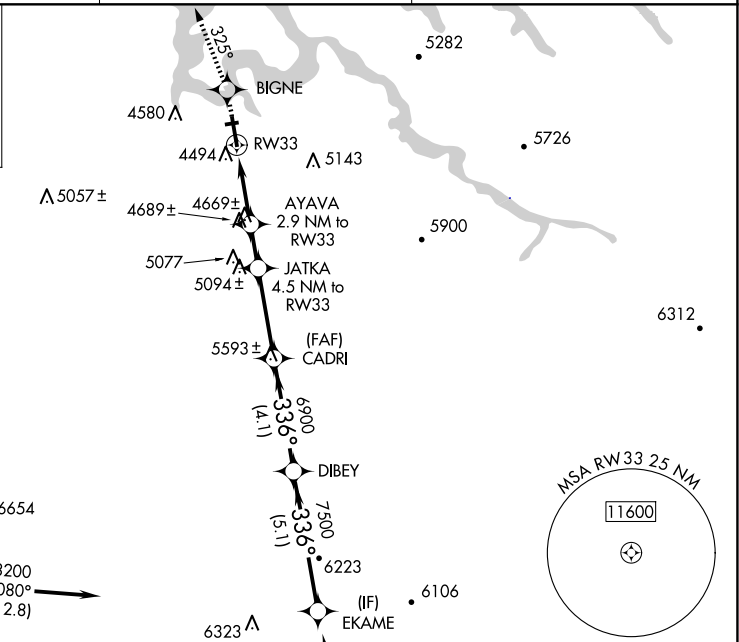
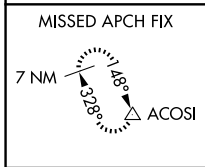
# RNAV (GPS) RWY 33

PAGE MUNI (PGA)

For uncompensated Baro-VNAV systems, LNAV/VNAV NA below -23°C (-9°F) or above 41°C (105°F).  
DME/DME RNP-0.3 NA. Circling NA to Rwy 7-25.

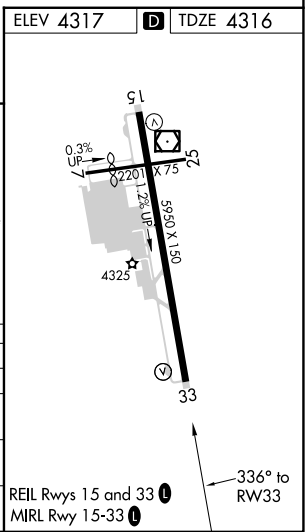
MISSED APPROACH: Climb to 8500 direct BIGNE and via 325° track to ACOSI and hold, continue climb-in-hold to 8500.

ASOS <b>120.625</b>	DENVER CENTER <b>127.55 256.875</b>	UNICOM <b>122.8 (CTAF)</b>
------------------------	--	-------------------------------



Procedure NA for arrivals at CELAY via V208 southbound.

8500	BIGNE	ACOSI	VGSI and RNAV glidepath not coincident (VGSI Angle 3.00/TCH 30).			EKAME		
↑	325° tr	△	JATKA	CADRI	DIBEY	8200		
			AYAVA 2.9 NM to RW33	4.5 NM to RW33		Procedure Turn NA		
			*1.8 NM to RW33			GP 3.00° TCH 50		
			5280	5800	6900			
			1.8 NM	1.1 NM	1.6 NM	3.3 NM	4.1 NM	5.1 NM
CATEGORY	A	B	C	D				
LPV DA	4566-1		250 (300-1)					
LNAV/VNAV DA	4744-1½		428 (500-1½)					
LNAV MDA	4920-1	604 (700-1)	4920-1¾	604 (700-1¾)	4920-2	604 (700-2)		
CIRCLING	4920-1	603 (700-1)	5080-2¼	763 (800-2¼)	5360-3	1043 (1100-3)		



SW-4, 20 FEB 2025 to 20 MAR 2025

SW-4, 20 FEB 2025 to 20 MAR 2025