

LOC I-CWF	APP CRS	Rwy Idg	<b>10702</b>
<b>110.7</b>	<b>154°</b>	TDZE	<b>16</b>
		Apt Elev	<b>17</b>

# ILS or LOC RWY 15

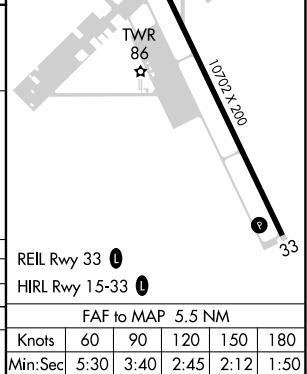
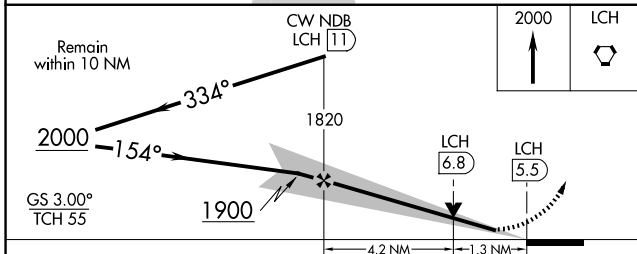
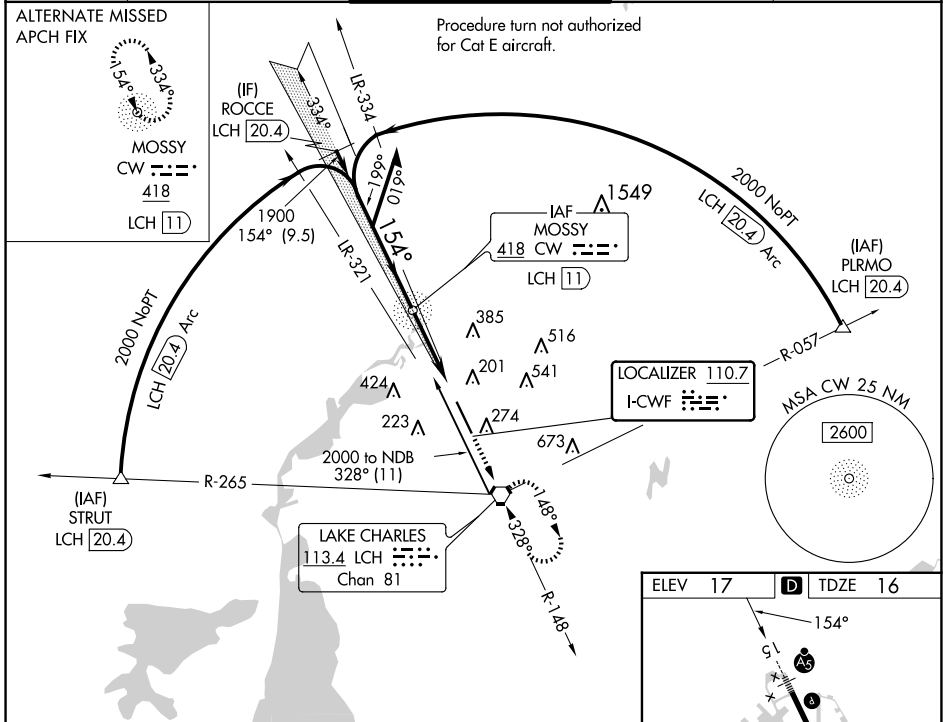
CHENNAULT INTL (CWF)

ADF or DME required for procedure entry. ADF or DME required for LOC only.

**NA** VDP NA when using Lake Charles Rgnl altimeter setting. When local altimeter setting not received, use Lake Charles Rgnl altimeter setting: Increase DA to 232 feet; Increase all MDA's 20 feet and visibility Circling Cat D ¼ SM. For inop ALS, increase S-ILS 15 Cat E visibility to ¾ SM, and S-LOC 15 Cats C/D/E to 1 ¾ SM. For inop ALS when using Lake Charles altimeter settings, increase S-ILS 15 Cat E visibility to ¾ SM, and S-LOC 15 Cats C/D/E to 1 ¾ SM. DME from LCH VORTAC. DME use requires simultaneous reception of I-CWF and LCH DME.

**MALSR** MISSED APPROACH: Climb to 2000 direct LCH VORTAC and hold, continue climb-in-hold to 2000.

ATIS	LAKE CHARLES APP CON*	CHENNAULT TOWER*	GND CON	UNICOM
<b>120.0</b>	<b>119.8 282.3</b>	<b>124.2 (CTAF) 290.4</b>	<b>121.65 275.8</b>	<b>122.95</b>



CATEGORY	A	B	C	D	E
S-ILS 15	216-½ 200 (200-½)				
S-LOC 15	480-½	464 (500-½)	480-1 464 (500-1)		
CIRCLING	640-1	623 (700-1)	640-1¾ 623 (700-1¾)	740-2¼ 723 (800-2¼)	900-3 883 (900-3)

SC-4, 20 FEB 2025 to 20 MAR 2025

SC-4, 20 FEB 2025 to 20 MAR 2025