

WAAS CH 65817 W33A	APP CRS 334°	Rwy Idg 10702 TDZE 17 Apt Elev 17
--	------------------------	--

RNAV (GPS) RWY 33

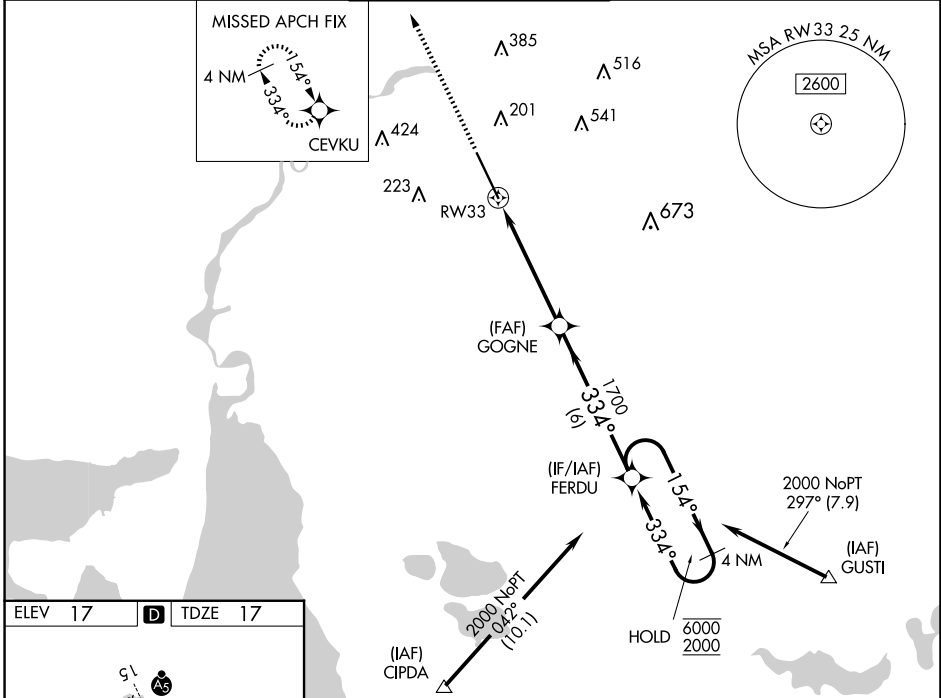
CHENNAULT INTL (CWF')

RNP APCH - GPS.

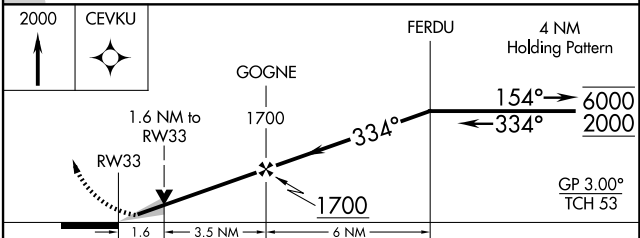
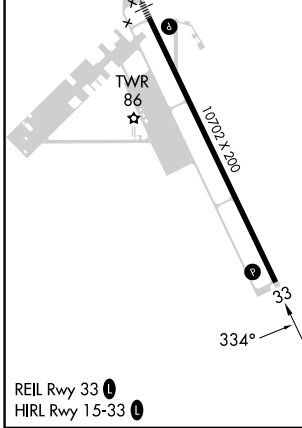
▼ Baro-VNAV and VDP NA when using Lake Charles Rgnl altimeter setting.
 ▲ For uncompensated Baro-VNAV systems, LNAV/VNAV NA below -15°C or above 54°C.
 ▲ ASR When local altimeter setting not received, use Lake Charles Rgnl altimeter setting and increase LPV DA to 233 feet; increase LNAV/VNAV DA to 510 feet and all visibilities 1/8 SM. Increase all MDAs 20 feet and LNAV visibility Cat C/D 1/8 SM.

MISSED APPROACH: Climb to 2000 direct CEVKU and hold.

ATIS 120.0	LAKE CHARLES APP CON ★ 119.8 282.3	CHENNAULT TOWER ★ 124.2 (CTAF) 0 290.4	GND CON 121.65 275.8	UNICOM 122.95
----------------------	--	--	--------------------------------	-------------------------



ELEV 17	D	TDZE 17
---------	----------	---------



CATEGORY	A	B	C	D
LPV DA	217-3/4 200 (200-3/4)			
LNAV/VNAV DA	494-13/4 477 (500-13/4)			
LNAV MDA	580-1 563 (600-1)		580-15/8 563 (600-15/8)	
C CIRCLING	640-1 623 (700-1)		640-13/4 740-21/4 623 (700-13/4) 723 (800-21/4)	

SC-4, 20 FEB 2025 to 20 MAR 2025

SC-4, 20 FEB 2025 to 20 MAR 2025