

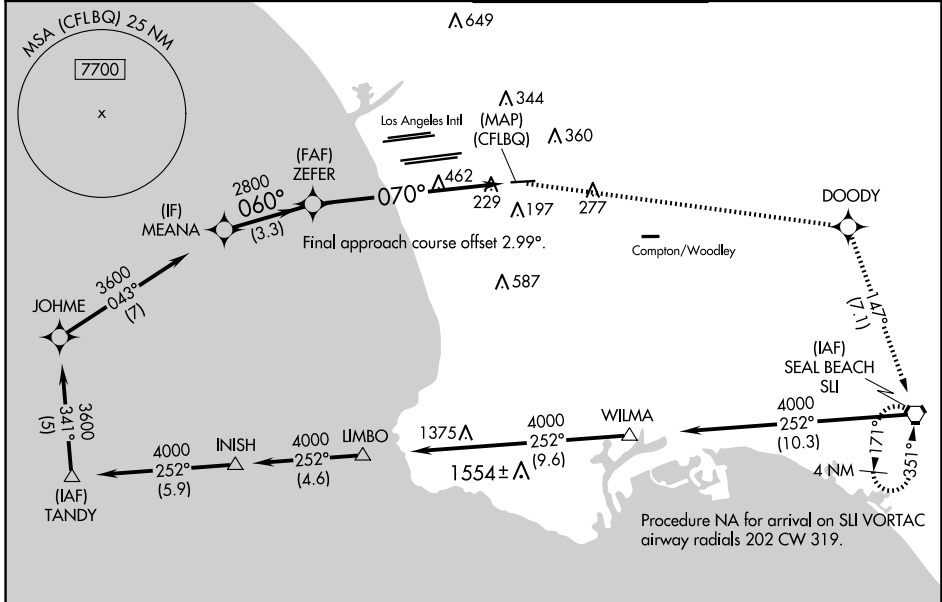
WAAS CH <b>40344</b> <b>W07A</b>	APP CRS <b>070°</b>	Rwy Idg <b>3762</b> TDZE <b>64</b> Apt Elev <b>66</b>
--	------------------------	---

# RNAV (GPS) RWY 7

JACK NORTHROP FLD/HAWTHORNE MUNI (HHR)

RNP APCH - GPS.	<p><b>⚠</b> Procedure NA at night. Rwy 7 helicopter visibility reduction below 1 SM NA. For uncompensated Baro-VNAV systems, LNAV/VNAV NA below 5°C or above 51°C. Circling NA north of Rwy 7-25.</p>	<p><b>⚠</b> MISSED APPROACH: Climb to 4000 direct DOODY and right turn on 147° track to SLI VORTAC and hold, continue climb-in-hold to 4000.</p>
-----------------	---	--

<p>ATIS <b>118.4</b></p>	<p>SOCAL APP CON <b>124.9 269.0</b></p>	<p>HAWTHORNE TOWER * <b>121.1(CTAF) 0 257.8</b></p>	<p>GND CON <b>125.1</b></p>
------------------------------	---	---	---------------------------------

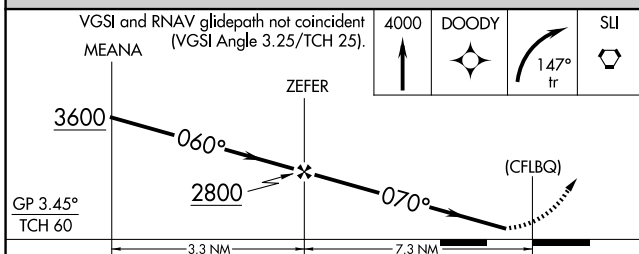


SW-3, 20 FEB 2025 to 20 MAR 2025

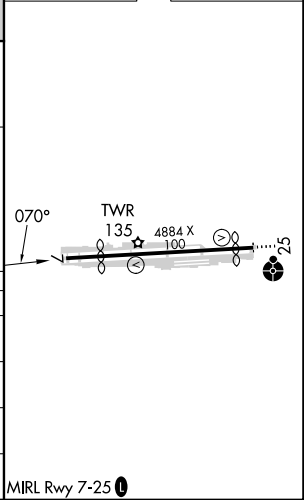
SW-3, 20 FEB 2025 to 20 MAR 2025

Procedure NA for arrival on SLI VORTAC airway radials 202 CW 319.

ELEV 66	<b>D</b> TDZE 64
---------	------------------



CATEGORY	A	B	C	D
LPV DA	342-1 278 (300-1)			
LNAV/VNAV DA	500-1¼ 436 (500-1¼)			
LNAV MDA	780-1	716 (800-1)	780-2	716 (800-2)
<b>C</b> CIRCLING	780-1	714 (800-1)	780-2 714 (800-2)	780-2¼ 714 (800-2¼)



# RNAV (GPS) RWY 7