

SAN CLEMENTE ISLAND, CALIFORNIA

RNAV (GPS) RWY 24

WAAS CH 87812 W24A	APCH CRS 235°	Rwy ldg TDZE 184 Arprt Elev 184
---------------------------------	-------------------------	---

-(USN)

SAN CLEMENTE ISLAND NALF (FREDERICK SHERMAN FLD) (KNUC)

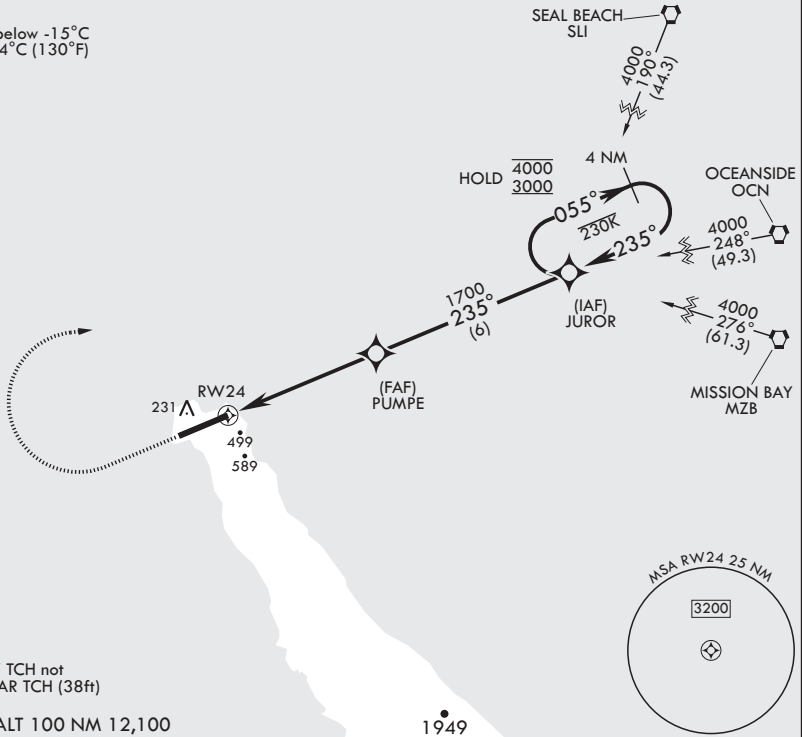
RNP APCH

MISSED APPROACH: Climb to 1500, then climbing right turn to 3000 direct JUROR and hold.

⚠ * Circling not authorized S of Rwy 6-24.

ATIS* 268.6	SAN CLEMENTE APP CON 127.05 292.15	TOWER* 126.75 278.8	GND CON 119.55 251.05	ASR/PAR
-----------------------	--	-------------------------------	---------------------------------	---------

Baro-VNAV NA below -15°C (5°F) or above 54°C (130°F)

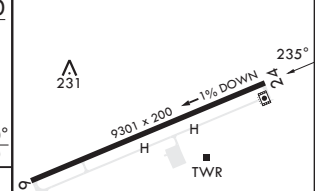
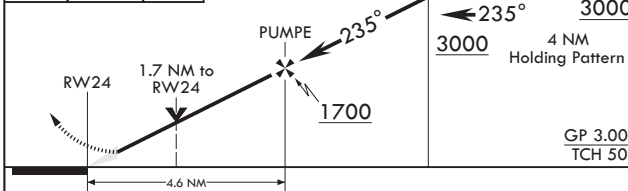


CAUTION: RNAV TCH not coincident with PAR TCH (38ft)

EMERG SAFE ALT 100 NM 12,100

1949

1500 crs 235°	3000	JUROR	ELEV 184	TDZE 184
---------------------	------	-------	----------	----------



CATEGORY	A	B	C	D
LPV DA	384-3/4		200 (200-3/4)	
LNAV/VNAV DA	632-1 3/8 448 (500-1 3/8)	641-1 3/8 457 (500-1 3/8)	649-1 3/8 465 (500-1 3/8)	661-1 3/8 477 (500-1 3/8)
LNAV MDA	760-1	576 (600-1)	760-1 3/8	576 (600-1 3/8)
C CIRCLING*	780-1	596 (600-1)	780-1 3/8 596 (600-1 3/8)	780-2 596 (600-2)

REIL Rwy 6
REIL Rwy 24
HIRL all Rwy's

SAN CLEMENTE ISLAND, CALIFORNIA

SAN CLEMENTE ISLAND NALF (FREDERICK SHERMAN FLD) (KNUC)

Amdt 5 24FEB22

33°01'N - 118°35'W

RNAV (GPS) RWY 24

SW-3, 20 FEB 2025 to 20 MAR 2025

SW-3, 20 FEB 2025 to 20 MAR 2025