

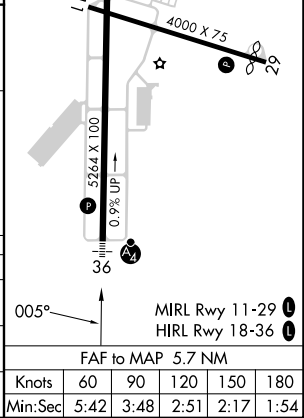
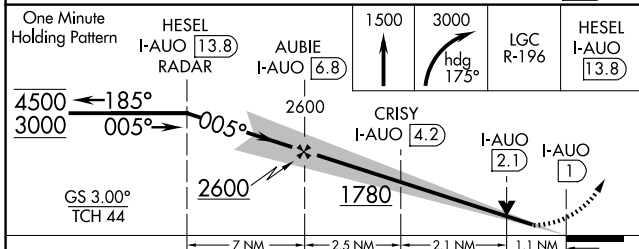
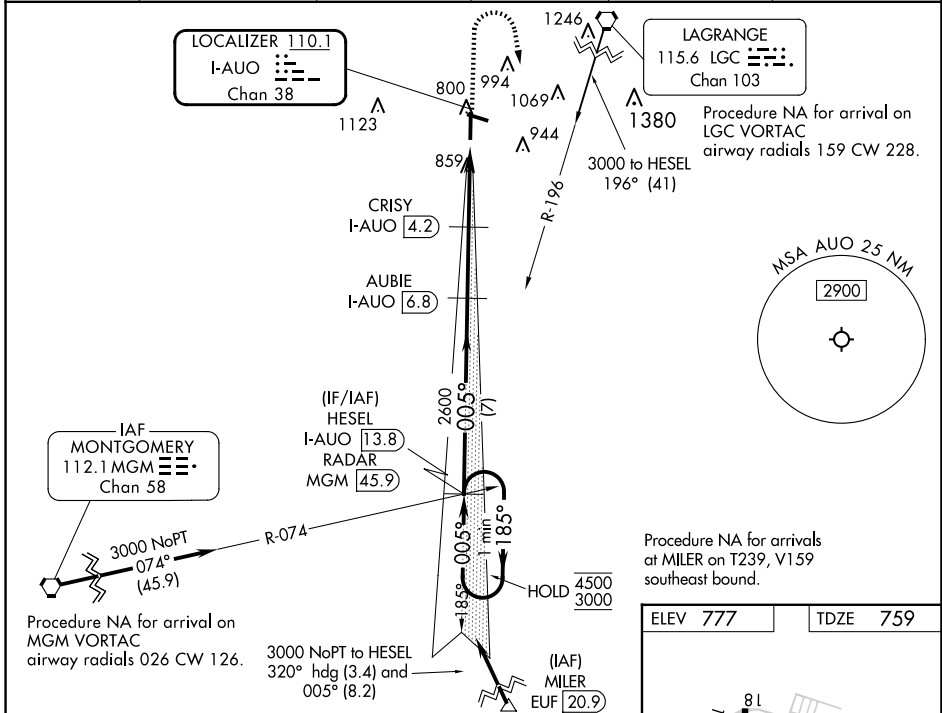
LOC/DME I-AUO <b>110.1</b> Chan <b>38</b>	APP CRS <b>005°</b>	Rwy Idg TDZE Apt Elev	<b>5264</b> <b>759</b> <b>777</b>
---	------------------------	-----------------------------	---

# ILS or LOC RWY 36

AUBURN UNIVERSITY RGNL (AUO)

DME required.	MALSF	MISSED APPROACH: Climb to 1500 then climbing right turn to 3000 on heading 175° and on LGC VORTAC R-196 to HESEL/I-AUO 13.8 DME/RADAR and hold.
⚠ Inop table does not apply to S-ILS 36 all Cats.		

AWOS-3PT <b>132.575</b>	ATLANTA APP CON ★ <b>125.5 323.1</b>	AUBURN TOWER★ <b>123.875</b>	GND CON★ <b>121.625</b>	CLNC DEL <b>118.7</b> (When twr closed)	UNICOM <b>123.0</b> (CTAF)
----------------------------	---	---------------------------------	----------------------------	---	-------------------------------



CATEGORY	A	B	C	D
S-ILS 36		959-3/4	200 (200-3/4)	
S-LOC 36		1120-3/4	361 (400-3/4)	
CIRCLING	1240-1 463 (500-1)	1360-1 583 (600-1)	1380-1 3/4 603 (700-1 3/4)	1440-2 663 (700-2)

SE-4, 20 FEB 2025 to 20 MAR 2025

SE-4, 20 FEB 2025 to 20 MAR 2025