


LOC I-ECC 110.1	APP CRS 200°	Rwy Idg TDZE Apt Elev	8653 5605 5622
---------------------------	------------------------	-----------------------------	-------------------------------------------

ILS or LOC RWY 20

CEDAR CITY RGNL (CDC)

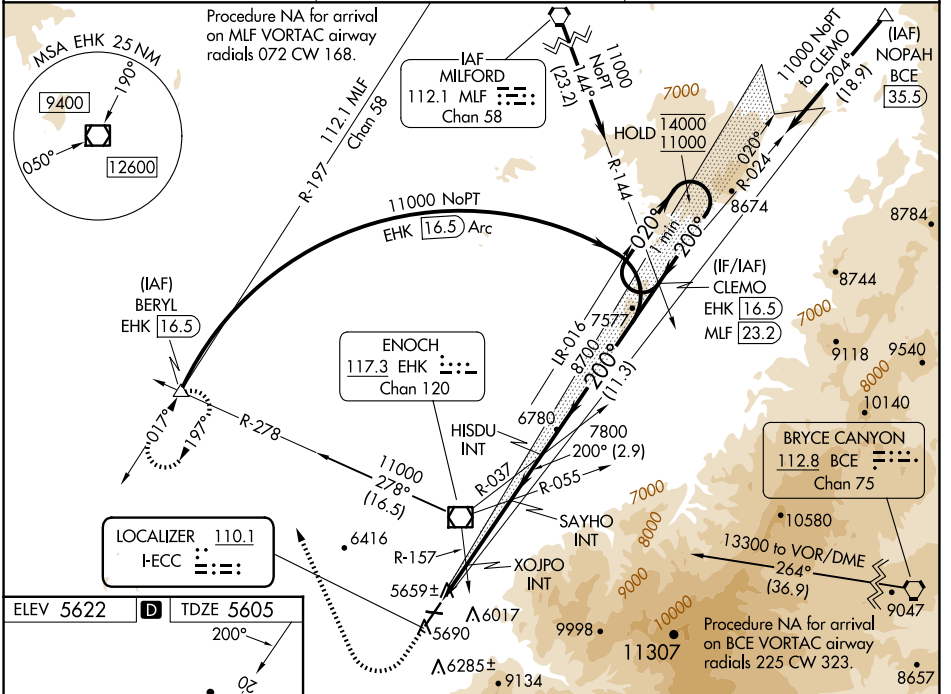
DME required.

NA XOJPO fix minimums (Dual VOR receivers required): For inop ALS, increase S-LOC 20 Cats C/D visibility to 1 $\frac{1}{2}$ SM. For inop ALS, increase S-LOC 20 Cats C/D visibility to 2 $\frac{1}{2}$ SM.
#For inop ALS, increase S-ILS 20 visibility all Cats to 1 SM.

MALSR 

MISSED APPROACH: Climb to 6200 then climbing right turn to 10000 on heading 322° and on EHK R-278 to BERYL INT/EHK 16.5 DME and hold, continue climb-in-hold to 10000.
† Missed approach requires minimum climb of 210 feet per NM to 7300.

ASOS 119.025	SALT LAKE CITY CENTER 125.575 379.275	UNICOM 123.0 (CTAF) 0
------------------------	-------------------------------------------------	---------------------------------



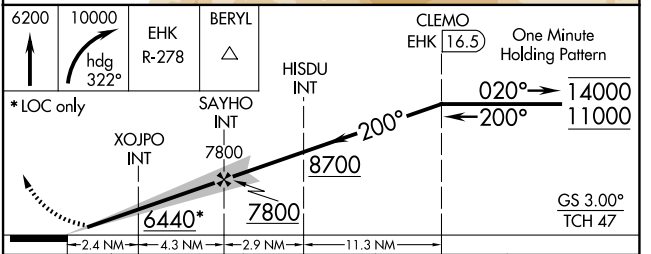
ELEV 5622 **D** TDZE 5605

LOCALIZER 110.1
I-ECC

HIRL Rwy 2-20
MIRL Rwy 8-26
REIL Rwys 2, 8 and 26

FAF to MAP 6.7 NM

Knots 60 90 120 150 180
Min:Sec 6:42 4:28 3:21 2:41 2:14



CATEGORY	A	B	C	D
S-ILS 20†		5825- $\frac{1}{2}$	220 (300- $\frac{1}{2}$)	
S-ILS 20#		5882- $\frac{1}{2}$	277 (300- $\frac{1}{2}$)	
S-LOC 20	6440- $\frac{1}{2}$ 835 (900- $\frac{1}{2}$)	6440- $\frac{3}{4}$ 835 (900- $\frac{3}{4}$)	6440-1 $\frac{1}{8}$	835 (900-1 $\frac{1}{8}$)
XOJPO FIX MINIMUMS (DUAL VOR RECEIVERS REQUIRED)				
S-LOC 20	6100- $\frac{1}{2}$	495 (500- $\frac{1}{2}$)	6100-1	495 (500-1)

SW-4, 20 FEB 2025 to 20 MAR 2025

SW-4, 20 FEB 2025 to 20 MAR 2025