

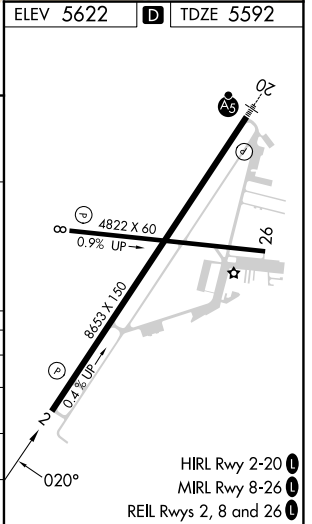
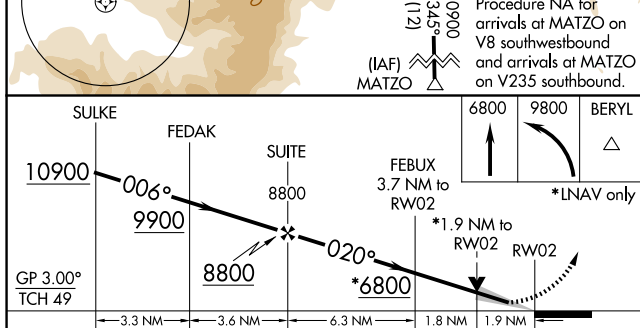
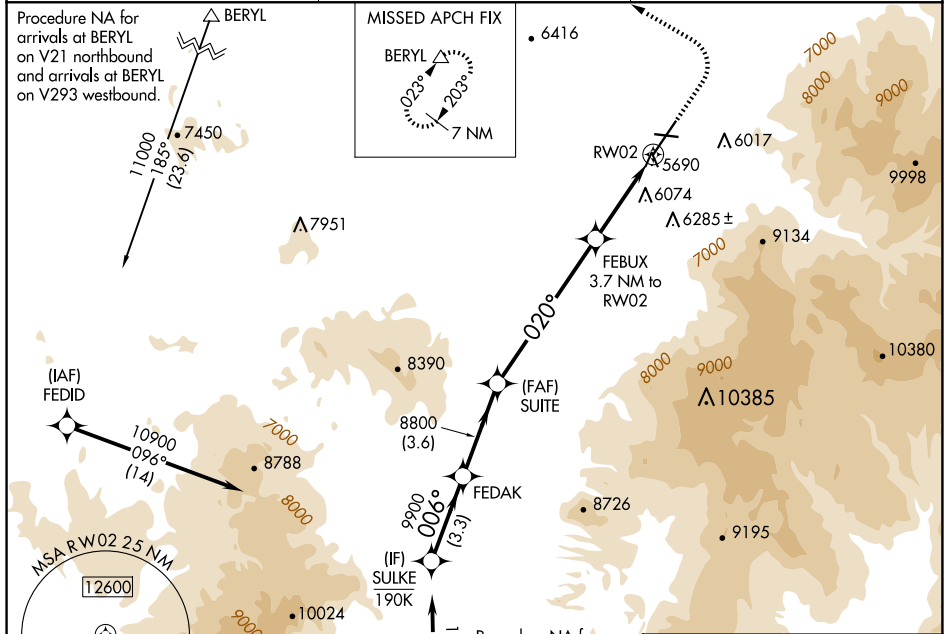
WAAS CH 49143	APP CRS 020°	Rwy Idg TDZE Apt Elev	8653 5592 5622
-------------------------	------------------------	-----------------------------	---

RNAV (GPS) RWY 2

CEDAR CITY RGNL (CDC)

RNP APCH.	MISSED APPROACH: Climb to 6800 then climbing left turn to 9800 direct BERYL and hold.
 	Circling NA east of Rwy 2-20. Baro-VNAV NA.

ASOS 119.025	SALT LAKE CITY CENTER 125.575 379.275	UNICOM 123.0 (CTAF) 0
------------------------	---	---------------------------------



CATEGORY	A	B	C	D
LPV DA	5867-7/8		275 (300-7/8)	
LNNAV/VNAV DA	6394-2 1/2		802 (800-2 1/2)	
LNNAV MDA	6240-1	648 (700-1)	6240-1 7/8	648 (700-1 7/8)
CIRCLING	6240-1	618 (700-1)	6240-1 7/8	6240-2
			618 (700-1 7/8)	618 (700-2)

SW-4, 20 FEB 2025 to 20 MAR 2025

SW-4, 20 FEB 2025 to 20 MAR 2025