

VOR/DME EHK 117.3 Chan 120	APP CRS 177°	Rwy Idg TDZE Apt Elev 8653 5605 5622
---	------------------------	--

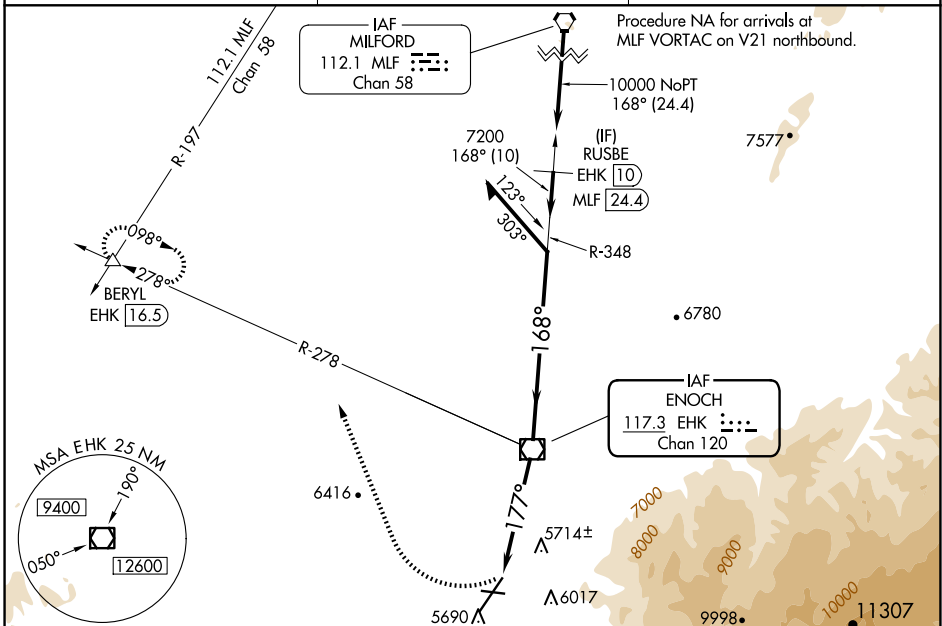
VOR RWY 20

CEDAR CITY RGNL (CDC)

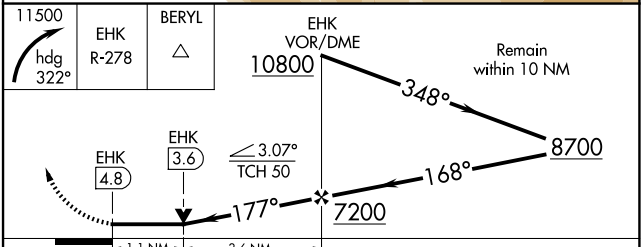
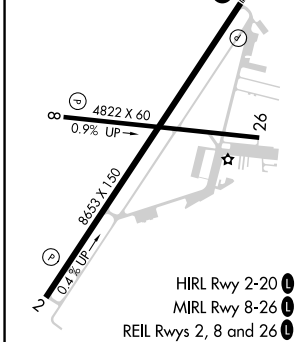
⚠ Circling NA southeast of Rwy 2-20. For inop ALS S-20* increase Cat C/D visibility to 1½ SM.

MALSRL MISSED APPROACH: Climbing right turn to 11 500 on heading 322° and on EHK VOR/DME R-278 to BERYL INT/EHK 16.5 DME and hold, continue climb-in-hold to 11 500.
*Missed approach requires minimum climb of 247 feet per NM to 7500.

ASOS 119.025	SALT LAKE CITY CENTER 125.575 379.275	UNICOM 123.0 (CTAF)
------------------------	---	-------------------------------



ELEV 5622	D	TDZE 5605
-----------	----------	-----------



CATEGORY	A	B	C	D
S-20*	6020-½ 415 (400-½)		6020-¾ 415 (400-¾)	
S-20	6300-½ 695 (700-½)		6300-1½ 695 (700-1½)	
C CIRCLING	6300-1 678 (700-1)		6300-2 678 (700-2)	6300-2¼ 678 (700-2¼)

FAF to MAP 4.8 NM					
Knots	60	90	120	150	180
Min:Sec	4:48	3:12	2:24	1:55	1:36

SW-4, 20 FEB 2025 to 20 MAR 2025

SW-4, 20 FEB 2025 to 20 MAR 2025