

LIMA, OHIO

AL-5143 (FAA)

23110

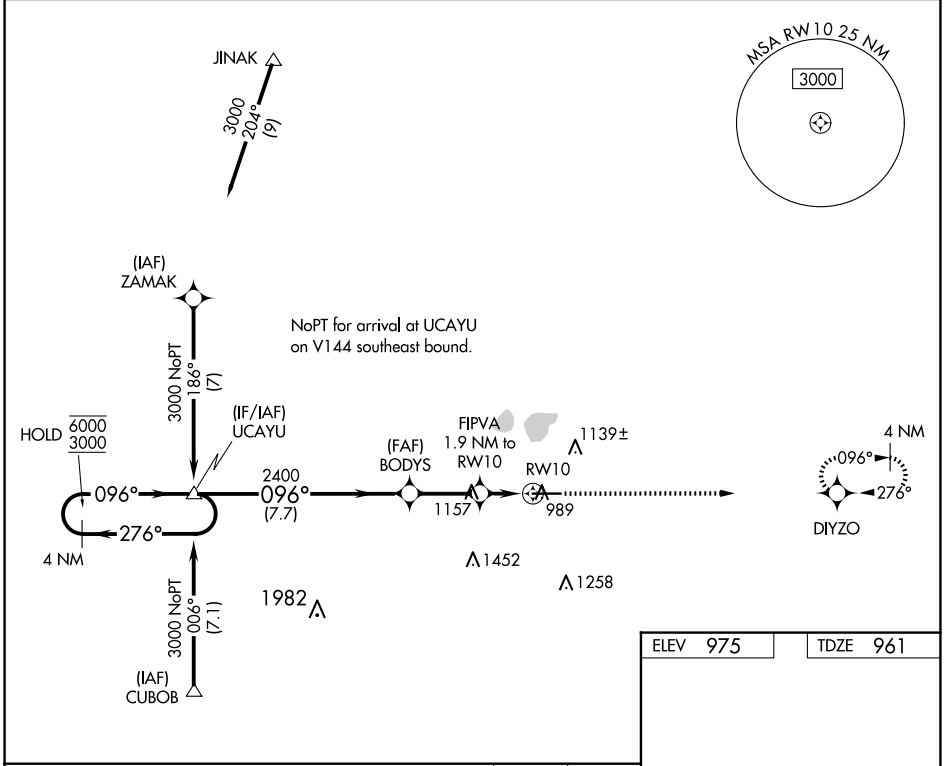
WAAS CH <b>65816</b> <b>W10A</b>	APP CRS <b>096°</b>	Rwy Idg TDZE Apt Elev	<b>6000</b> <b>961</b> <b>975</b>
--	------------------------	-----------------------------	---

# RNAV (GPS) RWY 10

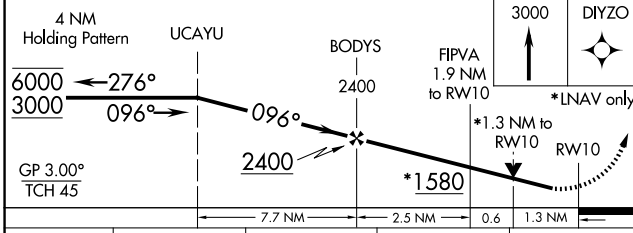
LIMA ALLEN COUNTY (AOH)

RNP APCH.	Rwy 10 helicopter visibility reduction below 3/4 SM NA. For uncompensated Baro-VNAV systems, LNAV/VNAV NA below -16°C or above 54°C.	MISSED APPROACH: Climb to 3000 direct DIYZO and hold.
-----------	--	---

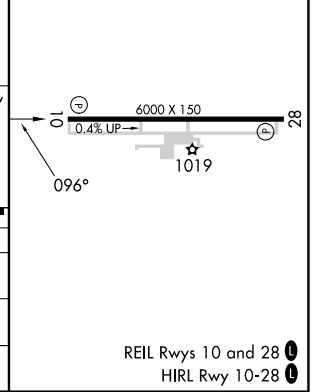
ASOS <b>128.725</b>	COLUMBUS APP CON <b>121.825 323.15</b>	UNICOM <b>122.7 (CTAF) 0</b>
------------------------	---	---------------------------------



ELEV 975	TDZE 961
----------	----------



CATEGORY	A	B	C	D
LPV DA	1211-1 250 (300-1)			
LNAV/VNAV DA	1272-1 311 (300-1)			
LNAV MDA	1420-1 459 (500-1)		1420-1 3/8 459 (500-1 3/8)	



LIMA, OHIO  
Amdt 1C 30JAN20

40°42'N-84°02'W

# RNAV (GPS) RWY 10

EC-2, 20 FEB 2025 to 20 MAR 2025

EC-2, 20 FEB 2025 to 20 MAR 2025

REIL Rwy 10 and 28  
HIRL Rwy 10-28