

VORTAC LVZ 111.6 Chan 53	APP CRS 131°	Rwy Idg TDZE Apt Elev	4500 1885 1915
--	------------------------	-----------------------------	---

VOR/DME RWY 13

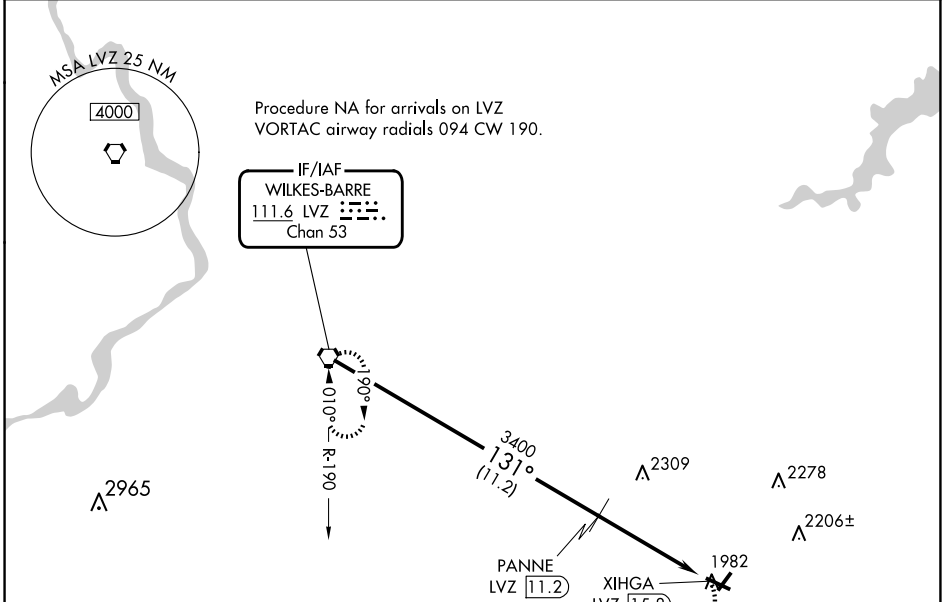
POCONO MOUNTAINS RGNL (MPO)

∇ Circling Rwy 23 NA at night. Helicopter visibility reduction below 3/4 SM NA. When local altimeter setting not received, use Wilkes-Barre/Scranton altimeter setting and increase all MDA 180 feet; increase S-13 Cat B and Circling Cat B visibility 1/4 mile, S-13 Cats C/D visibility 3/4 mile, and Circling Cats C/D visibility 1/2 mile.

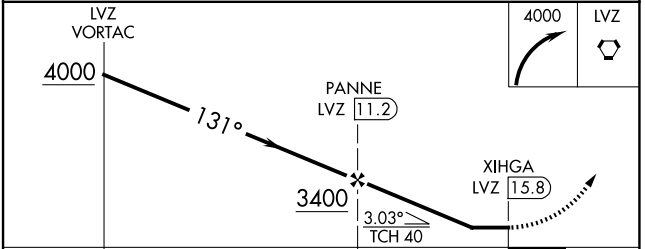
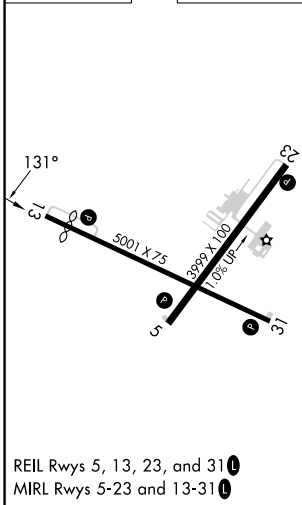
▲

MISSED APPROACH: Climbing right turn to 4000 direct LVZ VORTAC and hold.

ASOS 120.275	WILKES-BARRE APP CON 126.3 256.7	CLNC DEL 125.3	UNICOM 122.7 (CTAF) 0
------------------------	--	--------------------------	---------------------------------



ELEV 1915	TDZE 1885
-----------	-----------



CATEGORY	A	B	C	D
S-13	2500-1	615 (600-1)	2500-1 3/4	615 (600-1 3/4)
☐ CIRCLING	2500-1	585 (600-1)	2600-2 685 (700-2)	2660-2 1/2 745 (800-2 1/2)