

# ILS or LOC RWY 30

LOC I-NSI <b>109.7</b>	APCH CRS <b>301°</b>	Rwy Idg <b>10,002</b> TDZE <b>506</b> Arprt Elev <b>506</b>
---------------------------	-------------------------	--

AL-5162 [USN]

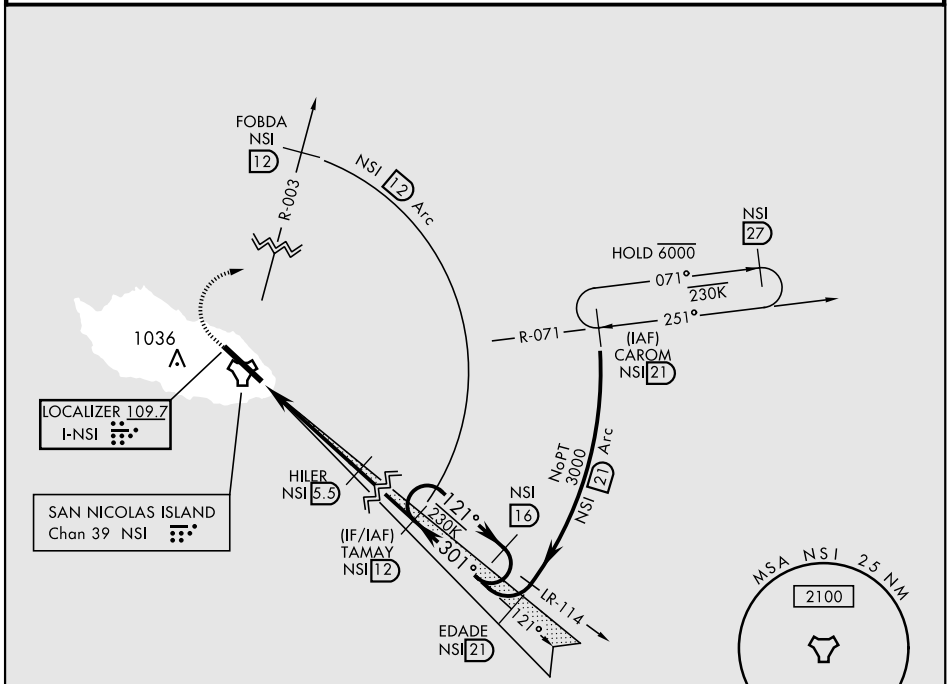
SAN NICOLAS ISLAND NOLF (KNSI)

DME required for ILS procedure. RADAR or TACAN required.

MISSED APPROACH: Climb to 1000 via heading 301°, then climbing right turn to 3000 to intercept NSI TACAN R-003 to FOBDA, then arc E of NSI 12 mile arc to TAMAY and hold.

\* Circling not authorized W of Rwy 12-30.

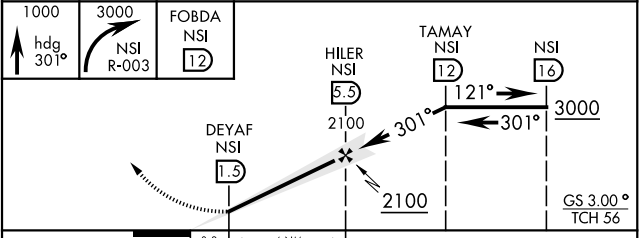
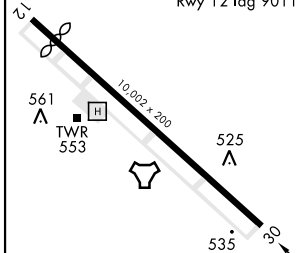
TOWER ★  
**126.85 379.3**



EMERG SAFE ALT 100 NM 10,900

ELEV 506	TDZE 506
----------	----------

Rwy 12 Idg 9011'



CATEGORY	A	B	C	D	E
S-ILS 30	706-¾		200	(200-¾)	
S-LOC 30	780-1		274	(300-1)	
<input checked="" type="checkbox"/> CIRCLING*	860-1 354 (400-1)	960-1 454 (500-1)	960-1½ 454 (500-1½)	1060-2 554 (600-2)	

SAN NICOLAS ISLAND, CALIFORNIA  
Amdt 6 18MAY23

33° 14' N-119° 27' W

SAN NICOLAS ISLAND NOLF (KNSI)

# ILS or LOC RWY 30

SW-3, 20 FEB 2025 to 20 MAR 2025

SW-3, 20 FEB 2025 to 20 MAR 2025