

TACAN RWY 30

TACAN NSI Chan 39	APCH CRS 292°	Rwy ldg TDZE Arprt Elev 10,002 506 506	AL-51 62 [USN]	SAN NICOLAS ISLAND NOLF (KNSI)
-----------------------------	-------------------------	--	----------------	--------------------------------

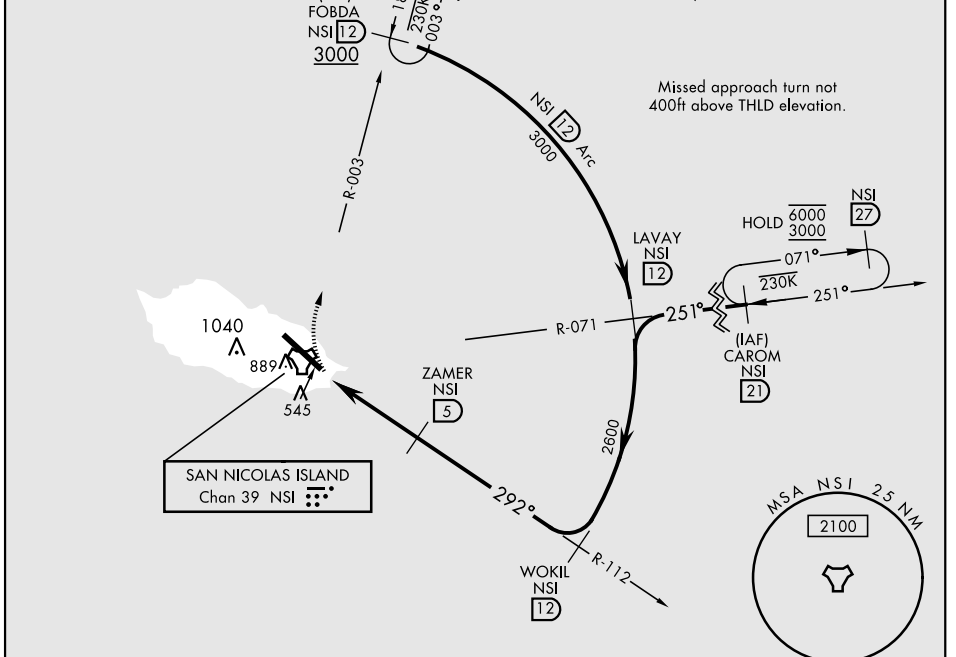
RADAR required. MISSED APPROACH: Climbing right turn to 3000, intcp the NSI TACAN R-003 to FOBDA and hold.

▼ *Circling not authorized W of Rwy 12-30.

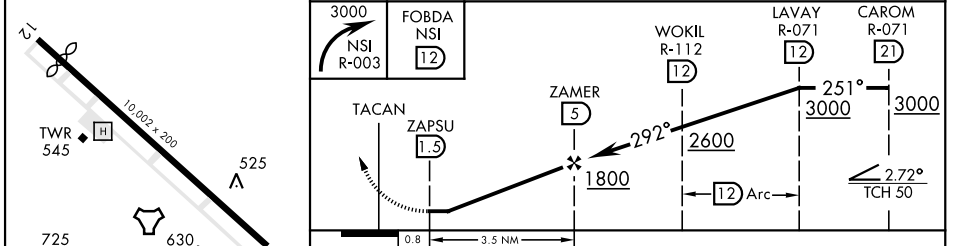
TOWER ★
126.85 379.3

CAUTION: FAC 258° from RCL at 3000 from thld.	Knots	60	120	180	240	300	360
	V/V(fpm)	222	444	666	888	1110	1332

Minimum climb of 222 ft/NM to 1300



ELEV 506	TDZE 506	EMERG SAFE ALT 100 NM 10,900
----------	----------	------------------------------



	3000 NSI R-003	FOBDA NSI 12	WOKIL R-112 NSI 12	LAVAY R-071 NSI 12	CAROM R-071 NSI 21
	TACAN	ZAPSU NSI 1.5	ZAMER NSI 5	1800	2600
	0.8	3.5 NM			
CATEGORY	A	B	C	D	E
S-30	820-1		314	(400-1)	
CIRCLING*	860-1 354 (400-1)	960-1 454 (500-1)	960-1½ 454 (500-1½)	1060-2	554 (600-2)

TACAN RWY 30

SW-3, 20 FEB 2025 to 20 MAR 2025

SW-3, 20 FEB 2025 to 20 MAR 2025