

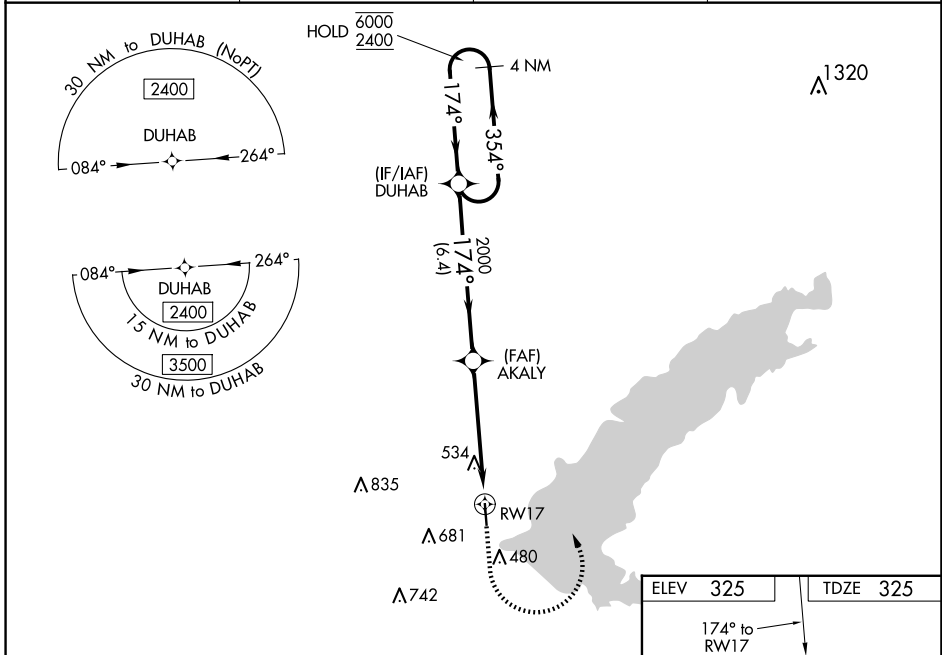
WAAS CH 69231 W17A	APP CRS 174°	Rwy Idg TDZE 325 Apt Elev 325	4444
--	------------------------	---	-------------

RNAV (GPS) RWY 17

BRUCE CAMPBELL FLD (MBO)

RNP APCH.	<p>▼ Baro-VNAV and VDP NA when using Jackson-Medgar Wiley Evers Intl altimeter setting. ▲ Rwy 17 helicopter visibility reduction below $\frac{3}{4}$ SM NA. For uncompensated Baro-VNAV systems, LNAV/VNAV NA below -15°C or above 54°C. When local altimeter setting not received, use Jackson-Medgar Wiley Evers Intl altimeter setting and increase all DA 21 feet and all MDA 40 feet, and increase LNAV/VNAV visibility $\frac{1}{8}$ SM, and Circling Cats C/D visibility $\frac{1}{2}$ mile.</p>	MISSED APPROACH: Climb to 1200 then climbing left turn to 2400 direct DUHAB and hold.
-----------	---	---

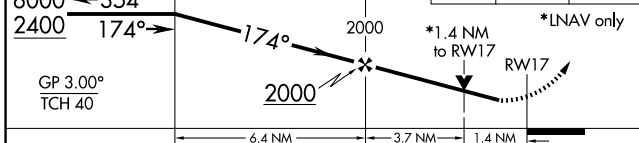
AWOS-3PT 119.125	JACKSON APP CON ★ 123.9 317.7	CLNC DEL 125.9	UNICOM 122.8 (CTAF) 0
----------------------------	---	--------------------------	---------------------------------



SC-4, 20 FEB 2025 to 20 MAR 2025

SC-4, 20 FEB 2025 to 20 MAR 2025

4 NM Holding Pattern DUHAB	1200	2400	DUHAB
----------------------------	------	------	-------



CATEGORY	A	B	C	D
LPV DA	600- $\frac{7}{8}$		275 (300- $\frac{7}{8}$)	
LNAV/VNAV DA	832-1 $\frac{3}{8}$		507 (600-1 $\frac{3}{8}$)	
LNAV MDA	800-1	475 (500-1)	800-1 $\frac{3}{8}$	475 (500-1 $\frac{3}{8}$)
CIRCLING	820-1	840-1	1040-2	1040-2 $\frac{1}{4}$
	495 (500-1)	515 (600-1)	715 (800-2)	715 (800-2 $\frac{1}{4}$)

