

WAAS CH 72631 W35A	APP CRS 354°	Rwy Idg TDZE 324 Apt Elev 325	4444
--	------------------------	---	-------------

RNAV (GPS) RWY 35

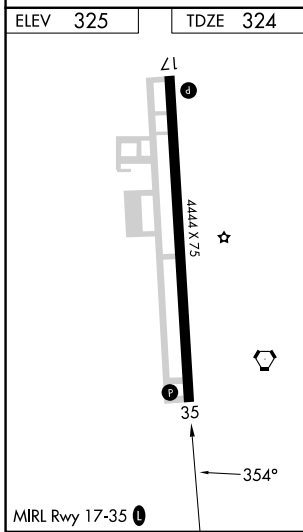
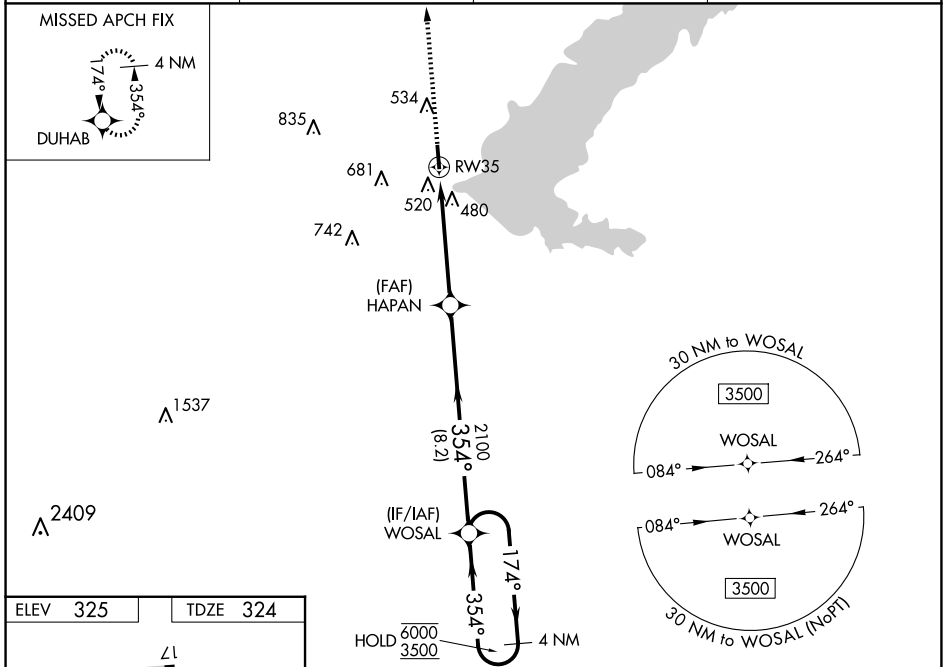
BRUCE CAMPBELL FLD (MBO)

RNP APCH - GPS.

⚠ Rwy 35 helicopter visibility reduction below 3/4 SM NA.
For uncompensated Baro-VNAV systems, LNAV/VNAV NA below -15°C or above 54°C.

⚠ MISSED APPROACH:
Climb to 2400 direct DUHAB and hold.

AWOS-3PT 119.125	JACKSON APP CON ★ 123.9 317.7	CLNC DEL 125.9	UNICOM 122.8 (CTAF) 0
----------------------------	---	--------------------------	---------------------------------



2400 DUHAB VGSI and RNAV glidepath not coincident (VGSI Angle 4.00/TCH 54).

4 NM Holding Pattern WOSAL

HAPAN 2100

174° → 6000
← 354° 3500

1 NM to RW35

354°

2100

1 NM 4 NM 8.2 NM

GP 3.30°
TCH 48

CATEGORY	A	B	C	D
LPV DA	643-7/8 319 (400-7/8)			
LNAV/VNAV DA	760-1 1/4 436 (500-1 1/4)			
LNAV MDA	780-1	456 (500-1)	780-1 3/8	456 (500-1 3/8)
C CIRCLING	820-1 495 (500-1)	840-1 515 (600-1)	1040-2 715 (800-2)	1040-2 1/4 715 (800-2 1/4)

SC-4, 20 FEB 2025 to 20 MAR 2025

SC-4, 20 FEB 2025 to 20 MAR 2025