

LOC I-ASG <b>110.9</b>	APP CRS <b>183°</b>	Rwy Idg TDZE Apt Elev	<b>4939</b> <b>1351</b> <b>1353</b>
---------------------------	------------------------	-----------------------------	---

AL-5165 (FAA)

# ILS or LOC RWY 18

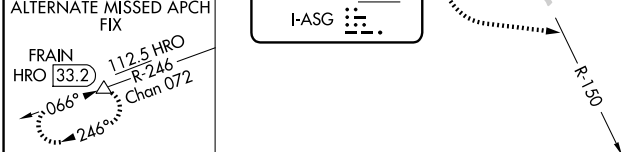
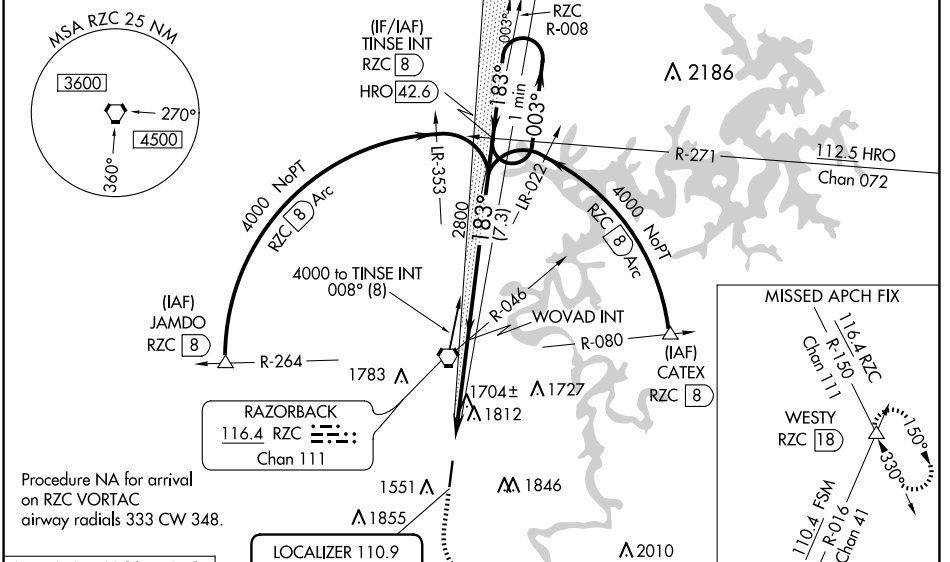
SPRINGDALE MUNI (ASG)

**⚠** Circling NA east of Rwy 18-36. Rwy 18 helicopter visibility reduction below 3/4 SM NA. Autopilot coupled approach NA below 1900. For inop ALS, increase S-ILS 18 visibility to 3/8 SM.

**MALSF**

**MISSED APPROACH:** Climb to 2300 then climbing left turn to 4000 on heading 120° and RZC VORTAC R-150 to WESTY INT/RZC 18 DME and hold.

AWOS-3 <b>124.675</b>	RAZORBACK APP CON* <b>126.6 305.2</b>	SPRINGDALE TOWER* <b>118.2 (CTAF) 0</b>	GND CON <b>121.6</b>	REIL 18, 36 <b>122.8 0</b>	UNICOM <b>122.95</b>
--------------------------	--	--	-------------------------	-------------------------------	-------------------------



2300	4000	WESTY	
↑	hdg 120°	△	
	RZC R-150		

ELEV 1353	TDZE 1351
183° 4.5 NM from FAF	
81	
5002x76	
TWR 1436	
36	
REIL Rwy 18, 36	0
HIRL Rwy 18-36	0
FAF to MAP 4.5 NM	
Knots	60 90 120 150 180
Min:Sec	4:30 3:00 2:15 1:48 1:30

CATEGORY	A	B	C	D
S-ILS 18		1605-3/4	254 (300-3/4)	
S-LOC 18	1960-3/4	609 (700-3/4)	1960-1 1/2	609 (700-1 1/2)
CIRCLING	1960-1 607 (700-1)	2000-1 647 (700-1)	2020-1 3/4 667 (700-1 3/4)	2220-2 3/4 867 (900-2 3/4)

SC-1, 20 FEB 2025 to 20 MAR 2025

SC-1, 20 FEB 2025 to 20 MAR 2025