

WAAS Ch 70312 W18A	APP CRS 183°	Rwy Idg 4939 TDZE 1351 Apt Elev 1353
--	------------------------	---

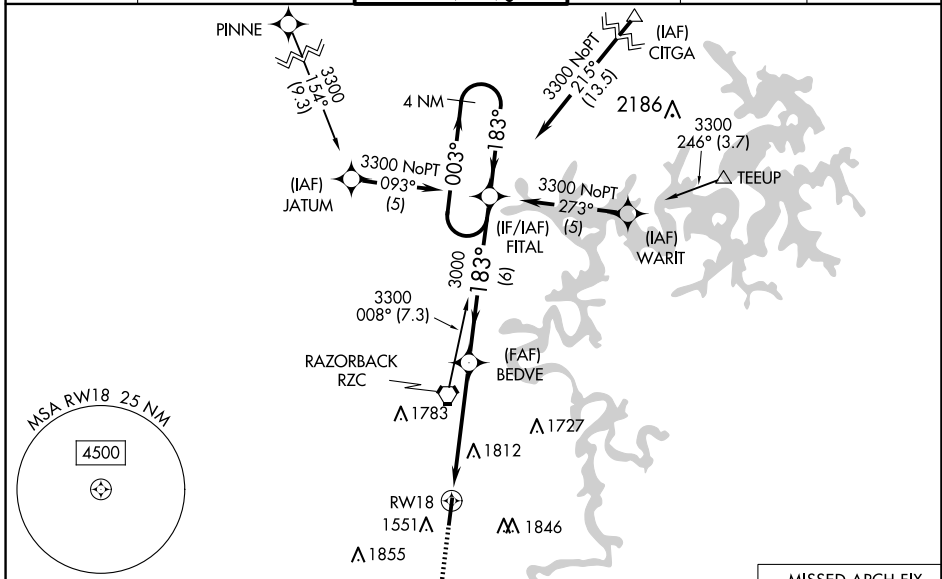
RNAV (GPS) RWY 18

SPRINGDALE MUNI (ASG)

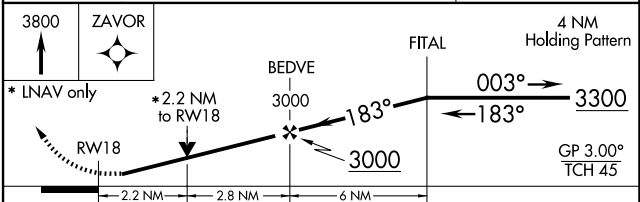
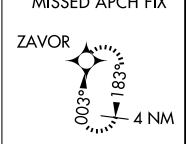
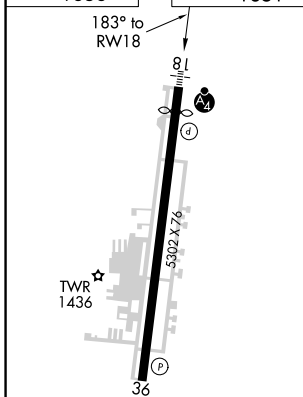
NA DME/DME RNP-0.3 NA. Circling NA east of Rwy 18-36. When local altimeter setting not received, use Fayetteville/Drake Fld altimeter setting and increase all DA 39 feet and all MDA 40 feet; increase LPV all Cats and LNAV Cat C/D visibility $\frac{1}{8}$ mile, Circling Cat C/D visibility $\frac{1}{4}$ mile. For inoperative MALSf, increase LPV all Cats visibility to 1 mile, LNAV Cat C/D visibility to 2 miles. For inoperative MALSf when using Fayetteville/Drake Fld altimeter setting, increase LPV all Cats visibility to $1\frac{1}{8}$ mile, LNAV Cat C visibility to $2\frac{1}{4}$ mile. VDP NA when using Fayetteville/Drake Fld altimeter setting. Helicopter visibility reduction below $\frac{3}{4}$ SM NA.

MALSf
 MISSED APPROACH: Climb to 3800 direct ZAVOR and hold.

AWOS-3 124.675	RAZORBACK APP CON * 126.6 305.2	SPRINGDALE TOWER * 118.2 (CTAF)	GND CON 121.6	REIL 18, 36 122.8	UNICOM 122.95
--------------------------	---	---	-------------------------	-----------------------------	-------------------------



ELEV 1353	TDZE 1351
------------------	------------------



CATEGORY	A	B	C	D
LPV DA		1642- $\frac{3}{4}$ 291 (300- $\frac{3}{4}$)		
LNAV/VNAV DA	NA			
LNAV MDA	2080- $\frac{3}{4}$ 729 (800- $\frac{3}{4}$)	2080-1 729 (800-1)	2080-1 $\frac{7}{8}$ 729 (800-1 $\frac{7}{8}$)	2220-2 $\frac{3}{4}$ 867 (900-2 $\frac{3}{4}$)
C CIRCLING	2080-1 727 (800-1)		2080-2 727 (800-2)	

REIL Rwy 18, 36 **1**
HIRL Rwy 18-36 **1**

SC-1, 20 FEB 2025 to 20 MAR 2025

SC-1, 20 FEB 2025 to 20 MAR 2025