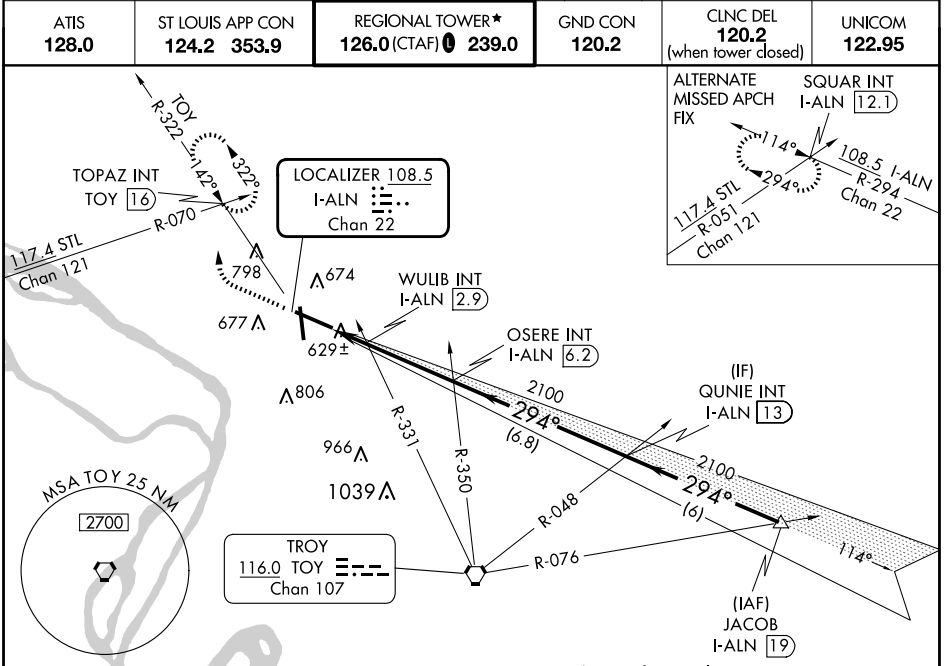


LOC/DME I-ALN 108.5 Chan 22	APP CRS 294°	Rwy Idg TDZE Apt Elev	8099 531 544
--	------------------------	-----------------------------	---

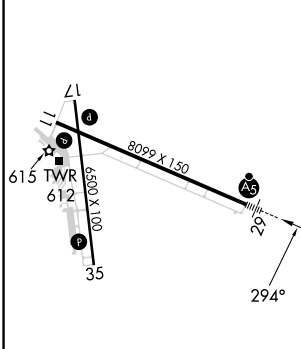
ILS or LOC RWY 29

ST LOUIS RGNL (ALN)

<p>For inop ALS, increase WULIB fix minimums S-LOC 29 Cats C/D visibility to 1 SM.</p>	<p>MALS R</p>	<p>MISSED APPROACH: Climb to 1000 then climbing right turn to 2200 on heading 310° and on TOY VORTAC R-322 to TOPAZ INT/TOY 16 DME and hold.</p>			
			<p>ATIS 128.0</p>	<p>ST LOUIS APP CON 124.2 353.9</p>	<p>REGIONAL TOWER* 126.0 (CTAF) 0 239.0</p>



ELEV 544	D	TDZE 531
----------	----------	----------



REIL Rwy 11	HIRL Rwy 11-29	MIRL Rwy 17-35			
FAF to MAP 4.8 NM					
Knots	60	90	120	150	180
Min:Sec	4:48	3:12	2:24	1:55	1:36

Procedure NA for arrivals at JACOB on V12 northeast bound.				
	TOY R-322	TOPAZ INT	*LOC only.	
	OSERE INT I-ALN 6.2	QUNIE INT I-ALN 13	JACOB I-ALN 19	
	I-ALN 1.5	WULIB INT I-ALN 2.9	2100	2100
	1.4 NM	3.3 NM	6.8 NM	6 NM
CATEGORY	A	B	C	D
S-ILS 29	731-1/2 200 (200-1/2)			
S-LOC 29	980-1/2	449 (500-1/2)	980-7/8	449 (500-7/8)
CIRCLING	1000-1	456 (500-1)	1160-13/4	1200-2
			616 (700-13/4)	656 (700-2)
WULIB FIX MINIMUMS (DUAL VOR RECEIVERS OR DME REQUIRED)				
S-LOC 29	880-1/2	349 (400-1/2)	880-5/8	349 (400-5/8)
CIRCLING	1000-1	456 (500-1)	1160-13/4	1200-2
			616 (700-13/4)	656 (700-2)

EC-3, 20 FEB 2025 to 20 MAR 2025

EC-3, 20 FEB 2025 to 20 MAR 2025