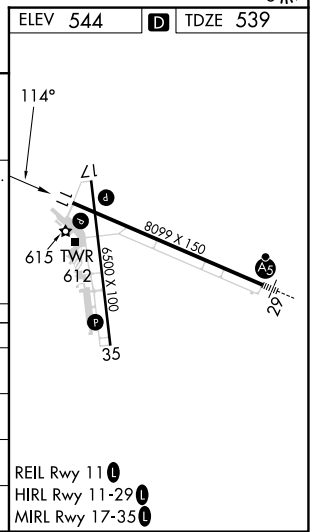
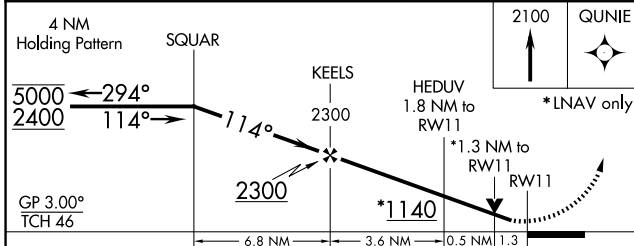
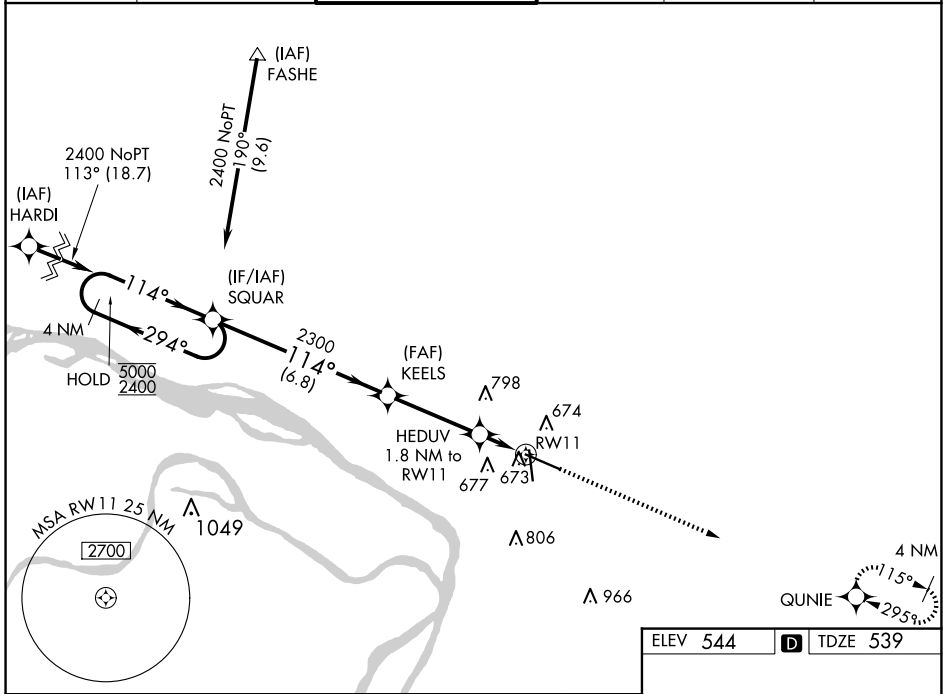


| | | | |
|--|------------------------|---|-------------|
| WAAS CH 90417 W11A | APP CRS 114° | Rwy Idg TDZE 539 Apt Elev 544 | 8099 |
|--|------------------------|---|-------------|

RNAV (GPS) RWY 11

ST LOUIS RGNL (A.L.N)

| | | | |
|--|--|---|-------------------------|
| RNP APCH. | | MISSED APPROACH: Climb to 2100 direct QUNIE and hold. | |
| <p>▼ Rwy 11 helicopter visibility reduction below ¼ SM NA. ▲ For uncompensated Baro-VNAV systems, LNAV/VNAV NA below -16°C or above 54°C.</p> | | | |
| ATIS 128.0 | ST LOUIS APP CON 124.2 353.9 | REGIONAL TOWER* 126.0(CTAF) 239.0 | GND CON 120.2 |
| | | CLNC DEL 120.2 (when tower closed) | UNICOM 122.95 |



| CATEGORY | A | B | C | D |
|--------------|--------|-------------|-----------------|-----------------|
| LPV DA | | 794-7/8 | 255 (300-7/8) | |
| LNAV/VNAV DA | | 881-1 1/8 | 342 (400-1 1/8) | |
| LNAV MDA | 980-1 | 441 (500-1) | 980-1 3/8 | 441 (500-1 3/8) |
| CIRCLING | 1000-1 | 456 (500-1) | 1160-1 3/4 | 1200-2 |
| | | | 616 (700-1 3/4) | 656 (700-2) |

EC-3, 20 FEB 2025 to 20 MAR 2025

EC-3, 20 FEB 2025 to 20 MAR 2025