

LOC/DME I- <b>LER</b>	APP CRS	Rwy Idg	<b>7100</b>
<b>109.7</b>	<b>340°</b>	TDZE	<b>1232</b>
Chan <b>34</b>		Apt Elev	<b>1232</b>

# ILS or LOC/DME RWY 34

BRainerd LAKES RGNL (BRD)

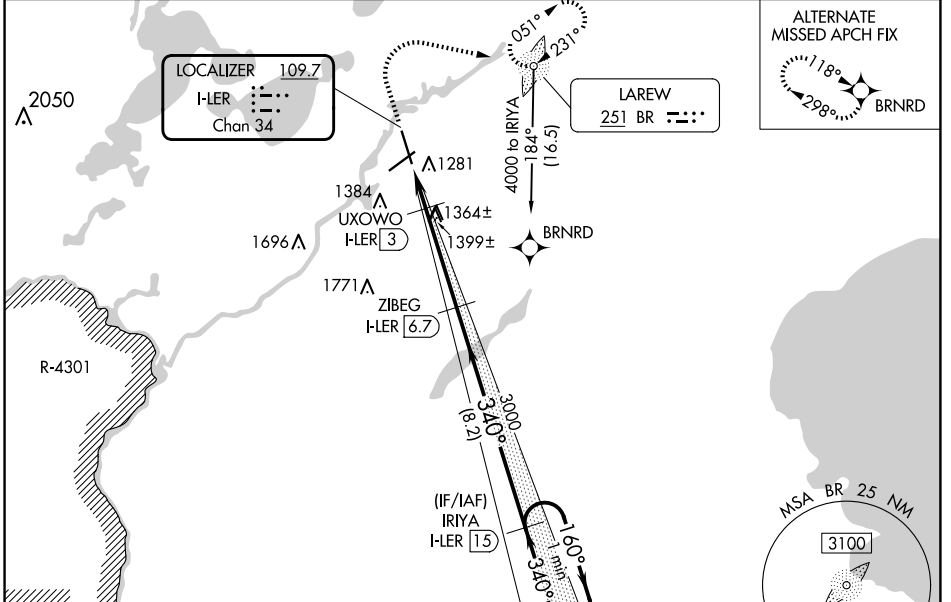
DME required. ADF required.  
 RNP APCH-GPS. from GOLLF.

**MALS**

**MISSED APPROACH:** Climb to 1700 then climbing right turn to 4000 direct BR LOM, continue climb-in-hold to 4000.

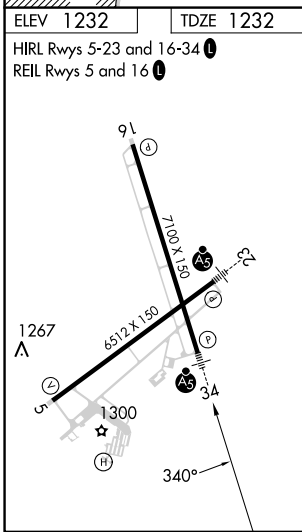
**NA** VDP NA with Aikin altimeter setting. When local altimeter setting not received, use Aikin altimeter setting: increase all DA to 1484; increase all MDAs 60 feet and visibility S-LOC 34 Cat C/D ¼ SM and visibility Circling Cat D ¼ SM.

ASOS <b>126.775</b>	MINNEAPOLIS CENTER <b>118.05 239.0</b>	UNICOM <b>122.7(CTAF) 0</b>
------------------------	---	--------------------------------



NC-1, 20 FEB 2025 to 20 MAR 2025

NC-1, 20 FEB 2025 to 20 MAR 2025



1700	4000	BR	ZIBEG I- <b>LER</b> [6.7]	IRIYA I- <b>LER</b> [15]	One Minute Holding Pattern
*LOC only		UXOWO I- <b>LER</b> [3]	3000	340°	160° → 4000
I- <b>LER</b> [1.3]	*I- <b>LER</b> [2.4]		1820*	3000	← 340°
1.1 NM		0.6	3.7 NM	8.2 NM	GS 3.00° TCH 46
CATEGORY	A	B	C	D	
S-ILS 34	1432-½		200 (200-½)		
S-LOC 34	1620-½		388 (400-½)		1620-⅝ 388 (400-⅝)
<b>C</b> CIRCLING	1760-1 528 (600-1)		1760-1½ 528 (600-1½)		1860-2 628 (700-2)