

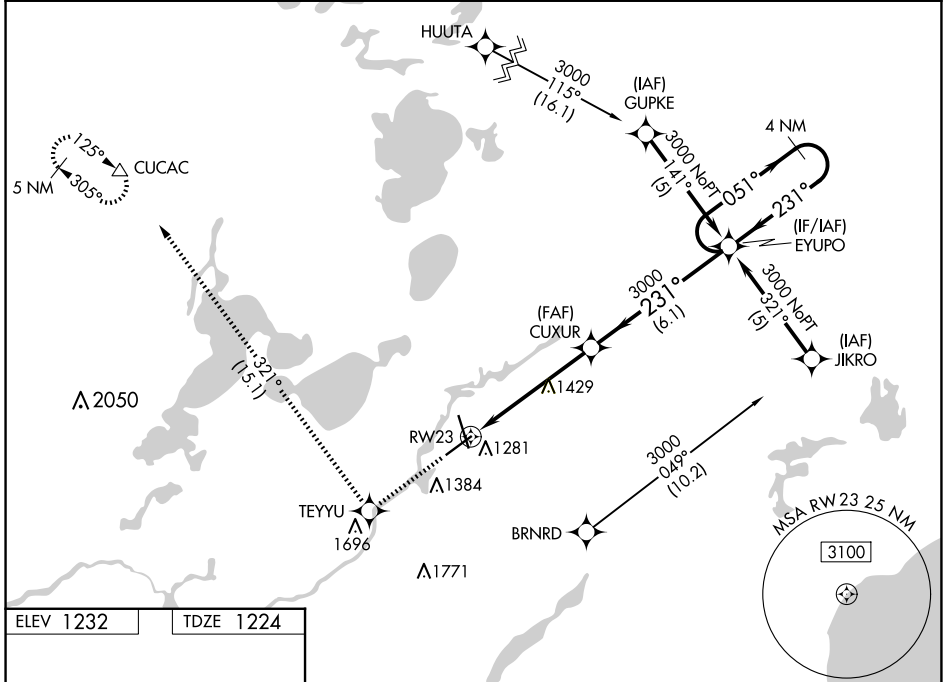
|  |                        |   |
|--|------------------------|---|
| WAAS<br>CH <b>82502</b><br><b>W23A</b> | APP CRS<br><b>231°</b> | Rwy Idg<br>TDZE <b>1224</b><br>Apt Elev <b>1232</b> |
|--|------------------------|---|

# RNAV (GPS) RWY 23

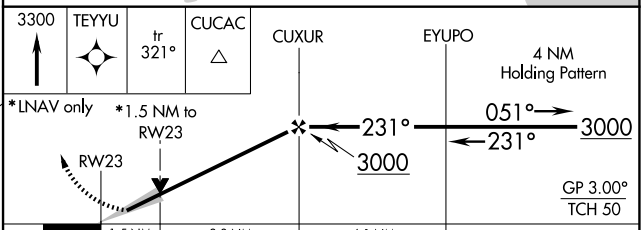
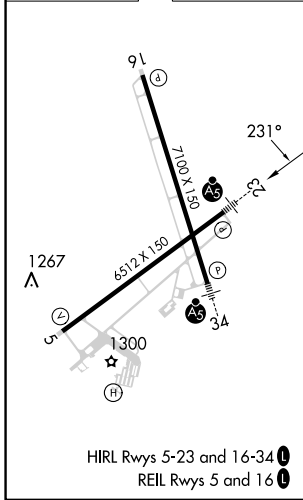
BRainerd LAKES RGNL (BRD)

|  |           |   |
|--|-----------|---|
| RNP APCH.<br>▼ For uncompensated Baro-VNAV systems, LNAV/VNAV NA below -17°C or above 54°C. Baro-VNAV and VDP NA when using Aikiri altimeter setting. When local altimeter setting not received, use Aikiri altimeter setting and increase all DAs 52 feet and all MDAs 60 feet. | MALSR<br> | MISSED APPROACH: Climb to 3300 direct TEYU and on track 321° to CUCAC and hold. |
|--|-----------|---|

|                        |   |  |
|------------------------|---|--|
| ASOS<br><b>126.775</b> | MINNEAPOLIS CENTER<br><b>118.05 239.0</b> | UNICOM<br><b>122.7</b> (CTAF) <b>1</b> |
|------------------------|---|--|



|           |           |
|-----------|-----------|
| ELEV 1232 | TDZE 1224 |
|-----------|-----------|



| CATEGORY     | A        | B             | C                             | D                             |
|--------------|----------|---------------|-------------------------------|-------------------------------|
| LPV DA       |          | 1501-1/2      | 277 (300-1/2)                 |                               |
| LNAV/VNAV DA |          | 1573-3/4      | 349 (400-3/4)                 |                               |
| LNAV MDA     | 1760-1/2 | 536 (600-1/2) | 1760-1<br>536 (600-1)         | 1760-1 1/4<br>536 (600-1 1/4) |
| CIRCLING     | 1760-1   | 528 (600-1)   | 1760-1 1/2<br>528 (600-1 1/2) | 1860-2<br>628 (700-2)         |

NC-1, 20 FEB 2025 to 20 MAR 2025

NC-1, 20 FEB 2025 to 20 MAR 2025