

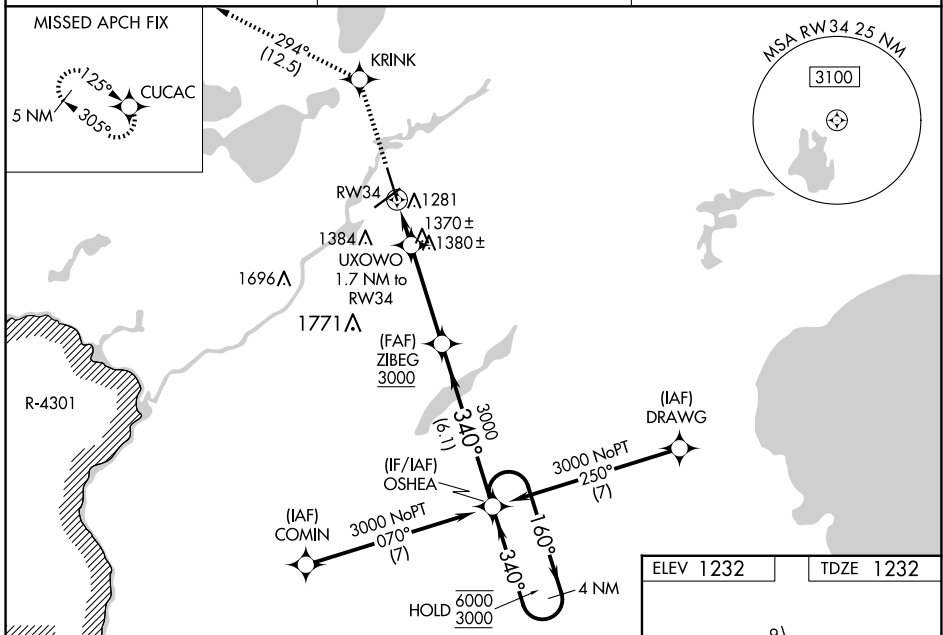
WAAS CH 70711 W34A	APP CRS 340°	Rwy Idg 7100 TDZE 1232 Apt Elev 1232
--	------------------------	---

RNAV (GPS) RWY 34

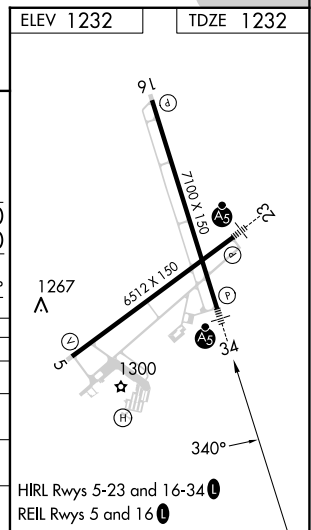
BRAINERD LAKES RGNL (BRD)

RNP APCH - GPS.		MALSR
<p>⚠ For uncompensated Baro-VNAV systems, LNAV/VNAV NA below -21°C or above 54°C. Baro-VNAV and VDP NA when using AIT altimeter setting. When local altimeter setting not received, use AIT altimeter setting and increase LPV DA to 1484 feet; increase LNAV/VNAV DA to 1578 feet and all visibilities 1/8 SM. Increase all MDAs 60 feet and LNAV visibility Cat C/D 1/4 SM. For inop ALS when using AIT altimeter setting, increase LNAV/VNAV all Cats visibility to 1 SM. For inop ALS increase LNAV/VNAV all Cats visibility to 7/8 SM.</p>		<p>MISSED APPROACH: Climb to 3300 direct KRINK and on 294° track to CUCAC and hold.</p>

ASOS 126.775	MINNEAPOLIS CENTER 118.05 239.0	UNICOM 122.7 (CTAF) 1
------------------------	---	---------------------------------



3300	KRINK	tr 294°	CUCAC	ZIBEG	OSHEA	4 NM Holding Pattern
UXOWO 1.7 NM to RWY 34		1820		3000	160° → 6000	← 340° 3000
RWY 34 1.1 NM to RWY 34		0.6 NM		3.7 NM	6.1 NM	GP 3.00° TCH 47
CATEGORY	A	B	C	D		
LPV DA	1432-1/2		200 (200-1/2)			
LNAV/VNAV DA	1526-1/2		294 (300-1/2)			
LNAV MDA	1620-1/2 388 (400-1/2)		1620-5/8 388 (400-5/8)			
C CIRCLING	1760-1 528 (600-1)		1760-1 1/2 528 (600-1 1/2)		1840-2 608 (700-2)	



NC-1, 20 FEB 2025 to 20 MAR 2025

NC-1, 20 FEB 2025 to 20 MAR 2025