

WAAS CH 82018 W05A	APP CRS 050°	Rwy Idg TDZE Apt Elev	6512 1224 1232
--	------------------------	-----------------------------	---

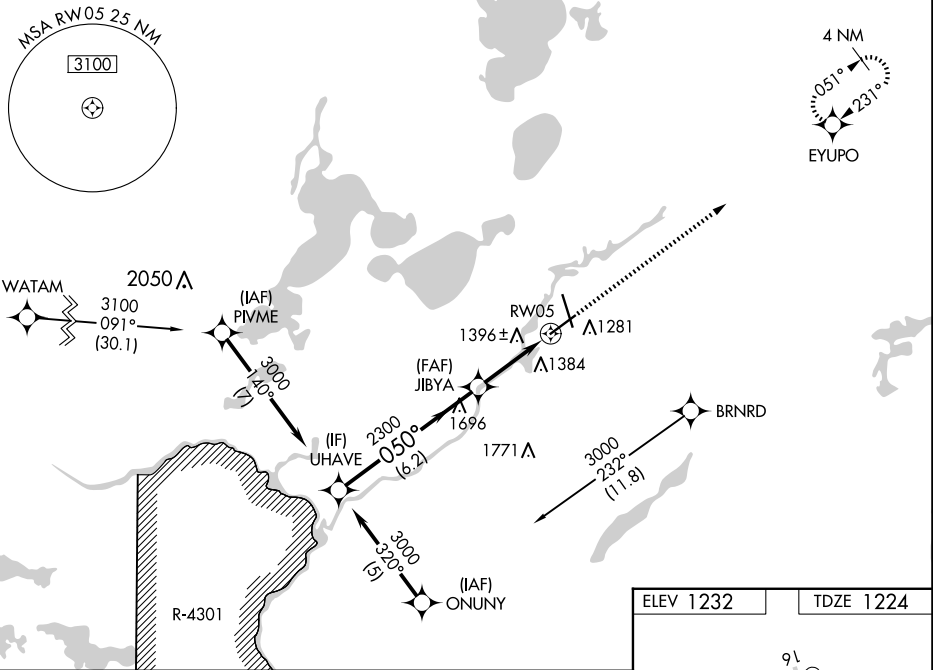
RNAV (GPS) RWY 5

BRAINERD LAKES RGNL (BRD)

⚠ Baro-VNAV NA when using Aikiri altimeter setting. DME/DME RNP-0.3 NA. Procedure NA when R-4301 is active. For uncompensated Baro-VNAV systems, LNAV/VNAV NA below -17°C (2°F) or above 54°C (130°F). When local altimeter setting not received, use Aikiri altimeter setting and increase all DA 52 feet and all MDA 60 feet, increase LPV and LNAV/VNAV visibility ¼ mile all Cats, and LNAV Cats C and D visibility ¼ mile. VDP NA with Aikiri altimeter setting.

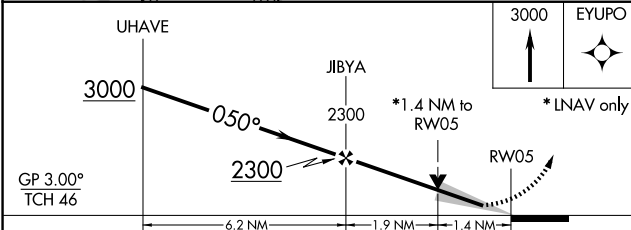
MISSED APPROACH: Climb to 3000 direct EYUPO and hold.

ASOS 126.775	MINNEAPOLIS CENTER 118.05 239.0	UNICOM 122.7(CTAF) 0
------------------------	---	--------------------------------

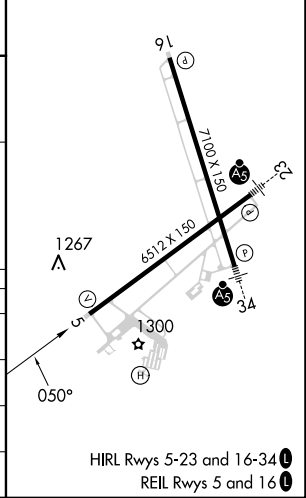


NC-1, 20 FEB 2025 to 20 MAR 2025

NC-1, 20 FEB 2025 to 20 MAR 2025



ELEV 1232	TDZE 1224
-----------	-----------



CATEGORY	A	B	C	D
LPV DA		1424-¾	200 (200-¾)	
LNAV/VNAV DA		1777-2	553 (600-2)	
LNAV MDA	1700-1	476 (500-1)	1700-1½ 476 (500-1½)	1700-1½ 476 (500-1½)
C CIRCLING	1760-1	528 (600-1)	1760-1½ 528 (600-1½)	1860-2 628 (700-2)