

FORT NOVOSHEL, ALABAMA

COPTER RNAV (GPS) RWY 17

| | | |
|----------|-----------|-----|
| APCH CRS | Rwy Idg | 476 |
| 176° | TDZE | 318 |
| | Arpt Elev | 318 |

AL-5183 [USA]

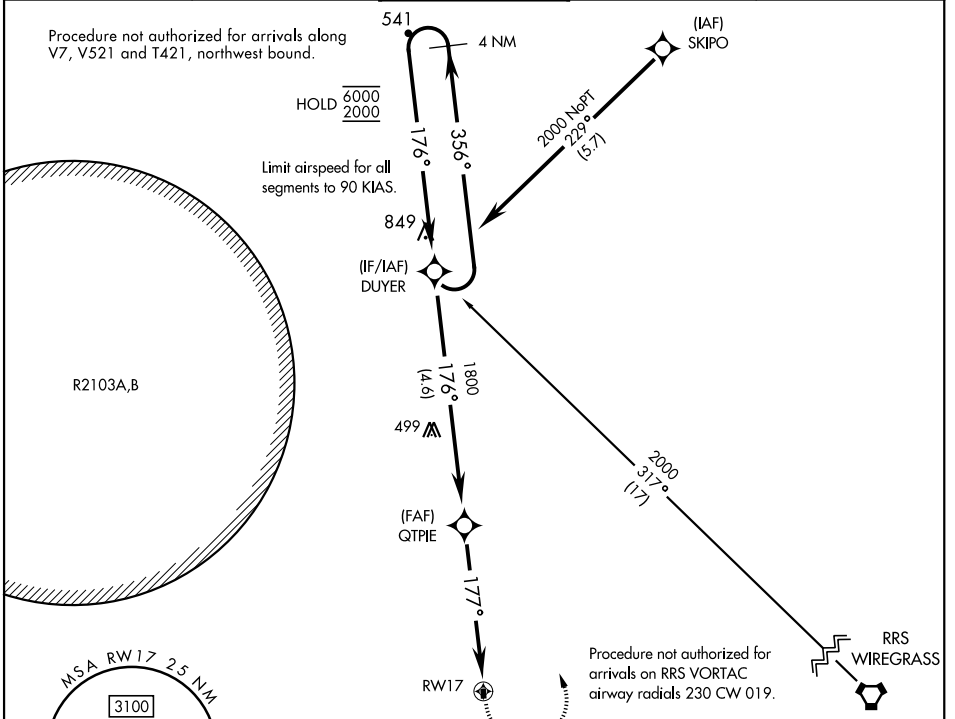
HANCHEY AHP (STRIP) (KHEY)

RNP APCH - GPS

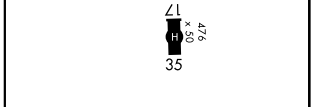
▼ Use CAIRNS altimeter setting, when not received,
▲ use LOWE altimeter setting.

MISSED APPROACH: Climbing left turn to 2000 direct DUYER and hold.

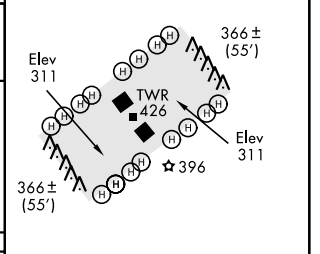
| | | | | |
|---------|----------------|--------------|----------------|-----------------|
| ATIS ★ | CAIRNS APP CON | TOWER ★ | GND CON | CAIRNS CLNC DEL |
| 141.375 | 125.4 327.125 | 140.5 387.85 | 142.55 225.575 | 118.075 380.1 |



| | |
|----------|----------|
| ELEV 318 | TDZE 318 |
|----------|----------|



| | | | |
|-----------------------|--------|--------------|--------|
| 4 NM Holding Pattern. | DUYER | 2000 | DUYER |
| 6000 ← 356° | → 176° | | |
| 2000 | | | |
| | 176° | 1800 | 177° |
| | | 4.6 NM | 3 NM |
| | | 4.52° TCH 40 | |
| | | QTPIE | RWY 17 |



| | | |
|----------|---------|---------------|
| CATEGORY | COPTER | |
| LNAV MDA | 900-1/2 | 582 (600-1/2) |

FORT NOVOSHEL, ALABAMA

31° 21' N-85° 39' W

HANCHEY AHP (STRIP) (KHEY)

Amdt 2 20APR23

COPTER RNAV (GPS) RWY 17

SE-4, 20 FEB 2025 to 20 MAR 2025

SE-4, 20 FEB 2025 to 20 MAR 2025