

WAAS CH 86713 W26B	APP CRS 267°	Rwy Idg 10001 TDZE 790 Apt Elev 794
--	------------------------	--

RNAV (GPS) RWY 26L

GERALD R FORD INTL (G.R.R)

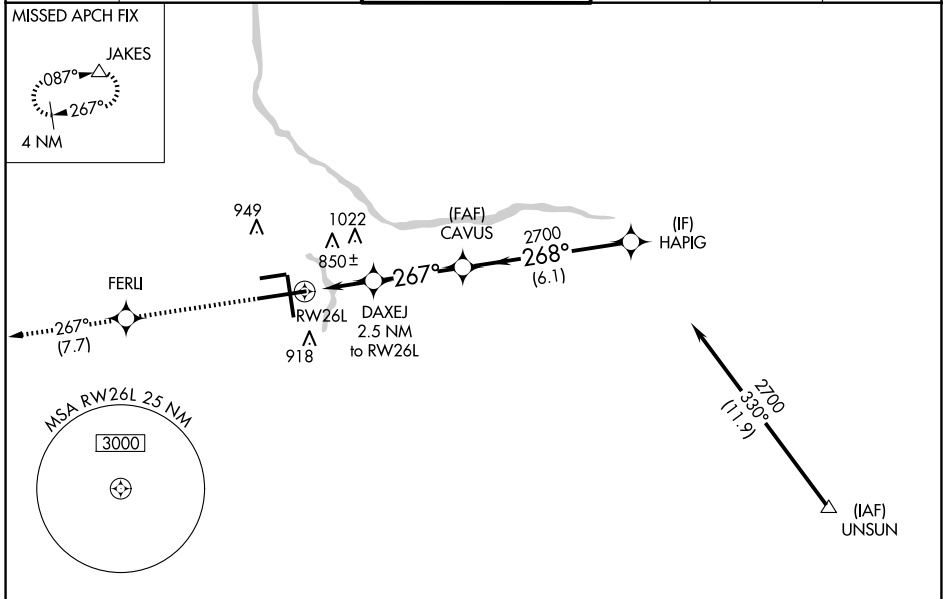
▼ For uncompensated Baro-VNAV systems, LNAV/VNAV NA below -16°C (4°F) or above 54°C (130°F). DME/DME RNP-0.3 NA. For inoperative ALS, increase LNAV/VNAV Cat D visibility to RVR 5000.
**** RVR 1800 authorized with use of FD or AP or HUD to DA.**

MALSR

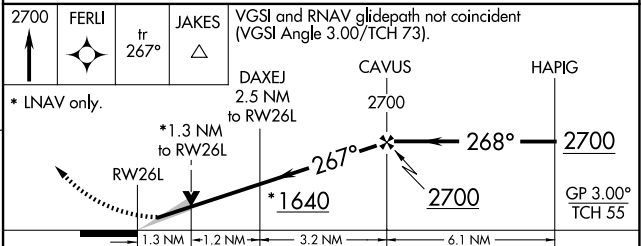
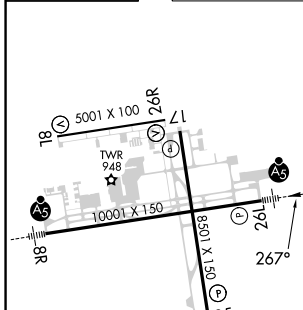


MISSED APPROACH:
Climb to 2700 direct FERLI and track 267° to JAKES and hold.

ATIS 118.725	GREAT LAKES APP CON * 128.4 257.6	GRAND RAPIDS TOWER * 135.65 (CTAF) 339.8	GND CON 121.8	CLNC DEL 119.3	UNICOM 122.95
------------------------	---	--	-------------------------	--------------------------	-------------------------



ELEV 794	D	TDZE 790
----------	----------	----------



CATEGORY	A	B	C	D
LPV DA **	990/24 200 (200-½)			
LNAV/VNAV DA	1114/24 324 (400-½)			1114/40 324 (400-¾)
LNAV MDA	1280/24	490 (500-½)	1280/40 490 (500-¾)	1280/50 490 (500-1)
C CIRCLING	1280-1	486 (500-1)	1340-1½ 546 (600-1½)	1360-2 566 (600-2)

MIRL Rwy 8L-26L **Ⓛ**
 REIL Rwy 8L, 17 and 26R **Ⓛ**
 HIRL Rwy 8R-26L and 17-35 **Ⓛ**

EC-1, 20 FEB 2025 to 20 MAR 2025

EC-1, 20 FEB 2025 to 20 MAR 2025