

KARRR SEVEN DEPARTURE (RNAV)
(KARRR7.KARRR) 29DEC22

LIBERTY, TEXAS
LIBERTY MUNI (T78)

CTAF
122.9
HOUSTON DEP CON
119.7 281.4

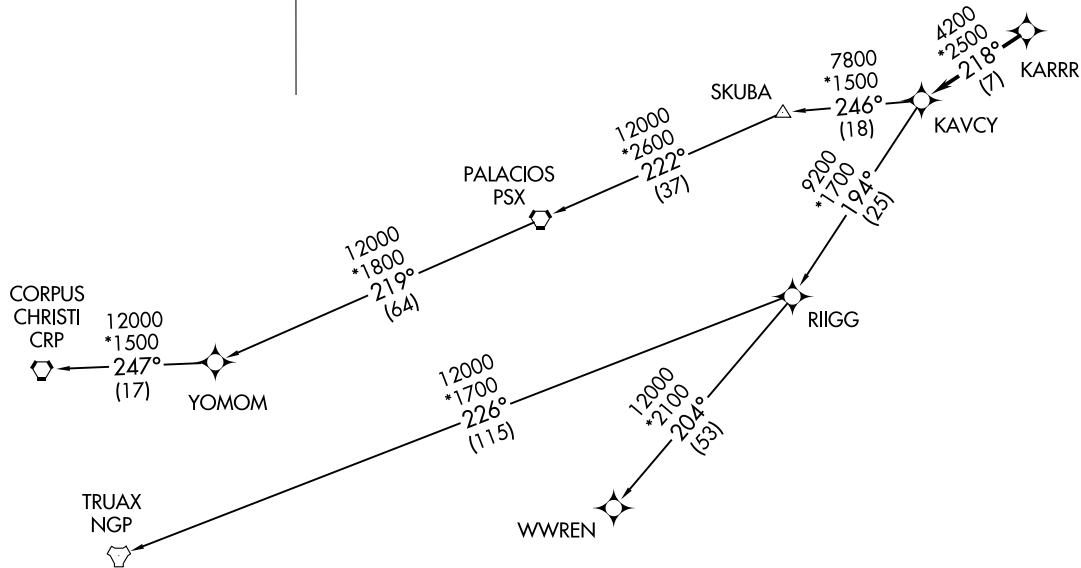
RNAV-1 DME/DME/IRU or GPS.

RADAR required.

TOP ALTITUDE:
ASSIGNED BY ATC

TAKEOFF MINIMUMS

Rwys 16, 34: Standard with minimum climb of 500' per NM to 580.



(NARRATIVE ON FOLLOWING PAGE)

NOTE: Chart not to scale.

(KARRR7.KARRR) 22363
KARRR SEVEN DEPARTURE (RNAV)

LIBERTY, TEXAS
LIBERTY MUNI (T78)

AL-5196 (FAA)

KARRR SEVEN DEPARTURE(RNAV)



DEPARTURE ROUTE DESCRIPTION

TAKEOFF RUNWAY 16: Climb on heading 161° to 1700, for RADAR vectors to KARRR, thence. . . .

TAKEOFF RUNWAY 34: Climb on heading 341° to 1000, for RADAR vectors to KARRR, thence. . . .

. . . .on track 218° to KAVCY, then on (transition). Maintain ATC assigned altitude. Expect filed altitude 10 minutes after departure.

CORPUS CHRISTI TRANSITION (KARRR7.CRP)

PALACIOS TRANSITION (KARRR7.PSX)

TRUAX TRANSITION (KARRR7.NGP)

WWREN TRANSITION (KARRR7.WWREN)

YOMOM TRANSITIOIN (KARRR7.YOMOM)

SC-5, 20 FEB 2025 to 20 MAR 2025

SC-5, 20 FEB 2025 to 20 MAR 2025