

LIBERTY, TEXAS

AL-5196 (FAA)

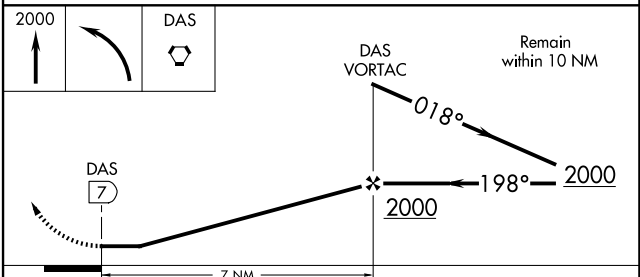
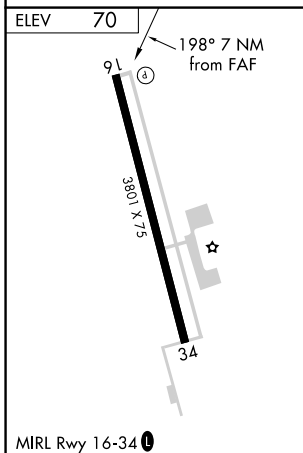
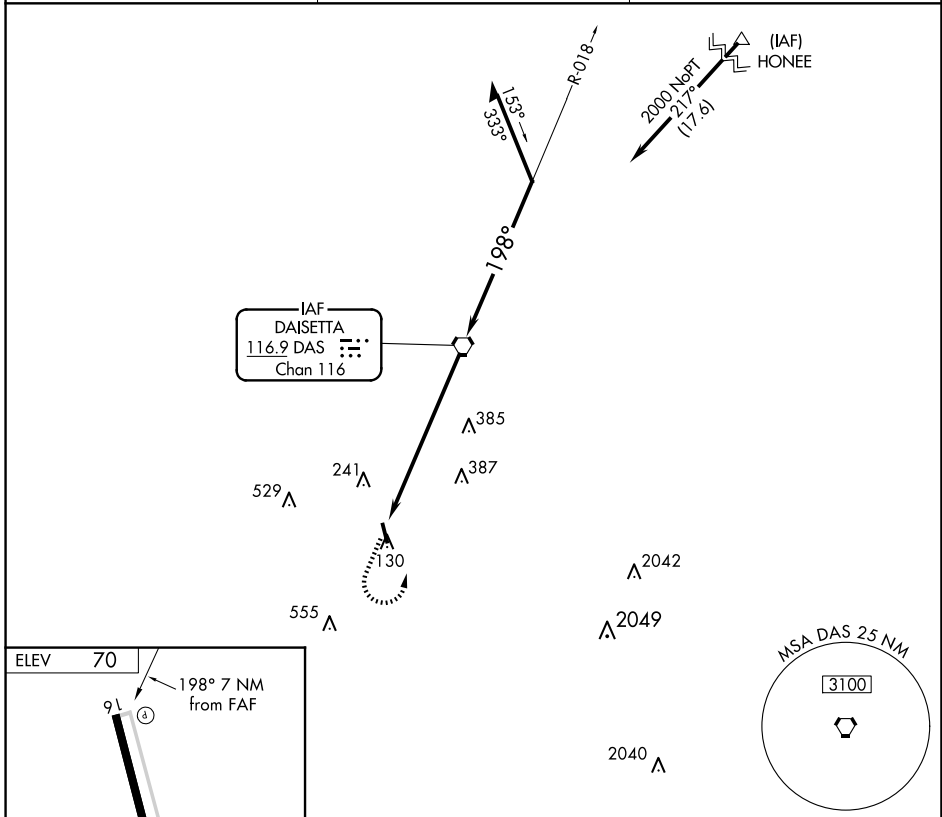
21224

VORTAC DAS <b>116.9</b> Chan <b>116</b>	APP CRS <b>198°</b>	Rwy Idg TDZE Apt Elev	<b>N/A</b> <b>N/A</b> <b>70</b>
---	------------------------	-----------------------------	---------------------------------------

**VOR-A**  
LIBERTY MUNI (T78)

**NA** Use George Bush Intcnl/Houston altimeter setting. Procedure NA at night. Helicopter visibility reduction below 1 SM NA. MISSED APPROACH: Climb to 2000, then left turn direct DAS VORTAC.

AWOS-3PT <b>120.775</b>	HOUSTON APP CON <b>119.7 281.4</b>	CTAF <b>122.9</b>
----------------------------	---------------------------------------	----------------------



FAF to MAP 7 NM						CATEGORY		A	B	C	D
Knots	60	90	120	150	180	CIRCLING		600-1 530 (600-1)		NA	
Min:Sec	7:00	4:40	3:30	2:48	2:20						

LIBERTY, TEXAS  
Amdt 5B 26MAY16

30°05'N-94°42'W

LIBERTY MUNI (T78)  
**VOR-A**

SC-5, 20 FEB 2025 to 20 MAR 2025

SC-5, 20 FEB 2025 to 20 MAR 2025