

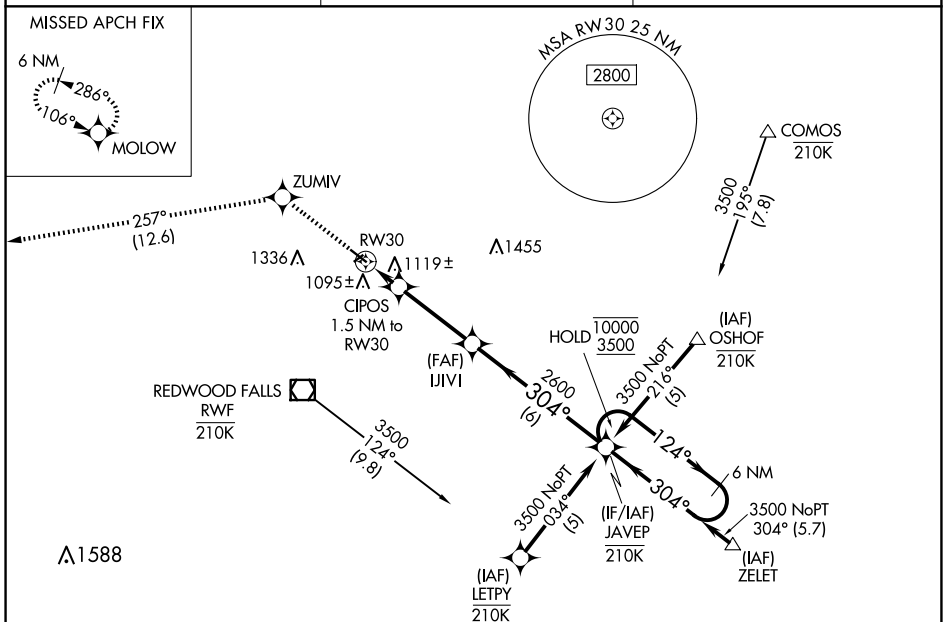
WAAS CH <b>86610</b> W30A	APP CRS <b>304°</b>	Rwy Idg TDZE <b>1024</b> Apt Elev <b>1024</b>	<b>4001</b>
---------------------------------	------------------------	---	-------------

# RNAV (GPS) RWY 30

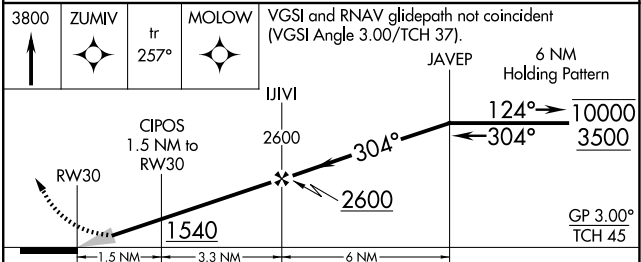
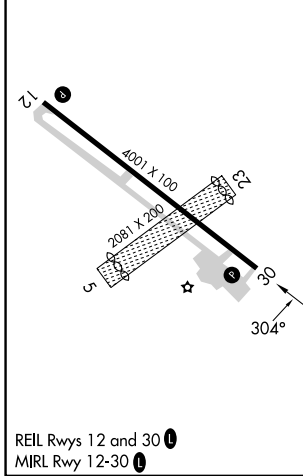
REDWOOD FALLS MUNI (RWF')

RNP APCH - GPS.	MISSED APPROACH: Climb to 3800 direct ZUMIV and on track 257° to MOLOW and hold.
<p>▼ Circling Rwy 5, 12 and 23 NA at night. For uncompensated</p> <p>▲ Baro-VNAV systems, LNAV/VNAV NA below -21°C or above 54°C.</p>	

ASOS <b>126.575</b>	MINNEAPOLIS CENTER <b>127.1 290.2</b>	UNICOM <b>123.0 (CTAF) 0</b>
------------------------	--	---------------------------------



ELEV 1024	TDZE 1024
-----------	-----------



CATEGORY	A	B	C	D
LPV DA		1274- <sup>3</sup> / <sub>4</sub>	250 (300- <sup>3</sup> / <sub>4</sub> )	
LNAV/VNAV DA		1420-1 <sup>1</sup> / <sub>8</sub>	396 (400-1 <sup>1</sup> / <sub>8</sub> )	
LNAV MDA		1380-1	356 (400-1)	
CIRCLING	1480-1 456 (500-1)	1660-1 636 (700-1)	1700-2 676 (700-2)	1700-2 <sup>1</sup> / <sub>4</sub> 676 (700-2 <sup>1</sup> / <sub>4</sub> )

NC-1, 20 FEB 2025 to 20 MAR 2025

NC-1, 20 FEB 2025 to 20 MAR 2025