

WAAS CH <b>72711</b> <b>W13A</b>	APP CRS <b>133°</b>	Rwy Idg TDZE Apt Elev	<b>6504</b> <b>1115</b> <b>1119</b>
--	------------------------	-----------------------------	---

# RNAV (GPS) RWY 13

THIEF RIVER FALLS RGNL (TVF)

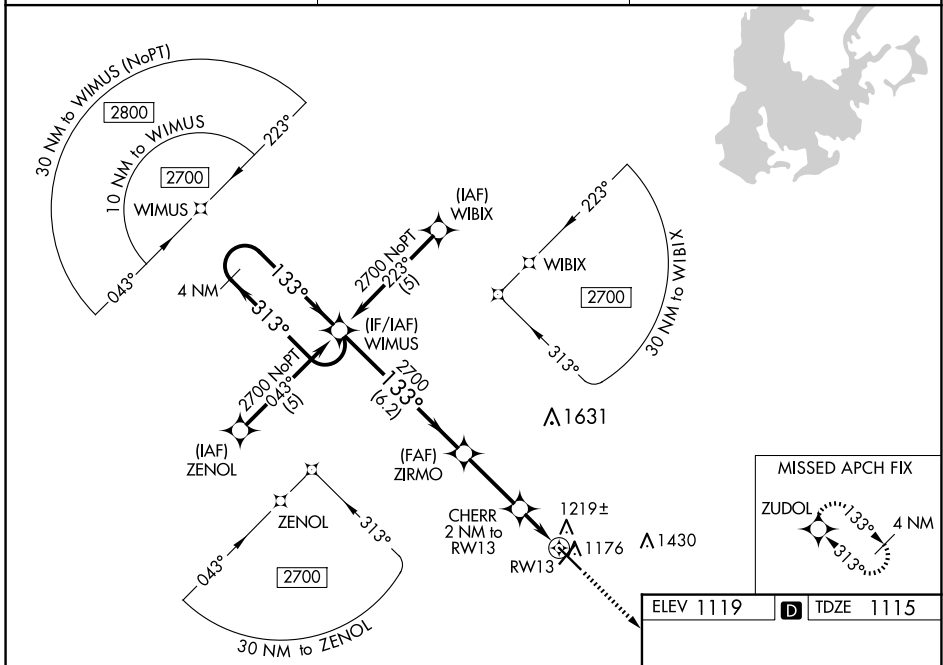
**⚠** Baro-VNAV and VDP NA when using Crookston altimeter setting. For uncompensated Baro-VNAV systems, LNAV/VNAV NA below -17°C (2°F) or above 54°C (130°F). DME/DME RNP-0.3 NA.  
**⚠** When local altimeter setting not received, use Crookston altimeter setting: increase LPV DA to 1447 feet and all visibilities  $\frac{1}{8}$  SM; increase LNAV/VNAV DA to 1518 feet and all visibilities  $\frac{1}{4}$  SM; increase all MDAs 100 feet and visibility Cats C and D  $\frac{3}{8}$  SM.

**MISSED APPROACH:**  
Climb to 2700 direct ZUDOL and hold.

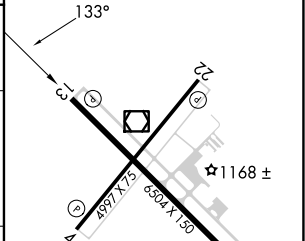
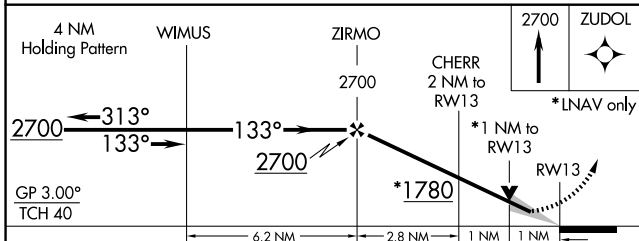
AWOS-3PT  
**119.025**

MINNEAPOLIS CENTER  
**132.15 269.6**

UNICOM  
**122.8 (CTAF) 1**



ELEV 1119 **D** TDZE 1115



CATEGORY	A	B	C	D
LPV DA	1365-1		250 (300-1)	
LNAV/VNAV DA	1436-1¼		321 (400-1¼)	
LNAV MDA	1480-1	365 (400-1)		1480-1¼ 365 (400-1¼)
<b>C</b> CIRCLING	1540-1 421 (500-1)	1580-1 461 (500-1)	1820-2 701 (800-2)	1980-2¾ 861 (900-2¾)

HIRL Rwy 13-31 **1**  
 MRL Rwy 4-22 **1**  
 REIL Rws 4, 13 and 22 **1**

NC-1, 20 FEB 2025 to 20 MAR 2025

NC-1, 20 FEB 2025 to 20 MAR 2025