


WAAS CH 69311 W31A	APP CRS 313°	Rwy Idg TDZE Apt Elev	6304 1114 1119
--	------------------------	-----------------------------	---

RNAV (GPS) RWY 31

THIEF RIVER FALLS RGNL (TVF)

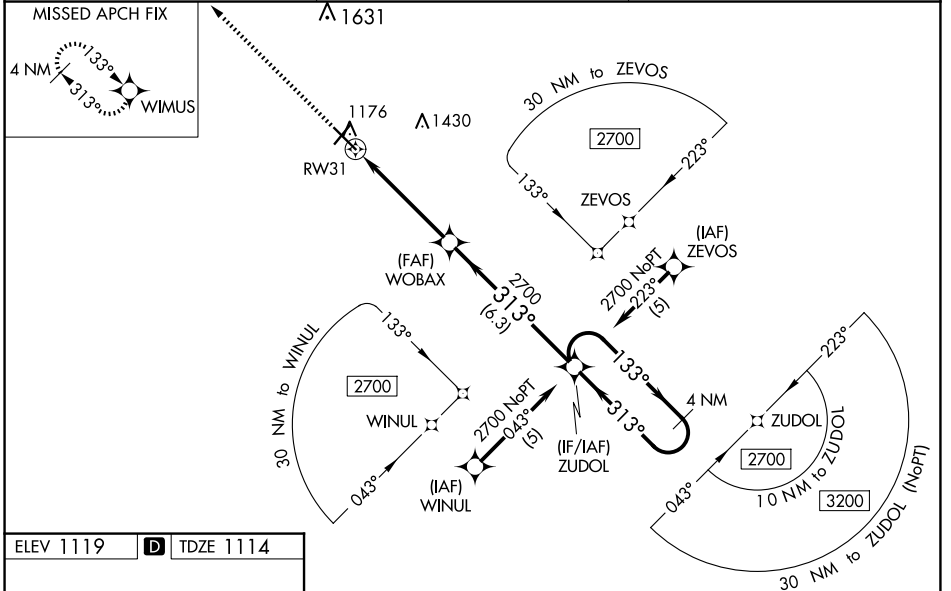
⚠ Baro-VNAV and VDP NA when using Crockston altimeter setting. For uncompensated Baro-VNAV systems, LNAV/VNAV NA below -17°C (2°F) or above 54°C (130°F). DME/DME RNP-0.3 NA. When local altimeter setting not received, use Crockston altimeter setting: increase LPV DA to 1446 feet and all visibilities ½ SM; increase LNAV/VNAV DA to 1510 feet and all visibilities ¾ SM; increase all MDAs 100 feet and visibility Cats C and D ¼ SM. For inoperative MALSRS, increase LNAV Cats C/D visibility to 1½ mile. For inoperative MALSRS, when using Crockston altimeter setting, increase LPV all Cats visibility to 1½ mile, LNAV/VNAV all Cats visibility to 1¼ mile, LNAV Cats C/D visibility to 1½ mile.

MALSRS



MISSED APPROACH:
Climb to 2700 direct WIMUS and hold.

AWOS-3PT 119.025	MINNEAPOLIS CENTER 132.15 269.6	UNICOM 122.8 (CTAF)
----------------------------	---	-------------------------------



ELEV 1119 **D** TDZE 1114

1168 ±

13

22

4

22L

55

313°

HIRL Rwy 13-31 **Ⓛ**

MIRL Rwy 4-22 **Ⓛ**

REIL Rws 4, 13 and 22 **Ⓛ**

2700	WIMUS	WOBAX	ZUDOL	4 NM Holding Pattern
↑	✧	2700	2700	2700
*LNAV only	*1.3 NM to RW31	313°	133°	GP 3.00°
1.3 NM	3.5 NM	6.3 NM	← 313°	TCH 55
CATEGORY	A	B	C	D
LPV DA	1364-½		250 (300-½)	
LNAV/VNAV DA	1428-½		314 (400-½)	
LNAV MDA	1580-½	466 (500-½)	1580-1	466 (500-1)
C CIRCLING	1580-1	461 (500-1)	1820-2 701 (800-2)	1980-2¾ 861 (900-2¾)

NC-1, 20 FEB 2025 to 20 MAR 2025

NC-1, 20 FEB 2025 to 20 MAR 2025