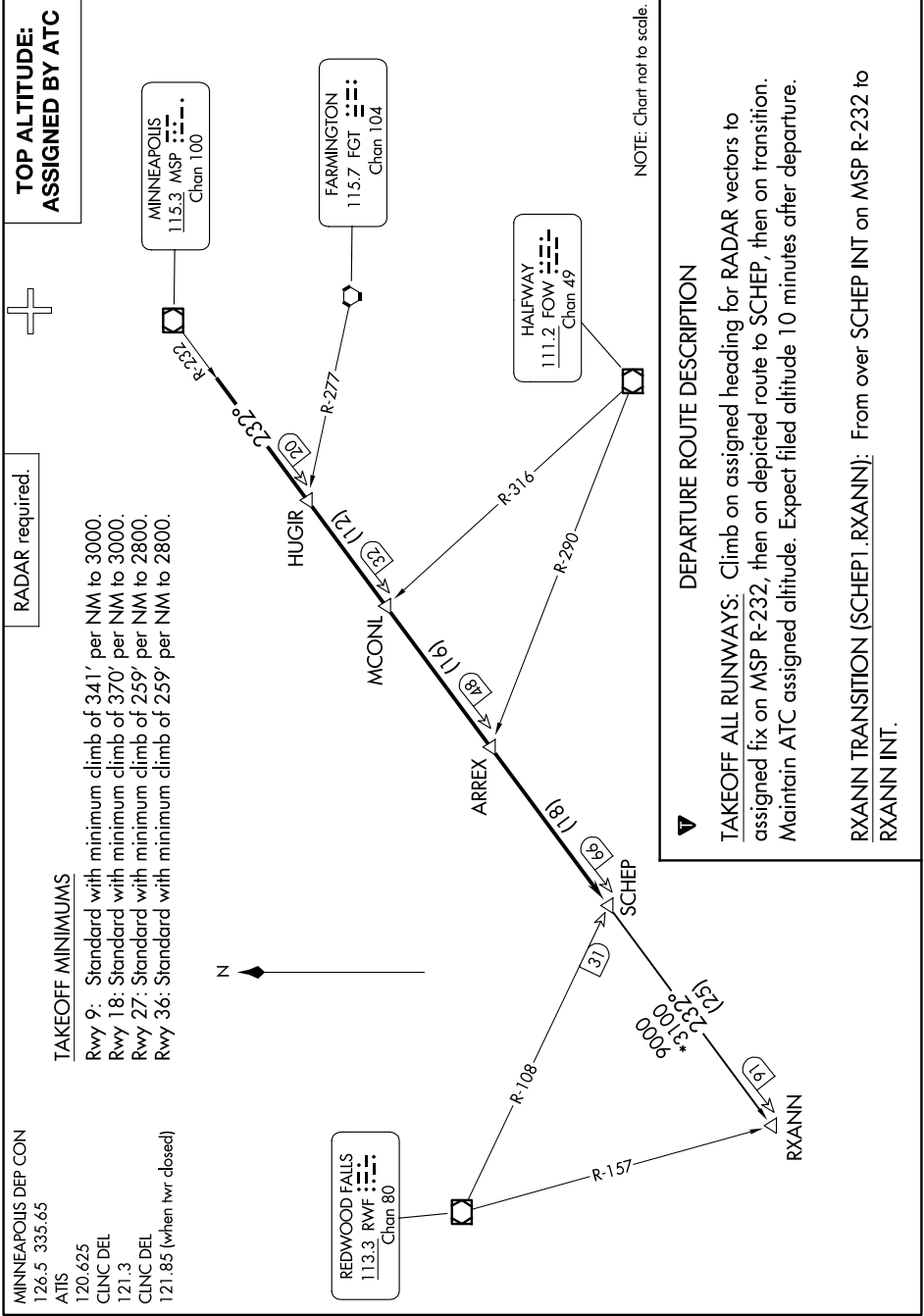


NC-1, 20 FEB 2025 to 20 MAR 2025



**MINNEAPOLIS DEP CON**  
126.5° 335.65  
**ATIS**  
120.625  
**CLNC DEL**  
121.3  
**CLNC DEL**  
121.85 (when invr closed)

**TAKEOFF MINIMUMS**  
Rwy 9: Standard with minimum climb of 341' per NM to 3000.  
Rwy 18: Standard with minimum climb of 370' per NM to 3000.  
Rwy 27: Standard with minimum climb of 259' per NM to 2800.  
Rwy 36: Standard with minimum climb of 259' per NM to 2800.

**RADAR required.**

**TOP ALTITUDE ASSIGNED BY ATC**

**DEPARTURE ROUTE DESCRIPTION**

**TAKEOFF ALL RUNWAYS:** Climb on assigned heading for RADAR vectors to assigned fix on MSP R-232, then on depicted route to SCHEP, then on transition. Maintain ATC assigned altitude. Expect filed altitude 10 minutes after departure.

**RXANN TRANSITION (SCHEP1.RXANNI):** From over SCHEP INT on MSP R-232 to RXANN INT.

NOTE: Chart not to scale.

NC-1, 20 FEB 2025 to 20 MAR 2025