

NC-1, 20 FEB 2025 to 20 MAR 2025

**DEPARTURE ROUTE DESCRIPTION**

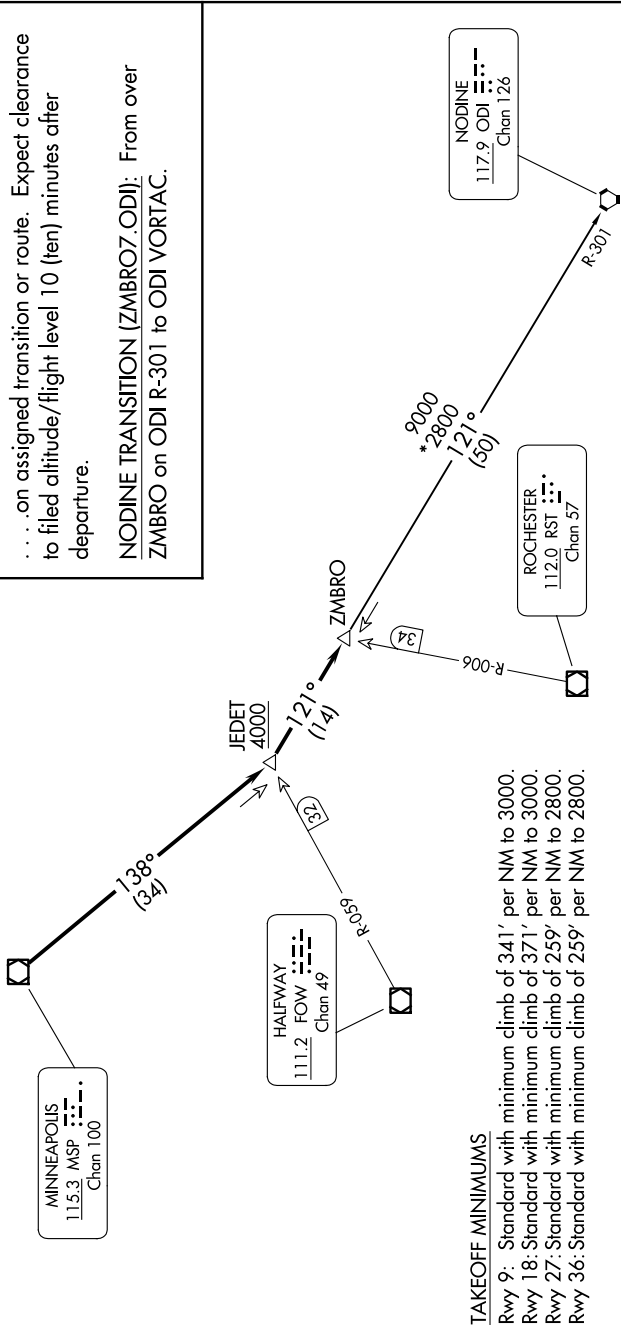
**TAKEOFF ALL RUNWAYS:** Fly assigned heading and altitude for RADAR vectors to MSP VOR/DME then on MSP R-138 to cross JEDET INT/MSP 34 DME, at or above 4000; then on ODI R-301 to ZMBRO INT/ODI 50 DME, thence . . . .

. . . . on assigned transition or route. Expect clearance to filed altitude/flight level 10 (ten) minutes after departure.

**NODINE TRANSITION (ZMBRO7.ODI):** From over ZMBRO on ODI R-301 to ODI VORTAC.

**TOP ALTITUDE:  
(JETS) 7000/  
(PROPS) 5000**

MINNEAPOLIS DEP CON  
126.5 335.65  
ATIS  
120.625  
CLNC DEL  
121.3  
CLNC DEL  
121.85 (when twr closed)  
ANOKA TOWER★  
132.4



**TAKEOFF MINIMUMS**

Rwy 9: Standard with minimum climb of 341' per NM to 3000.  
Rwy 18: Standard with minimum climb of 371' per NM to 3000.  
Rwy 27: Standard with minimum climb of 259' per NM to 2800.  
Rwy 36: Standard with minimum climb of 259' per NM to 2800.

**NOTE: RADAR required.**  
NOTE: Chart not to scale.

NC-1, 20 FEB 2025 to 20 MAR 2025