

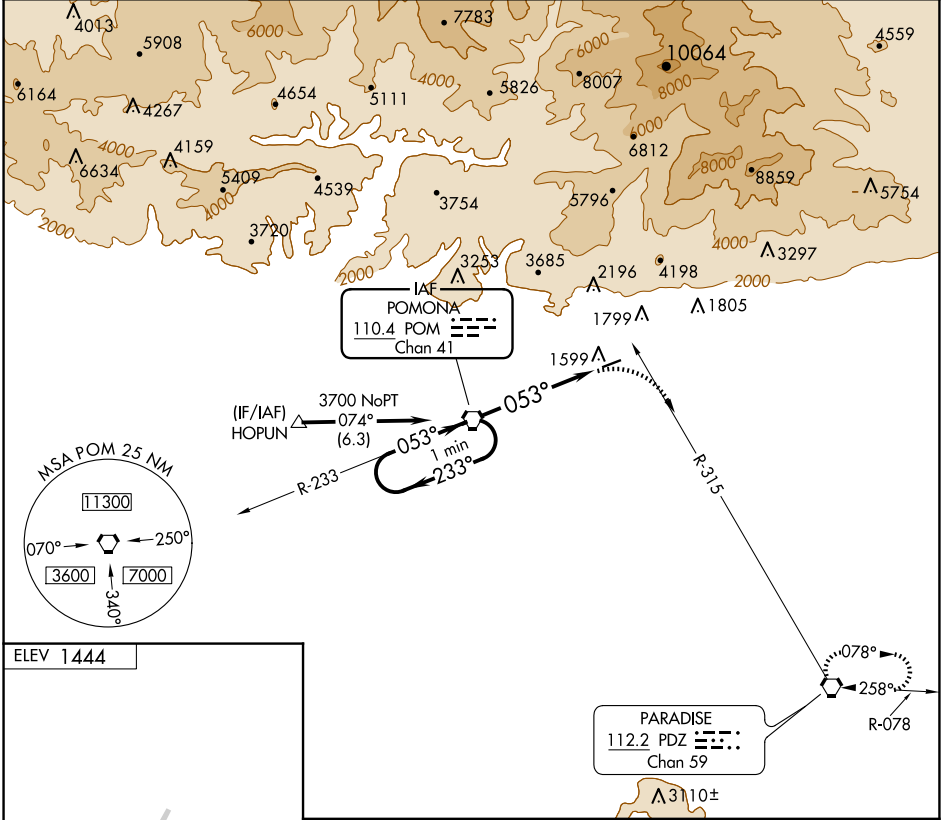
VORTAC POM 110.4 Chan 41	APP CRS 053°	Rwy Idg TDZE Apt Elev 1444	N/A N/A 1444
--	------------------------	--	---

VOR-A
CABLE (CCB)

NA Circling NA northwest of Rwy 6-24. Procedure NA at night. When local altimeter setting not received, use Ontario altimeter setting and increase all MDA 100 feet and all visibilities ½ SM. Rwy 24 helicopter visibility reduction below 1 SM NA.

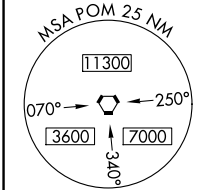
MISSED APPROACH: Climbing right turn to 4000 via heading 105° and PDZ R-315 to PDZ VORTAC and hold.

AWOS-3P 119.525	SOCAL APP CON 125.5 349.0	UNICOM 123.0 (CTAF) 0
---------------------------	-------------------------------------	---------------------------------

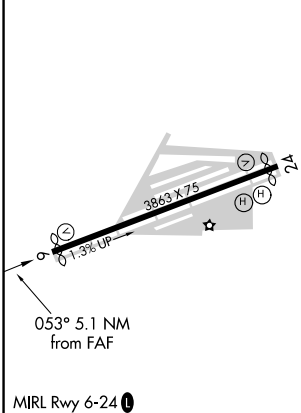


SW-3, 20 FEB 2025 to 20 MAR 2025

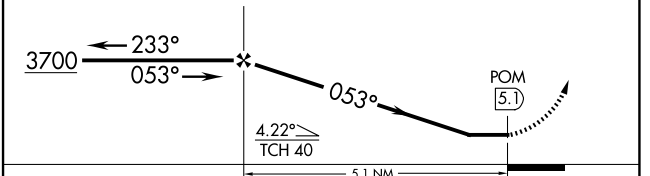
SW-3, 20 FEB 2025 to 20 MAR 2025



ELEV 1444



One Minute Holding Pattern	VGSI and descent angles not coincident (VGSI Angle 4.00/TCH 34).	4000	PDZ R-315	PDZ
----------------------------	--	------	-----------	-----



FAF to MAP 5.1 NM					
Knots	60	90	120	150	180
Min:Sec	5:06	3:24	2:33	2:02	1:42
CIRCLING	2240-1	796 (800-1)	2240-2¼ 796 (800-2¼)	NA	