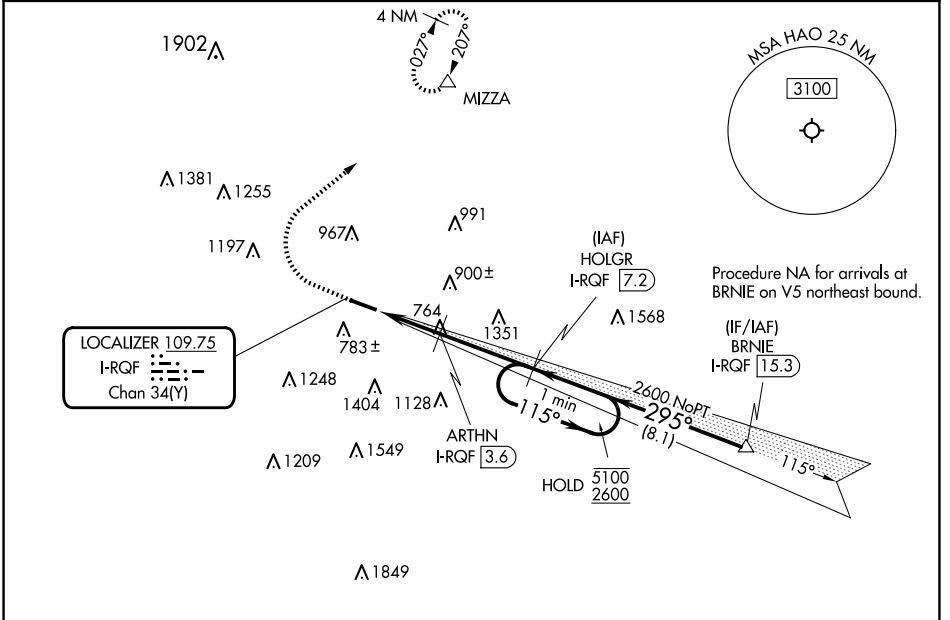


LOC/DME I-RQF 109.75 Chan 34 (Y)	APP CRS 295°	Rwy Idg TDZE Apt Elev	5500 619 632
--	------------------------	-----------------------------	---

ILS or LOC RWY 29

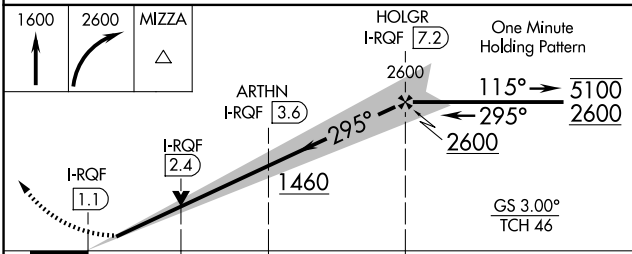
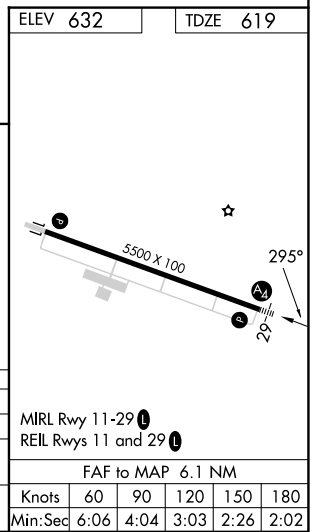
BUTLER COUNTY RGNL/HOGAN FLD (HAO)

RNP APCH - GPS DME required.		MALS	MISSED APPROACH: Climb to 1600 then climbing right turn to 2600 direct MIZZA and hold.
Inop table does not apply to S-ILS 29. 			
ASOS 121.425	CINCINNATI APP CON 121.0 254.25	CLNC DEL 126.25	UNICOM 123.05 (CTAF) 0



EC-2, 20 FEB 2025 to 20 MAR 2025

EC-2, 20 FEB 2025 to 20 MAR 2025



CATEGORY	A	B	C	D
S-ILS 29		819-3/4	200 (200-3/4)	
S-LOC 29	1080-3/4	461 (500-3/4)	1080-1/8	461 (500-1/8)
CIRCLING	1280-1	648 (700-1)	1300-1 3/4 668 (700-1 3/4)	1760-3 1128 (1200-3)