

(LINSE2.LINSE) 25051

AL-5212 (FAA)

MONTGOMERY COUNTY AIRPARK (GAI)

# LINSE TWO DEPARTURE (RNAV)

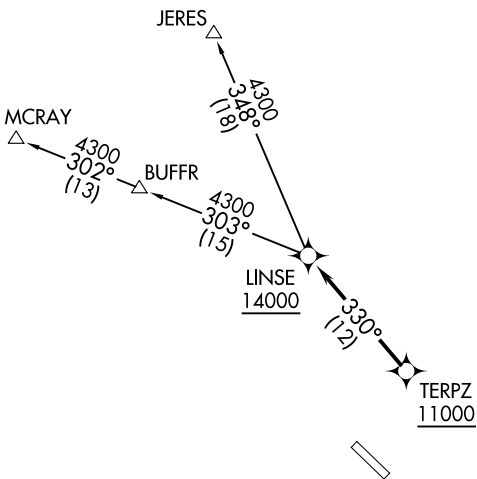
GAITHERSBURG, MARYLAND

POTOMAC DEP CON  
128.7 307.9  
AWOS-3PT  
128.275  
CLNC DEL  
121.6

RNAV 1 - DME/DME/IRU or GPS.

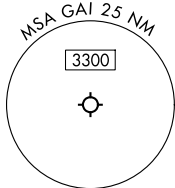
RADAR required.

**TOP ALTITUDE:  
16000**



NE-3, 20 FEB 2025 to 20 MAR 2025

NE-3, 20 FEB 2025 to 20 MAR 2025



NOTE: Jet aircraft only.

TAKEOFF MINIMUMS:  
Rwy 14, 32: Standard.

NOTE: Chart not to scale.



## DEPARTURE ROUTE DESCRIPTION

Climb on assigned heading for RADAR vectors to cross TERPZ at or above 11000, thence....

...then on track 330° to cross LINSE at or above 14000. Then on assigned transition. Maintain 16000, expect filed altitude 10 minutes after departure.

JERES TRANSITION (LINSE2.JERES)

MCRAY TRANSITION (LINSE2.MCRAY)

# LINSE TWO DEPARTURE (RNAV)

(LINSE2.LINSE) 20FEB25

GAITHERSBURG, MARYLAND  
MONTGOMERY COUNTY AIRPARK (GAI)