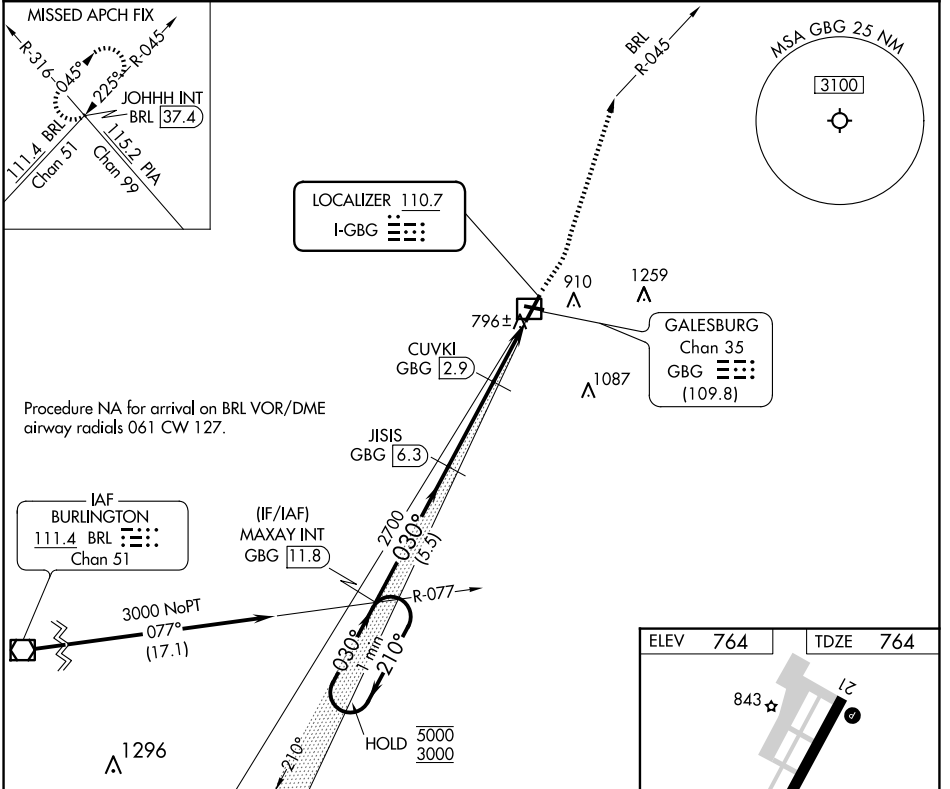


LOC I-GBG <b>110.7</b>	APP CRS <b>030°</b>	Rwy Idg TDZE Apt Elev	<b>5792</b> <b>764</b> <b>764</b>
---------------------------	------------------------	-----------------------------	---

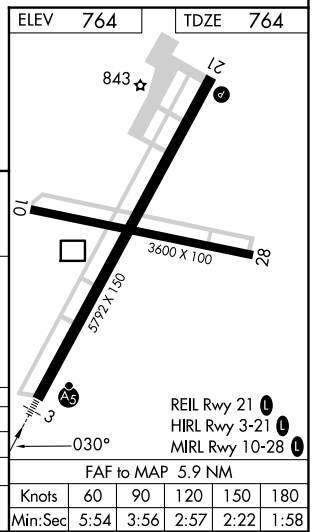
# ILS or LOC RWY 3

GALESBURG MUNI (GBG)

DME required. ▼ For inop ALS, increase S-LOC 3 Cat C/D visibility to ½ SM. ▲ NA DME from GBG DME. DME use requires simultaneous reception of I-GBG and GBG DME.		MALSR 	MISSED APPROACH: Climb to 1200 then climbing left turn to 3000 on heading 020° and BRL VOR/DME R-045 to JOHHH INT/ BRL 37.4 DME and hold.
AWOS-3 <b>118.975</b>	QUAD CITY APP CON ★ <b>133.275 257.8</b>	CLNC DEL <b>120.7</b>	UNICOM <b>123.0</b> (CTAF)



One Minute Holding Pattern	MAXAY INT GBG 11.8	1200	3000	BRL R-045	JOHHH INT
<b>5000</b> ← 210°	← 030° →	030°	2700	CUVKI GBG 2.9	GBG 1.2
<b>3000</b>			1600		
GS 3.00° TCH 55					
	5.5 NM	3.4 NM	1.7 NM	0.8 NM	
CATEGORY	A	B	C	D	
S-ILS 3		964-½	200 (200-½)		
S-LOC 3		1060-½	296 (300-½)		
CIRCLING	1220-1	456 (500-1)	1380-1¾ 616 (700-1¾)	1620-2¾ 856 (900-2¾)	



EC-3, 20 FEB 2025 to 20 MAR 2025

EC-3, 20 FEB 2025 to 20 MAR 2025

FAF to MAP 5.9 NM					
Knots	60	90	120	150	180
Min:Sec	5:54	3:56	2:57	2:22	1:58